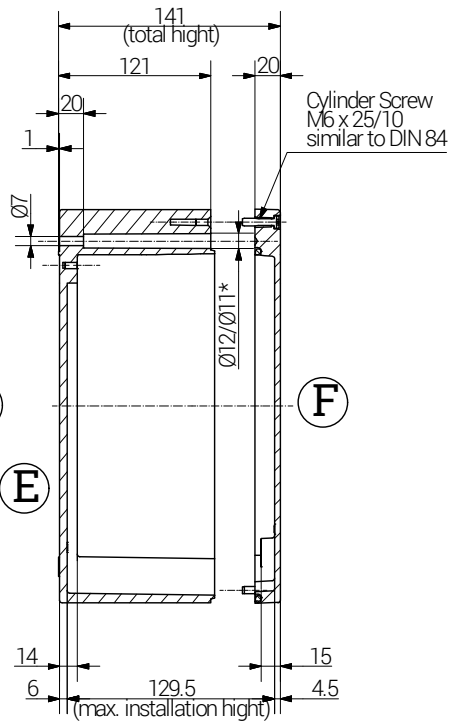
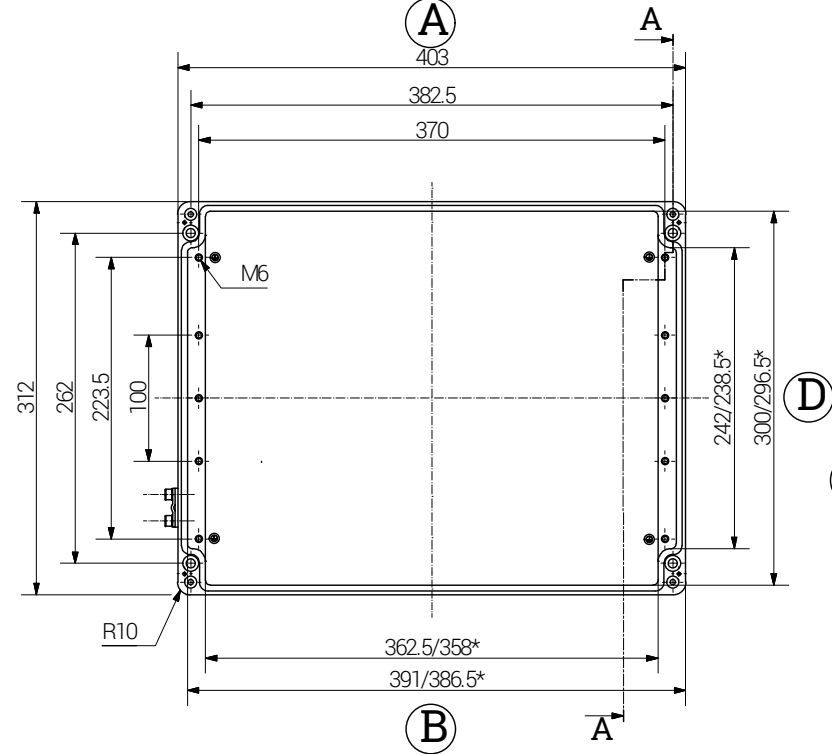
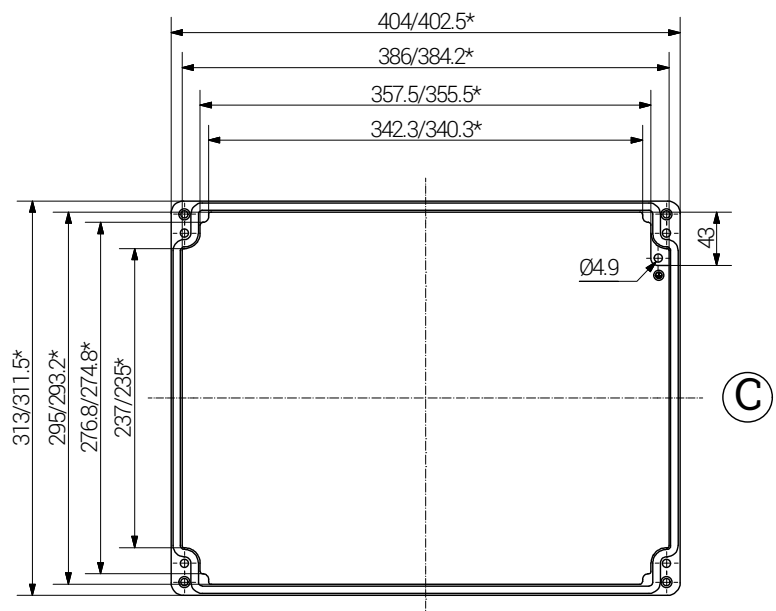


| Article | | Length (mm) | Width (mm) | Height (mm) | DIN Rail for terminals | | PE busbar | PE angle brackets | Mounting Plate galv. sheet steel Thickness in mm | External Mounting Brackets | External Hinge | Internal Hinges |
|---------------|---------------|----------------|---------------|----------------|------------------------|-------|-----------|-------------------|--|----------------------------|----------------|-----------------|
| Ex e | Ex ia | | | | Aluminium set | pair | | | | pair | | |
| 15 403114 000 | 16 403114 000 | 400 | 310 | 140 | TS 15 | TS 35 | 2 | - | 2.0 | x | x | x |

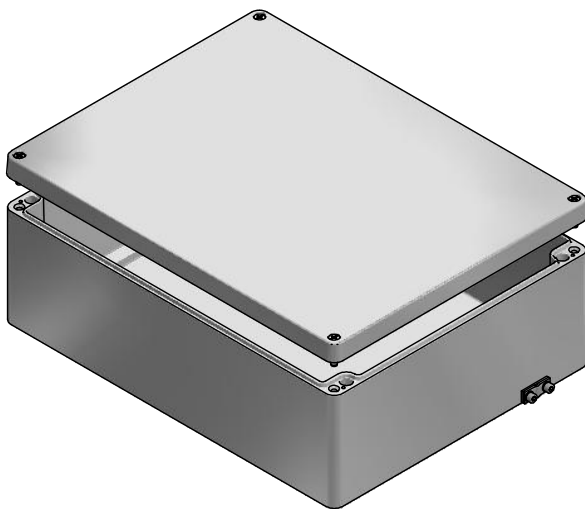
lid

base

Section A-A



*= Dimension reduced at bottom due to conical form
Tolerances to GTA 13/5 - DIN 1688.



| | | | | | | | | | | |
|-----------|--------------|--|------------|--|--|--------------|--------|--|----|--|
| | | RST Rabe-System-Technik und Vertriebs-GmbH Otto-Lilienthal-Strasse 19 49134 Wallenhorst ☎ +49 5407 8766-0 📠 +49 5407 8766-99 📧 info@rst.eu | | | Unless otherwise specified on the drawing: Metric Thread = EN 60423 PG Thread = DIN 40430 NPT Thread = ANSI B1.20.1 Tolerance: DIN ISO 2768-m All dimensions in mm. | | | Abusively use, in particular reproduction and dissemination to third parties is not permitted. You can be punished by civil law. Technical changes are reserved. | | |
| | | Draw. | 12.06.2018 | SL | Date | Name | | <h1>Enclosure</h1> <h2>400 x 310 x 140 mm</h2> | | |
| Appr. | 12.06.2018 | KH | Date | | Name | | | | | |
| Norm | | | Scale: | | | 1:6 | | | | |
| Material: | | | Aluminium | | | Drawing-Nr.: | | | | |
| Status | Modification | Date | Name | Z:\Inventor\Gehäuse\Ex-Gehäuse\Aluminium\15403114000\Alu-Ex-Gehäuse-34-BG-0001-15_403114_000.idw | | | 1 of 1 | | A4 | |
| | | | | | | | | V5 | | |

Please note that the above representation is just a dimension illustration.