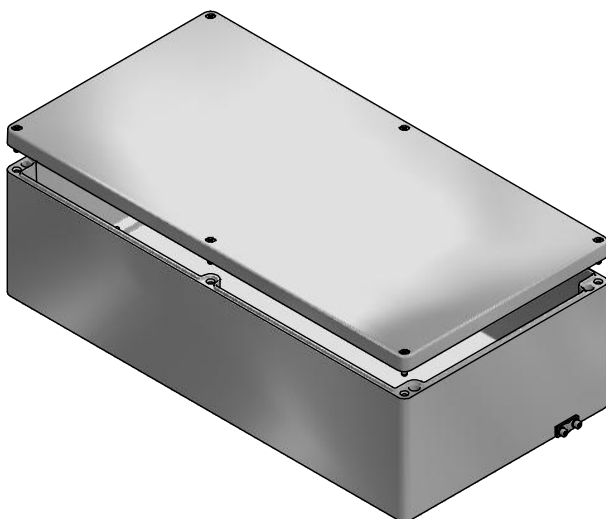
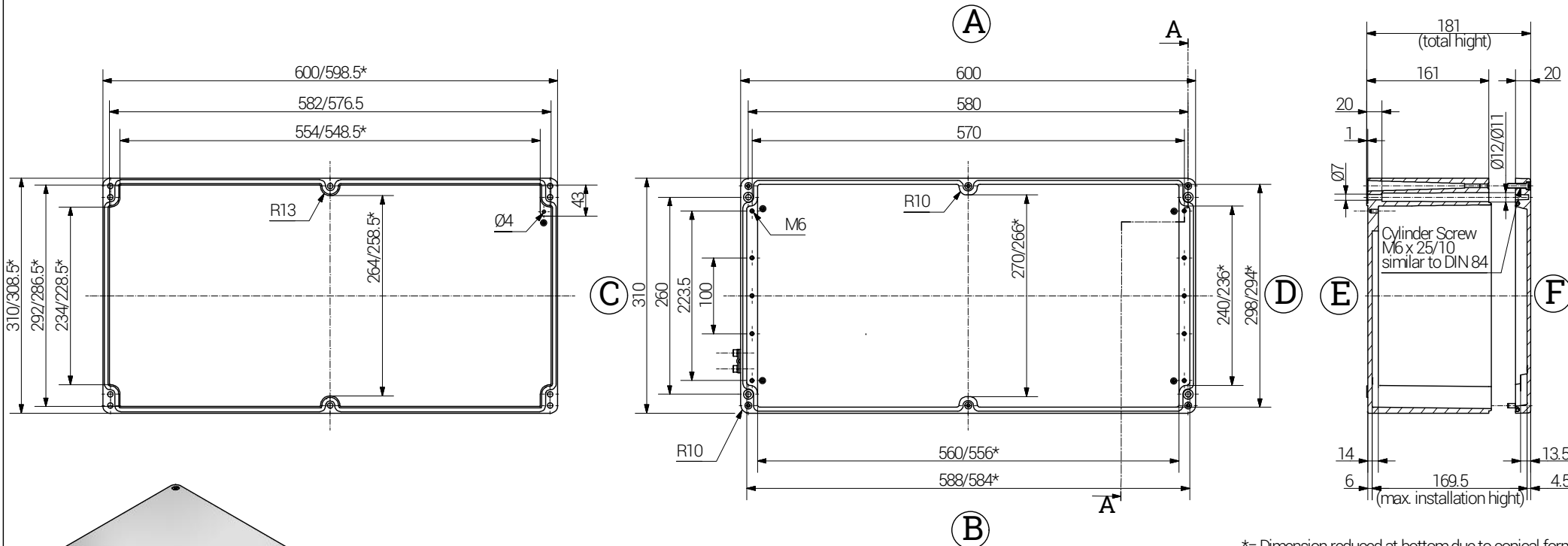


| Article | | Length (mm) | Width (mm) | Height (mm) | DIN Rail for terminals | | PE busbar | PE angle brackets | Mounting Plate galv. Sheet steel Thickness in mm | External Mounting Brackets | External Hinge | Internal Hinges |
|---------------|---------------|----------------|---------------|----------------|------------------------------|-------|-----------|-------------------------|---|----------------------------------|-------------------|--------------------|
| Ex e | Ex ia | | | | TS 15 | TS 35 | | | | | | |
| 15 603118 000 | 16 603118 000 | 600 | 310 | 180 | x | x | 2 | - | 2.5 | Aluminium set | pair | pair |


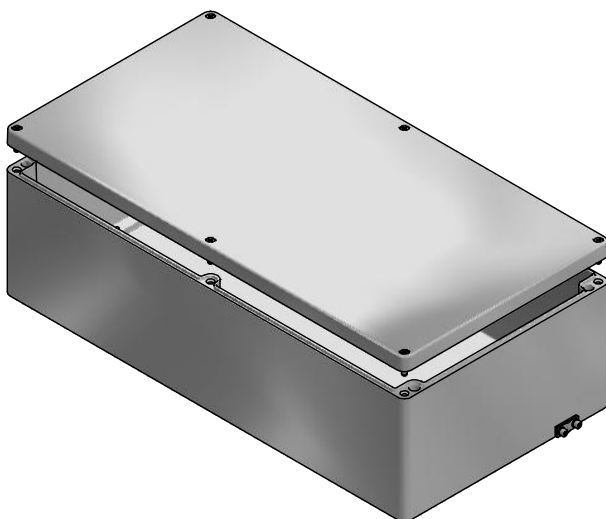
lid

base

Section A-A



*= Dimension reduced at bottom due to conical form
Tolerances to GTA 13/5 - DIN 1688.

| | | | | | | | | | | |
|--|--------------|--|------|--|--|---|----|--|------------------------|--|
|  | | RST Rabe-System-Technik und Vertriebs-GmbH Otto-Lilienthal-Strasse 19 49134 Wallenhorst ☎ +49 5407 8766-0 ☎ +49 5407 8766-99 ✉ info@rst.eu | | | Unless otherwise specified on the drawing: Metric Thread = EN 60423 PG Thread = DIN 40430 NPT Thread = ANSI B1.20.1 Tolerance: DIN ISO 2768-m All dimensions in mm. | | | Abusively use, in particular reproduction and dissemination to third parties is not permitted. You can be punished by civil law. Technical changes are reserved. | | |
| | |  | | Date: 12.06.2018 Name: SL | | <h2 style="text-align: center;">Enclosure 600 x 310 x 180 mm</h2> | | | Drawing-Nr.: see table | |
| Draw. 12.06.2018 Appr. 12.06.2018 Norm: Scale: 1:7,5 Material: Aluminium | | Date: 12.06.2018 Name: KH | | A4 | | | | | | |
| Status | Modification | Date | Name | Z:\Inventor\Gehäuse\Ex-Gehäuse\Aluminium\15603118000\Alu-Ex-Gehäuse-38-BG-0001-15_603118_000.idw | | | V6 | | | |

Please note that the above representation is just a dimension illustration.