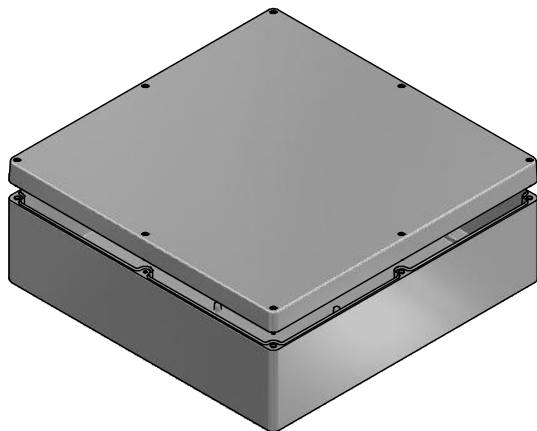
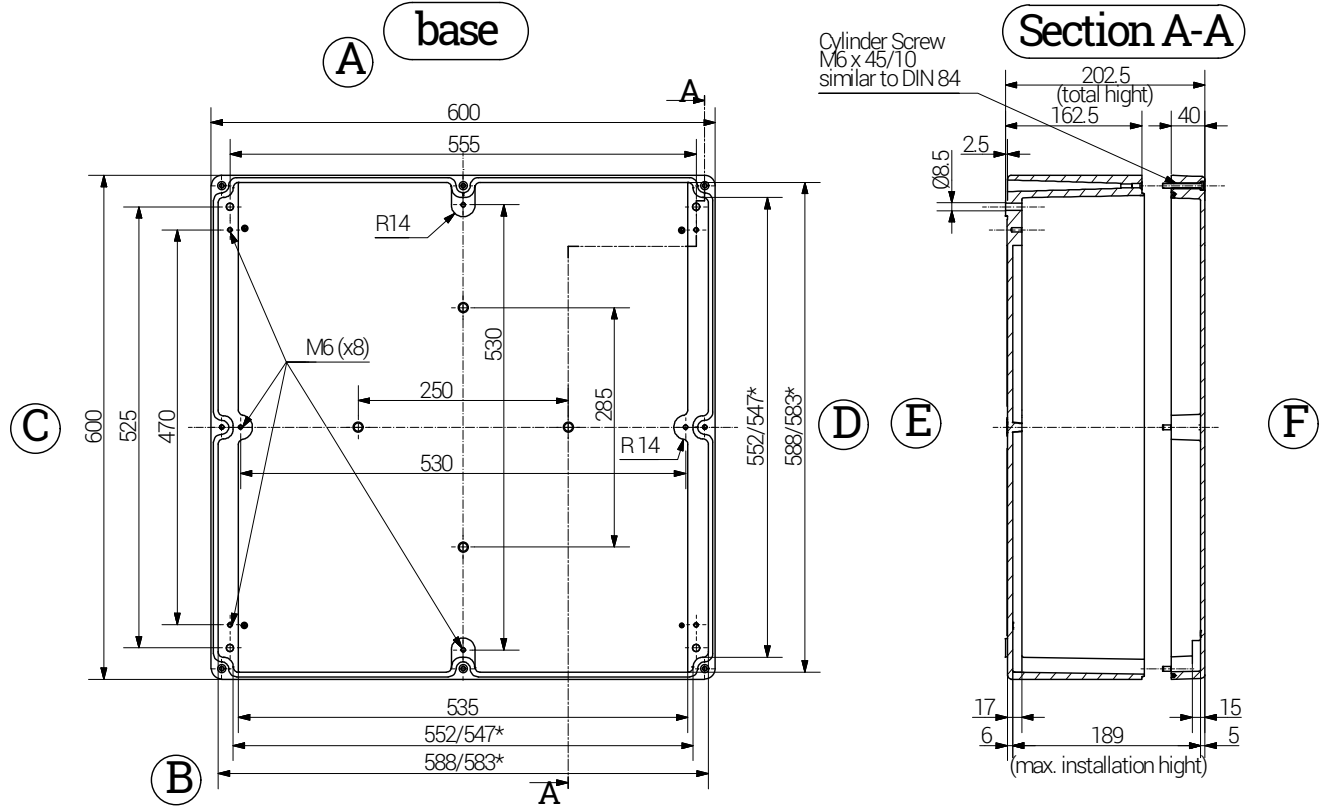
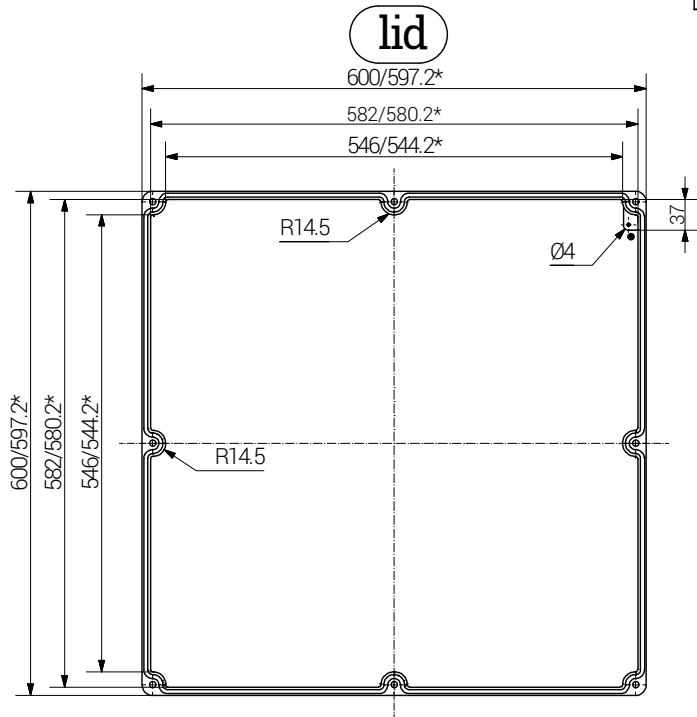


*= Dimension reduced at bottom due to conical form.
Tolerances to GTA 13/5 - DIN 1688.

Article	Length (mm)	Width (mm)	Height (mm)	DIN Rail		Earthing Rail, number of clamping pieces	Mounting Plate galv. Sheet steel Thickness in mm	External Mounting Brackets in set	External Hinge in Aluminium PC pair	Internal Hinges PC pair
				TS 15	TS 35					
09 606020 000	600	600	200	x	x	-	2.5	-	-	-



Weight: 25940 g



RST Rabe-System-Technik und Vertriebs-GmbH
Otto-Lilienthal-Strasse 19
49134 Wallenhorst
☎ +49 5407 8766-0
☎ +49 5407 8766-99
✉ info@rst.eu

Unless otherwise specified on the drawing:
Metric Thread = EN 60423
PG Thread = DIN 40430
NPT Thread = ANSI B1.20.1
Tolerance: DIN ISO 2768-m
All dimensions in mm.

Abusively use, in particular reproduction and dissemination to third parties is not permitted. You can be punished by civil law. Technical changes are reserved.

		Date	Name		
	Draw.	31.05.2018	SL		
	Appr.	31.05.2018	KH		
	Norm				
	Scale:		1:9		
	Material:	Aluminium		Drawing-Nr.:	09 606020 000
Status	Modification	Date	Name	Z:\Inventor\Gehäuse\Gehäuse-Aluminium\09606020000\Alu-Gehäuse-42-BG-0001-09_606020_000.idw	1 of 1
					A4
					V9

Enclosure
600 x 600 x 200 mm

Please note that the above representation is just a dimension illustration.