

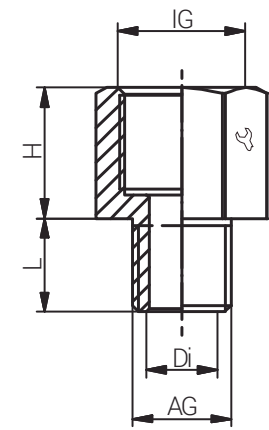
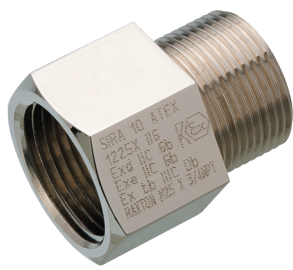
| Artikelnummer RST Article Code RST | Herstellernummer Manufacturer Code | Gewinde Entry Thread | | | Di (mm) | L (mm) | H (mm) | VPE* PU* |
|---------------------------------------|---------------------------------------|-------------------------|-------------|----|------------|-----------|-----------|-------------|
| | | AG / Male | IG / Female | | | | | |
| RX740989 | ABE4314Y | NPT 3/4" | M32x1.5 | 38 | 19.2 | 20.5 | 21.0 | 1 |

| | |
|-----------------------------------|-------------------------------------------------------|
| Material | Edelstahl 1.4404 |
| Schutzart gem. IEC 60529 | IP66/IP68 |
| ATEX-Kenzeichnung | Ex II2 GD / Ex d IIC Gb / Ex e IIC GB / Ex tb IIIC Db |
| | Ex I M2 / Ex d I Mb / Ex e I Mb |
| Empfohlenes Anzugsdrehmoment | Stutzen siehe Montageanleitung |
| CE-Kennzeichnung | ja (Richtlinie 2014/34/EU) |
| Zolltarif-Nummer | 73269098 |
| Gewicht | 0.127 kg |
| EAN-Nummer | 5056039015411 |
| RoHS (2015/863/EU) | konform |
| REACH/SVHC (Art. 33 1907/2006) | keine SVHC-Stoffe enthalten |
| Konfliktminerale (Dodd-Frank Act) | keine Konfliktminerale enthalten |

| | |
|-----------------------------------|-------------------------------------------------------|
| Material | Stainless Steel 316L |
| Protection Class rel. IEC 60529 | IP66/IP68 |
| ATEX Marking | Ex II2 GD / Ex d IIC Gb / Ex e IIC GB / Ex tb IIIC Db |
| | Ex I M2 / Ex d I Mb / Ex e I Mb |
| Recommended Tightening Torque | Body see assembly instruction |
| CE Marking | yes (Directive 2014/34/EU) |
| Customs Tariff Number | 73269098 |
| Weight | 0.127 kg |
| EAN Code | 5056039015411 |
| RoHS (2015/863/EU) | compliant |
| REACH/SVHC (Art. 33 1907/2006) | contain no SVHC substances |
| Konfliktminerale (Dodd-Frank Act) | contain no conflict minerals |

Für besondere Bedingungen oder Einschränkungen siehe entsprechende Produktdokumentation.

For specific conditions or limitations please see relevant product documentation.



Zubehör
Accessories
ERWEITERUNG
NPT x M
ENLARGER
NPT x M

Produktdokumentation
Product Documentation



* Mindestbestellmenge (MOQ) kann größer sein als Verpackungseinheit (VPE).
* Minimum order quantity (MOQ) can be larger than packaging unit (PU).

RST Rabe-System-Technik und Vertriebs-GmbH
Otto-Lilienthal-Strasse 19
49134 Wallenhorst

DEUTSCHLAND
+49 5407 8766-0
+49 5407 8766-99
info@rst.eu
www.rst.eu