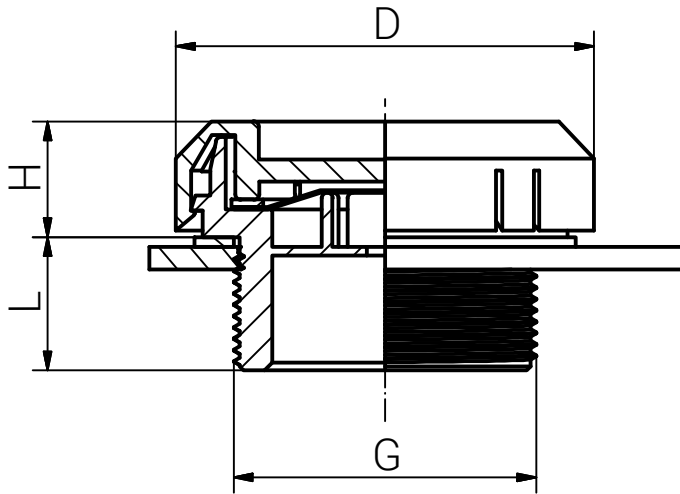
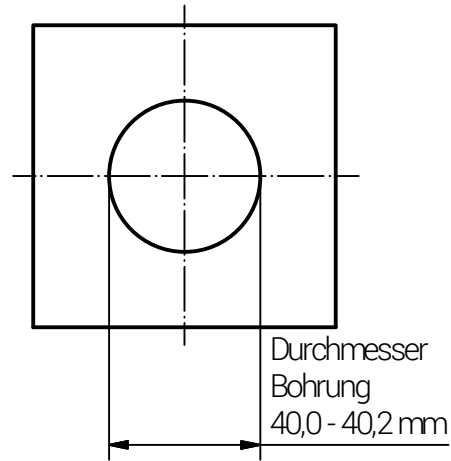
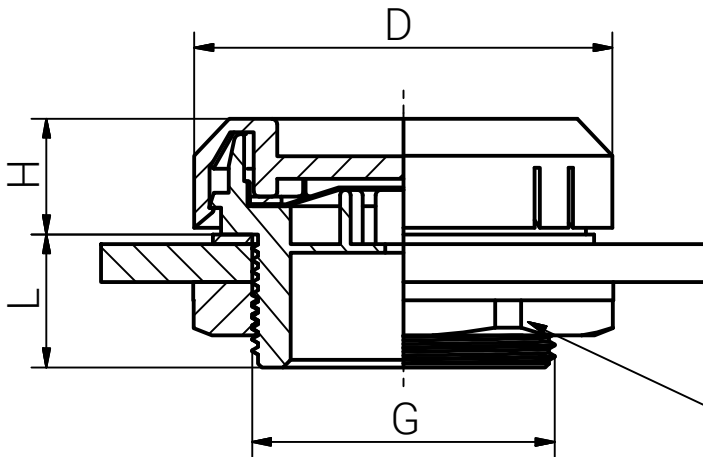


# Montageanleitung

Gewindebohrung  
mit Flachdichtung



Durchgangsbohrung  
mit Flachdichtung



Gegenmutter

Schritt	Montageschritt
1	Druckausgleichselement mit dem Anschlussgewinde am Gegenstück (z.B. Elektronikgehäuse) montieren und so weit anziehen, dass die Flachdichtung ihre Funktion erfüllt. Zu festes Anziehen kann zu Beschädigungen führen.

Das Druckausgleichselement sollte seitlich montiert werden.

Artikel	Membrantyp	Gewinde	D	L	H	Anzugsdrehmoment (Nm) ADM	
RAL7035	RAL9005	G	(mm)	(mm)	(mm)	Toleranz ±0,5	
11087540	13087540	H	M40x1,5	55,3	18,0	15,5	5,0



RST Rabe-System-Technik und Vertriebs-GmbH  
Otto-Lilienthal-Strasse 19  
49134 Wallenhorst  
☎ +49 5407 8766-0  
☎ +49 5407 8766-99  
✉ info@rst.eu

Unless otherwise specified on the drawing:  
Metric Thread = EN 60423  
PG Thread = DIN 40430  
NPT Thread = ANSI B1.20.1  
Tolerance: DIN ISO 2768-m  
All dimensions in mm

Abusive use, in particular reproduction and dissemination to third parties is not permitted. You can be punished by civil law. Technical changes are reserved.

				Date	Name
				13.05.2020	SL
				13.05.2020	KH
					1:1/1:2
					Scale:
					Material:
B	Material	22.05.2023	SL		Polyamid 6
A	Text	10.11.2020	SL		
Status	Modification	Date	Name	Z:\Inventor\Montageanleitung\Druckausgleichselemente\DAE_Kunststoff_ML1x087540\DAE-01-1-BG-0001-1x087540_SZM_TD_German.idw	

Druckausgleichselement  
Kunststoff M40x1,5

Drawing-Nr.:  
1x087540\_SZM\_TD\_German

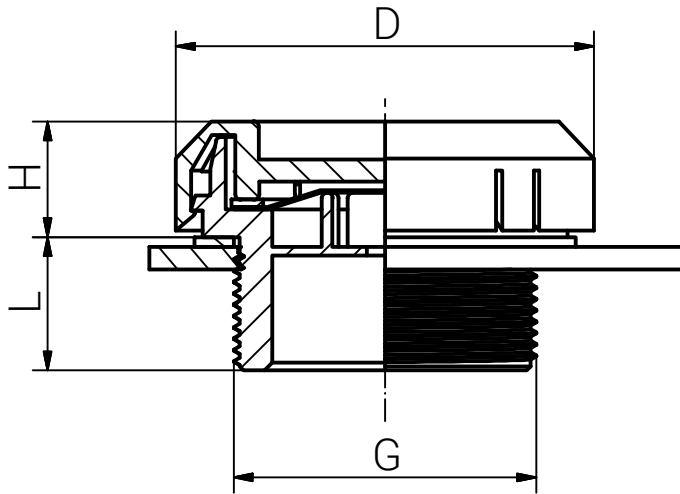
1 of 1

A4

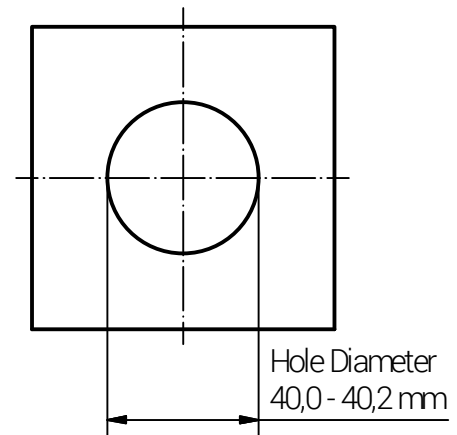
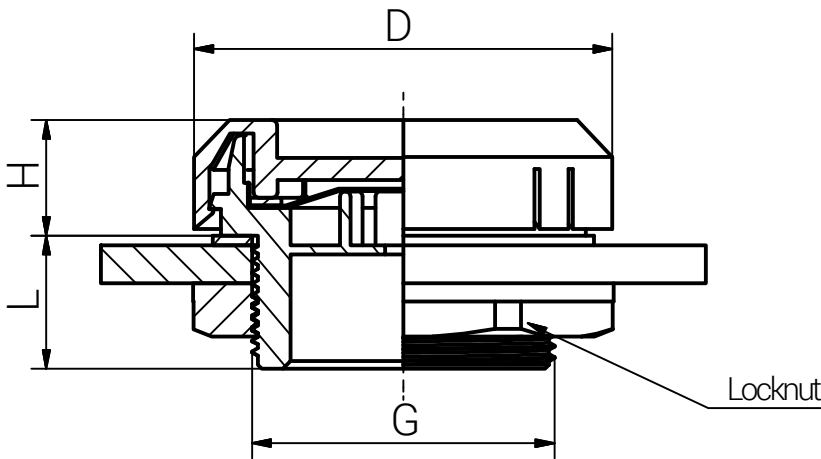
V25

# Mounting Instruction

## Threaded Enclosure Flat Washer Application



## Non Threaded Enclosure Flat Washer Application



Step	Assembly Steps
1	Mount the pressure balance element with the connection thread on the counterpart (e.g. electronic enclosure) and tighten until the washer fulfills its function. Over tightening may cause damage.

The pressure equalization element should be mounted laterally.

Article		Type of membrane	Thread	D	L	H	Tighting Torque (Nm) TT
RAL7035	RAL9005		G	(mm)	(mm)	(mm)	Tolerances ±0,5
11087540	13087540	H	M40x1,5	55,3	18,0	15,5	5,0



RST Rabe-System-Technik und Vertriebs-GmbH  
Otto-Lilienthal-Strasse 19  
49134 Wallenhorst  
☎ +49 5407 8766-0  
☎ +49 5407 8766-99  
✉ info@rst.eu

Unless otherwise specified on the drawing:  
Metric Thread = EN 60423  
PG Thread = DIN 40430  
NPT Thread = ANSI B1.20.1  
Tolerance: DIN ISO 2768-m  
All dimensions in mm

Abusively use, in particular reproduction and dissemination to third parties is not permitted. You can be punished by civil law. Technical changes are reserved.

		Date	Name
	Draw.	13.05.2020	SL
	Appr.	13.05.2020	KH
	Norm		1:1/1:2
	Scale:		
	Material:	Polyamide 6	
B	Material	22.05.2023	SL
A	Text	10.11.2020	SL
Status	Modification	Date	Name

## Pressure Balance Elements Plastic M40x1,5

Drawing-Nr.:  
**1x087540\_SZM\_TD\_Englisch**

**1** of 1

A4

V12