



GEGENMUTTER / M / PG / NPT / LOCKNUT / M / PG / NPT

Material	Messing, vernickelt
Hinweis	Gegenmutter zur Befestigung von Bauteilen mit Aussengewinde, sofern keine Gewindebohrung vorhanden ist.

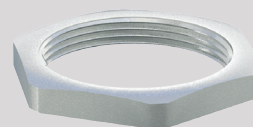
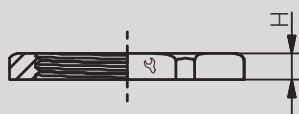
Material	Nickel Plated Brass
Note	Locknut for fixing components with male thread in case of no entry thread existing.

Zulassungen / Approvals



Artikel Article	Gewinde Thread		H (mm)	VPE PU
61006512	M12x1.5	15	2.80	100
61006516	M16x1.5	19	2.80	100
61006520	M20x1.5	24	3.00	100
61006525	M25x1.5	30	3.50	100
61006532	M32x1.5	36	4.00	100
61006540	M40x1.5	46	5.00	50
61006550	M50x1.5	57	5.00	25
61006563	M63x1.5	70	6.00	25
61006575	M75x1.5	80	7.00	5
61006575P200	M75x2.0	80	7.00	5
61006580	M80x2.0	90	8.00	5
61006585	M85x2.0	95	8.00	5
61006590	M90x2.0	100	8.00	5
61006407	PG 7	15	2.80	100
61006409	PG 9	18	2.80	100
61006411	PG 11	21	3.00	100
61006413	PG 13.5	23	3.00	100
61006416	PG 16	26	3.00	100
61006421	PG 21	32	3.50	100
61006429	PG 29	41	4.00	50
61006436	PG 36	51	5.00	50
61006442	PG 42	60	5.00	25
61006448	PG 48	64	5.50	10
00280104	NPT 1/4"	18	3.0	1
00280114	NPT 3/8"	22	3.5	1
00280124	NPT 1/2"	28	3.75	1
00280134	NPT 3/4"	33	4.0	1
00280144	NPT 1"	40	4.75	1
00280154	NPT 1 1/4"	50	5.25	1
00280164	NPT 1 1/2"	56	5.75	1
00280174	NPT 2"	70	6.25	1
00280184	NPT 2 1/2"	90	9.0	1
00280194	NPT 3"	105	10.0	1
00280204	NPT 3 1/2"	120	12.0	1
00280214	NPT 4"	135	14.0	1

Weitere Gewindegrößen und -typen auf Anfrage. / Additional threadsizes and -types on request.





Material Edlstahl 1.4305/1.4404

Hinweis Gegenmutter zur Befestigung von Bauteilen mit Aussengewinde, sofern keine Gewindebohrung vorhanden ist.

Material Stainless Steel 303/316L

Note Locknut for fixing components with male thread in case of no entry thread existing.

Zulassungen / Approvals

Artikel Article		Gewinde Thread			H (mm)		VPE PU	
1.4305 / 303	1.4404 / 316L		1.4305 / 303	1.4404 / 316L	1.4305 / 303	1.4404 / 316L	1.4305 / 303	1.4404 / 316L
-	00221099	M10x1,0	-	15,8	-	3,20	-	lose / loose
91006512	00221299	M12x1,5	15	17	2,80	3,20	10	lose / loose
91006516	00221699	M16x1,5	19	19	3,00	3,20	10	lose / loose
91006520	00222099	M20x1,5	24	25,4	3,50	3,50	10	lose / loose
91006525	00222599	M25x1,5	30	30	4,00	4,00	10	lose / loose
91006532	00223299	M32x1,5	36	36	5,00	4,50	5	lose / loose
91006540	00224099	M40x1,5	46	46	5,00	4,80	5	lose / loose
91006550	00225099	M50x1,5	55	54	5,00	4,70	2	lose / loose
91006563	00226399	M63x1,5	70	80	6,00	6,40	lose / loose	lose / loose
91006575	00227599	M75x1,5	80	95	7,00	6,40	5	lose / loose
91006575P200	-	M75x2,0	80	-	7,00	-	5	-
91006580	00228099	M80x2,0	90	100	8,00	8,50	5	lose / loose
91006585	-	M85x2,0	95	-	8,00	-	lose / loose	-
91006590	00229099	M90x2,0	100	110	8,00	8,50	5	lose / loose
91006407	-	PG 7	17	-	2,80	-	50	-
91006409	-	PG 9	19	-	2,80	-	50	-
91006411	-	PG 11	22	-	3,00	-	50	-
91006413	-	PG 13,5	24	-	3,00	-	50	-
91006416	-	PG 16	27	-	3,00	-	50	-
91006421	-	PG 21	32	-	3,50	-	25	-
91006429	-	PG 29	41	-	4,00	-	25	-
91006436	-	PG 36	60	-	5,00	-	50	-
91006442	-	PG 42	60	-	5,00	-	25	-
91006448	-	PG 48	65	-	5,50	-	10	-
-	00280119	NPT 3/8"	-	22	-	3,50	-	lose / loose
-	00280129	NPT 1/2"	-	28	-	3,75	-	lose / loose
-	00280139	NPT 3/4"	-	33	-	4,00	-	lose / loose
-	00280149	NPT 1"	-	41	-	4,75	-	lose / loose
-	00280159	NPT 1 1/4"	-	50	-	5,25	-	lose / loose
-	00280169	NPT 1 1/2"	-	56	-	5,75	-	lose / loose
-	00280179	NPT 2"	-	70	-	6,25	-	lose / loose
-	00280189	NPT 2 1/2"	-	90	-	9,00	-	lose / loose
-	00280199	NPT 3"	-	105	-	10,00	-	lose / loose
-	00280209	NPT 3 1/2"	-	120	-	12,00	-	lose / loose
-	00280219	NPT 4"	-	135	-	14,00	-	lose / loose

Weitere Gewindegrößen und -typen auf Anfrage. / Additional threadsizes and -types on request.

