



# ERWEITERUNGEN UND REDUZIERUNGEN / M x M ENLARGER AND REDUCER / M x M

Material	Messing, blank; Messing, vern.; Edelstahl 1.4404 (Weitere auf Anfrage)
Schutzart	IP66 / IP68
ATEX-Kennzeichnung	Ex II2 GD / Ex d IIC Gb / Ex e IIC GB Ex tb IIIC Db Ex I M2 / Ex d I Mb / Ex e I Mb
Hinweis	Ex e/d-Adapter, um Gewindeeingänge an Ge- häusen und Maschinen zu vergrößern bzw. zu verkleinern.

Material	Natural Brass; Nickel Plated Brass; Stainless Steel 316L (Further on Request)
Protection Class	IP66 / IP68
ATEX Marking	Ex II2 GD / Ex d IIC Gb / Ex e IIC GB Ex tb IIIC Db Ex I M2 / Ex d I Mb / Ex e I Mb
Note	Ex e/d adapter to enlarge or to reduce entry threads on enclosures and machines.

Für besondere Bedingungen oder Einschränkungen siehe entsprechende Produktdokumentation.

For specific conditions or limitations please see relevant product documentation.

## Zulassungen / Approvals

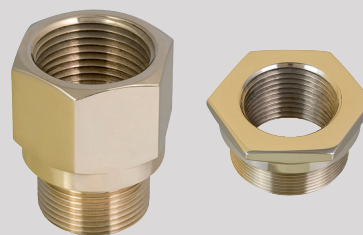
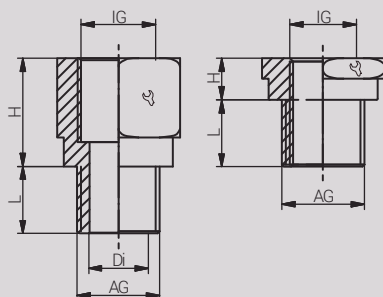
\* abweichende Artikelnummer / variant article number



ITS16ATEX101336X IECEXITS16.0011X EA9C RU C-GB.MIO62.B.00447 1003277 NCC.18.0133X GYJ18.1471X 2020.32231.3001350

Artikel- Nummer RST Article Code RST	Hersteller- Nummer Manufacturer Code	Artikel- Nummer RST Article Code RST	Hersteller- Nummer Manufacturer Code	Hersteller Manufacturer	Gewinde Entry Thread			Di (mm)	L (mm)	H (mm)	VPE PU
					AG / Male	IG / Female					
RX745834	BBA1104YXN	RX745839	BBE1104Y		M16x1.5	M12x1.5	19.0	-	15.0	3.5	1
RX740274	ABA1112YXN	RX740279	ABE1112Y		M16x1.5	M20x1.5	24.0	10.4	15.0	21.0	1
RX745844	BBA1204YXN	RX745849	BBE1204Y		M20x1.5	M12x1.5	24.0	-	15.0	4.0	1
RX740024	BBA1211YXN	RX740029	BBE1211Y		M20x1.5	M16x1.5	24.0	-	15.0	4.0	1
RX740544	ABA1213YXN	RX740549	ABE1213Y		M20x1.5	M25x1.5	30.5	14.4	15.0	21.0	1
RX740034	BBA1311YXN	RX740039	BBE1311Y		M25x1.5	M16x1.5	28.0	-	15.0	4.0	1
RX740294	BBA1312YXN	RX740299	BBE1312Y		M25x1.5	M20x1.5	28.0	-	15.0	4.0	1
RX740814	ABA1314YXN	RX740819	ABE1314Y		M25x1.5	M32x1.5	37.5	19.4	15.0	22.0	1
RX740304	BBA1412YXN	RX740309	BBE1412Y		M32x1.5	M20x1.5	37.5	-	15.0	4.0	1
RX740564	BBA1413YXN	RX740569	BBE1413Y		M32x1.5	M25x1.5	37.5	-	15.0	4.0	1
RX741084	ABA1415YXN	RX741089	ABE1415Y		M32x1.5	M40x1.5	47.0	26.8	15.0	22.0	1
RX740574	BBA1513YXN	RX740579	BBE1513Y		M40x1.5	M25x1.5	47.0	-	15.0	5.0	1
RX740834	BBA1514YXN	RX740839	BBE1514Y		M40x1.5	M32x1.5	47.0	-	15.0	5.0	1
RX741354	ABA1516YXN	RX741359	ABE1516Y		M40x1.5	M50x1.5	56.0	33.5	15.0	22.0	1
RX740844	BBA1614YXN	RX740849	BBE1614Y		M50x1.5	M32x1.5	56.0	-	15.0	5.5	1
RX741104	BBA1615YXN	RX741109	BBE1615Y		M50x1.5	M40x1.5	56.0	-	15.0	5.5	1
RX741624	ABA1617YXN	RX741629	ABE1617Y		M50x1.5	M63x1.5	70.0	42.8	15.0	22.0	1
RX741114	BBA1715YXN	RX741119	BBE1715Y		M63x1.5	M40x1.5	70.0	-	15.0	6.0	1
RX741374	BBA1716YXN	RX741379	BBE1716Y		M63x1.5	M50x1.5	70.0	-	15.0	6.0	1
RX741894	ABA1718YXN	RX741899	ABE1718Y		M63x1.5	M75x1.5	80.0	54.4	15.0	22.0	1
RX741384	BBA1816YXN	RX741389	BBE1816Y		M75x1.5	M50x1.5	80.0	-	15.0	8.0	1
RX741644	BBA1817YXN	RX741649	BBE1817Y		M75x1.5	M63x1.5	80.0	-	15.0	8.0	1
RX745394	ABA1881YXN	RX745399	ABE1881Y		M75x1.5	M90x2.0	95.0	66.8	15.0	27.0	1
RX745854	BBA8117YXN	RX745859	BBE8117Y		M90x2.0	M63x1.5	95.0	-	20.0	9.0	1
RX745864	BBA8118YXN	RX745869	BBE8118Y		M90x2.0	M75x1.5	95.0	-	20.0	9.0	1
RX745484	ABA8182YXN	RX745489	ABE8182Y		M90x2.0	M100x2.0	105.0	80.5	20.0	27.0	1
a.A. / o.R.	BBA8218YXN	a.A. / o.R.	BBE8218Y		M100x2.0	M75x1.5	110.0	-	20.0	10.0	1
a.A. / o.R.	BBA8280YXN	a.A. / o.R.	BBE8280Y		M100x2.0	M80x2.0	110.0	-	20.0	10.0	1

Weitere Größen/Gewindekombinationen auf Anfrage. / Further sizes/thread combination on request.  
Weitere Produkte des Herstellers auf Anfrage. / Further products of the manufacturer on request.



ADAPTER / M x NPT / ADAPTER / M x NPT



**Material** Messing, blank; Messing, vern.;  
Edelstahl 1.4404 (Weitere auf Anfrage)

**Schutzart** IP66 / IP68

**ATEX-Kennzeichnung** Ex II2 GD / Ex d IIC Gb / Ex e IIC GB  
Ex tb IIIC Db  
Ex I M2 / Ex d I Mb / Ex e I Mb

**Hinweis** Ex e/d-Adapter, um Gewindeeingänge an Ge-  
häusen und Maschinen mit einem alternativen  
Gewinde zu versehen.

**Material** Natural Brass; Nickel Plated Brass;  
Stainless Steel 316L (Further on Request)

**Protection Class** IP66 / IP68

**ATEX Marking** Ex II2 GD / Ex d IIC Gb / Ex e IIC GB  
Ex tb IIIC Db  
Ex I M2 / Ex d I Mb / Ex e I Mb

**Note** Ex e/d adapter to provide an alternative thread  
to entry threads on enclosures and machines.

Für besondere Bedingungen oder Einschränkungen siehe entsprechende Produktdokumentation.

For specific conditions or limitations please see relevant product documentation.

Zulassungen / Approvals

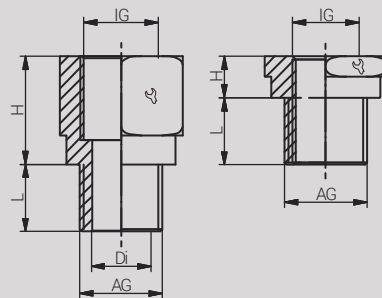
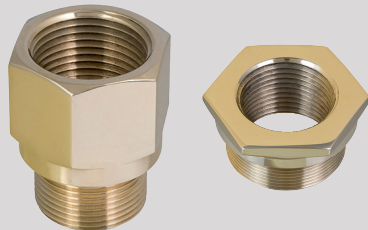


\* abweichende Artikelnummer / variant article number

ITS16ATEX101336X IECEXITS16.0011X EA3C RU C-GB.MI062.B.00447 1003277 NCC 18.0133X GYJ18.1471X 2020 32231 3001350

Artikel- Nummer RST Article Code RST	Hersteller- Nummer Manufacturer Code	Artikel- Nummer RST Article Code RST	Hersteller- Nummer Manufacturer Code	Hersteller Manufacturer	Gewinde Entry Thread			Di (mm)	L (mm)	H (mm)	VPE PU
					AG / Male	IG / Female					
	Messing vern. NP Brass	Messing vern. NP Brass	Edelstahl Stainless Steel	Edelstahl Stainless Steel							
RX744694	ABA1142YXN	RX744699	ABE1142Y	M16x1.5		NPT 1/2"	24.0	11.0	15.0	21.0	1
RX744704	ABA1242YXN	RX744709	ABE1242Y	M20x1.5		NPT 1/2"	24.0	14.4	15.0	21.0	1
RX744964	ABA1243YXN	RX744969	ABE1243Y	M20x1.5		NPT 3/4"	30.5	14.4	15.0	21.0	1
RX744714	BBA1342YXN	RX744719	BBE1342Y	M25x1.5		NPT 1/2"	28.0	-	15.0	4.0	1
RX744974	ABA1343YXN	RX744979	ABE1343Y	M25x1.5		NPT 3/4"	30.5	19.4	15.0	21.0	1
RX745234	ABA1344YXN	RX745239	ABE1344Y	M25x1.5		NPT 1"	37.5	19.4	15.0	26.0	1
RX744724	BBA1442YXN	RX744729	BBE1442Y	M32x1.5		NPT 1/2"	37.5	-	15.0	4.0	1
RX744984	BBA1443YXN	RX744989	BBE1443Y	M32x1.5		NPT 3/4"	37.5	-	15.0	4.0	1
RX745244	ABA1444YXN	RX745249	ABE1444Y	M32x1.5		NPT 1"	37.5	26.8	15.0	27.0	1
RX745504	ABA1445YXN	RX745509	ABE1445Y	M32x1.5		NPT 1 1/4"	47.2	26.8	15.0	27.5	1
RX744994	BBA1543YXN	RX744999	BBE1543Y	M40x1.5		NPT 3/4"	47.2	-	15.0	5.0	1
RX745254	BBA1544YXN	RX745259	BBE1544Y	M40x1.5		NPT 1"	47.2	-	15.0	5.0	1
RX745514	ABA1545YXN	RX745519	ABE1545Y	M40x1.5		NPT 1 1/4"	47.2	33.4	15.0	27.5	1
RX745774	ABA1546YXN	RX745779	ABE1546Y	M40x1.5		NPT 1 1/2"	56.0	33.4	15.0	28.0	1
RX745264	BBA1644YXN	RX745269	BBE1644Y	M50x1.5		NPT 1"	56.0	-	15.0	5.5	1
RX745524	BBA1645YXN	RX745529	BBE1645Y	M50x1.5		NPT 1 1/4"	56.0	-	15.0	5.5	1
RX745784	ABA1646YXN	RX745789	ABE1646Y	M50x1.5		NPT 1 1/2"	56.0	42.8	15.0	28.0	1
RX746044	ABA1647YXN	RX746049	ABE1647Y	M50x1.5		NPT 2"	70.0	42.8	15.0	29.0	1
RX745274	BBA1744YXN	RX745279	BBE1744Y	M63x1.5		NPT 1"	70.0	-	15.0	6.0	1
RX745534	BBA1745YXN	RX745539	BBE1745Y	M63x1.5		NPT 1 1/4"	70.0	-	15.0	6.0	1
RX745794	BBA1746YXN	RX745799	BBE1746Y	M63x1.5		NPT 1 1/2"	70.0	-	15.0	6.0	1
RX746054	ABA1747YXN	RX746059	ABE1747Y	M63x1.5		NPT 2"	70.0	55.2	15.0	29.0	1
RX746314	ABA1748YXN	RX746319	ABE1748Y	M63x1.5		NPT 2 1/2"	80.0	55.2	15.0	40.0	1
RX745804	BBA1846YXN	RX745809	BBE1846Y	M75x1.5		NPT 1 1/2"	80.0	-	15.0	8.0	1
RX746064	BBA1847YXN	RX746069	BBE1847Y	M75x1.5		NPT 2"	80.0	-	15.0	8.0	1
RX746324	ABA1848YXN	RX746329	ABE1848Y	M75x1.5		NPT 2 1/2"	80.0	66.7	15.0	40.0	1
RX746584	ABA1849YXN	RX746589	ABE1849Y	M75x1.5		NPT 3"	105.0	66.7	15.0	41.0	1
RX744284	BBA8147YXN	RX744289	BBE8147Y	M90x2.0	NPT 2"	95.0	-	20.0	9.0	1	
RX744294	BBA8148YXN	RX744299	BBE8148Y	M90x2.0	NPT 2 1/2"	95.0	-	20.0	9.0	1	
RX744304	ABA8149YXN	RX744309	ABE8149Y	M90x2.0	NPT 3"	105.0	80.0	20.0	41.0	1	
RX744314	ABA8186YXN	RX744319	ABE8186Y	M90x2.0	NPT 3 1/2"	120.0	80.0	20.0	43.0	1	
a.A. / o.R.	BBA8247YXN	a.A. / o.R.	BBE8247Y	M100x2.0	NPT 2"	110.0	-	20.0	10.0	1	
a.A. / o.R.	BBA8248YXN	a.A. / o.R.	BBE8248Y	M100x2.0	NPT 2 1/2"	110.0	-	20.0	10.0	1	
a.A. / o.R.	BBA8249YXN	a.A. / o.R.	BBE8249Y	M100x2.0	NPT 3"	110.0	-	20.0	10.0	1	
RX744434	ABA8286YXN	RX744439	ABE8286Y	M100x2.0	NPT 3 1/2"	120.0	90.0	20.0	43.0	1	
a.A. / o.R.	ABA8287YXN	a.A. / o.R.	ABE8287Y	M100x2.0	NPT 4"	130.0	90.0	20.0	44.0	1	

Weitere Größen/Gewindekombinationen auf Anfrage. / Further sizes/thread combination on request.  
Weitere Produkte des Herstellers auf Anfrage. / Further products of the manufacturer on request.





# ADAPTER / NPT x M / ADAPTER / NPT x M

Material	Messing, blank; Messing, vern.; Edelstahl 1.4404 (Weitere auf Anfrage)
Schutzart	IP66 / IP68
ATEX-Kennzeichnung	Ex II2 GD / Ex d IIC Gb / Ex e IIC GB Ex tb IIIC Db Ex I M2 / Ex d I Mb / Ex e I Mb
Hinweis	Ex e/d-Adapter, um Gewindeeingänge an Gehäusen und Maschinen mit einem alternativen Gewinde zu versehen.

Material	Natural Brass; Nickel Plated Brass; Stainless Steel 316L (Further on Request)
Protection Class	IP66 / IP68
ATEX Marking	Ex II2 GD / Ex d IIC Gb / Ex e IIC GB Ex tb IIIC Db Ex I M2 / Ex d I Mb / Ex e I Mb
Note	Ex e/d adapter to provide an alternative thread to entry threads on enclosures and machines.

Für besondere Bedingungen oder Einschränkungen siehe entsprechende Produktdokumentation.

For specific conditions or limitations please see relevant product documentation.

## Zulassungen / Approvals

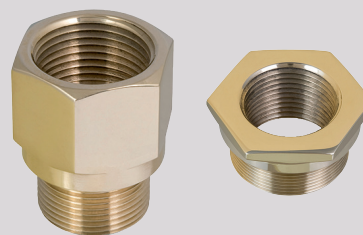
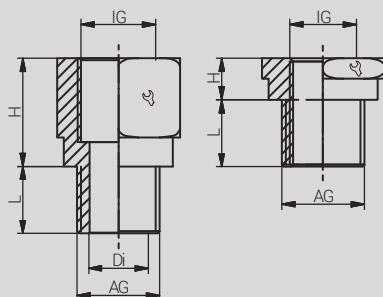
\* abweichende Artikelnummer / variant article number



ITS16ATEX101336X IECEXITS16.0011X EA9C RU C-GB.MIO62.B.00447 1003277 NCC.18.0133X GYJ18.1471X 2020 32231 3001350

Artikel-Nummer RST Article Code RST	Hersteller-Nummer Manufacturer Code	Artikel-Nummer RST Article Code RST	Hersteller-Nummer Manufacturer Code	Hersteller Manufacturer	Gewinde Entry Thread			Di (mm)	L (mm)	H (mm)	VPE PU
					AG / Male	IG / Female					
RX740194	BBA4211YXN	RX740199	BBE4211Y		NPT 1/2"	M16x1.5	24.0	-	20.2	4.0	1
RX740454	ABA4212YXN	RX740459	ABE4212Y		NPT 1/2"	M20x1.5	24.0	14.0	20.2	21.0	1
RX740714	ABA4213YXN	RX740719	ABE4213Y		NPT 1/2"	M25x1.5	30.5	14.0	20.2	21.0	1
RX740204	BBA4311YXN	RX740209	BBE4311Y		NPT 3/4"	M16x1.5	27.9	-	20.5	4.0	1
RX740464	BBA4312YXN	RX740469	BBE4312Y		NPT 3/4"	M20x1.5	27.9	-	20.5	4.0	1
RX740724	ABA4313YXN	RX740729	ABE4313Y		NPT 3/4"	M25x1.5	30.5	19.2	20.5	21.0	1
RX740984	ABA4314YXN	RX740989	ABE4314Y		NPT 3/4"	M32x1.5	37.6	19.2	20.5	21.0	1
RX740474	BBA4412YXN	RX740479	BBE4412Y		NPT 1"	M20x1.5	37.6	-	20.5	5.0	1
RX740734	BBA4413YXN	RX740739	BBE4413Y		NPT 1"	M25x1.5	37.6	-	25.3	5.0	1
RX740994	ABA4414YXN	RX740999	ABE4414Y		NPT 1"	M32x1.5	37.6	25.0	25.3	21.0	1
RX741254	ABA4415YXN	RX741259	ABE4415Y		NPT 1"	M40x1.5	47.2	25.0	25.3	22.0	1
RX740744	BBA4513YXN	RX740749	BBE4513Y		NPT 1 1/4"	M25x1.5	47.2	-	26.0	5.0	1
RX741004	BBA4514YXN	RX741009	BBE4514Y		NPT 1 1/4"	M32x1.5	47.2	-	26.0	5.0	1
RX741264	ABA4515YXN	RX741269	ABE4515Y		NPT 1 1/4"	M40x1.5	47.2	34.0	26.0	22.0	1
RX741524	ABA4516YXN	RX741529	ABE4516Y		NPT 1 1/4"	M50x1.5	55.9	34.0	26.0	22.0	1
RX741014	BBA4614YXN	RX741019	BBE4614Y		NPT 1 1/2"	M32x1.5	56.4	-	26.5	6.0	1
RX741274	BBA4615YXN	RX741279	BBE4615Y		NPT 1 1/2"	M40x1.5	56.4	-	26.5	6.0	1
RX741534	ABA4616YXN	RX741539	ABE4616Y		NPT 1 1/2"	M50x1.5	55.9	40.0	26.5	22.0	1
RX741794	ABA4617YXN	RX741799	ABE4617Y		NPT 1 1/2"	M63x1.5	70.1	40.0	26.5	22.0	1
RX741284	BBA4715YXN	RX741289	BBE4715Y		NPT 2"	M40x1.5	70.1	-	27.2	6.0	1
RX741544	BBA4716YXN	RX741549	BBE4716Y		NPT 2"	M50x1.5	70.1	-	27.2	6.0	1
RX741804	ABA4717YXN	RX741809	ABE4717Y		NPT 2"	M63x1.5	70.1	52.0	27.2	22.0	1
RX742064	ABA4718YXN	RX742069	ABE4718Y		NPT 2"	M75x1.5	80.0	52.0	27.2	22.0	1
RX741554	BBA4816YXN	RX741559	BBE4816Y		NPT 2 1/2"	M50x1.5	80.0	-	40.5	6.5	1
RX741814	BBA4817YXN	RX741819	BBE4817Y		NPT 2 1/2"	M63x1.5	80.0	-	40.5	6.5	1
RX742074	ABA4818YXN	RX742079	ABE4818Y		NPT 2 1/2"	M75x1.5	80.0	63.0	40.5	22.0	1
RX741154	ABA4881YXN	RX741159	ABE4881Y		NPT 2 1/2"	M90x2.0	95.0	63.0	40.5	27.0	1
RX741824	BBA4917YXN	RX741829	BBE4917Y		NPT 3"	M63x1.5	89.0	-	42.0	8.0	1
RX742084	BBA4918YXN	RX742089	BBE4918Y		NPT 3"	M75x1.5	89.0	-	42.0	8.0	1
RX741244	ABA4981YXN	RX741249	ABE4981Y		NPT 3"	M90x2.0	95.0	78.5	42.0	27.0	1
RX741314	ABA4982YXN	RX741319	ABE4982Y		NPT 3"	M100x2.0	105.0	78.5	42.0	27.0	1
RX741434	BBA8618YXN	RX741439	BBE8618Y		NPT 3 1/2"	M75x1.5	110.0	-	43.2	8.5	1
RX741454	ABA8682YXN	RX741459	ABE8682Y		NPT 3 1/2"	M100x2.0	105.0	90.0	43.2	27.0	1
a.A. / o.R.	BBA8781YXN	a.A. / o.R.	BBE8781Y		NPT 4"	M90x2.0	120.0	-	44.5	10.0	1

Weitere Größen/Gewindekombinationen auf Anfrage. / Further sizes/thread combination on request.  
Weitere Produkte des Herstellers auf Anfrage. / Further products of the manufacturer on request.





**Material** Messing, blank; Messing, vern.;  
Edelstahl 1.4404 (Weitere auf Anfrage)

**Schutzart** IP66 / IP68

**ATEX-Kennzeichnung** Ex II2 GD / Ex d IIC Gb / Ex e IIC GB  
Ex tb IIIC Db  
Ex I M2 / Ex d I Mb / Ex e I Mb

**Hinweis** Ex e/d-Adapter, um Gewindeeingänge an Ge-  
häusen und Maschinen zu vergrößern bzw. zu  
verkleinern.

**Material** Natural Brass; Nickel Plated Brass;  
Stainless Steel 316L (Further on Request)

**Protection Class** IP66 / IP68

**ATEX Marking** Ex II2 GD / Ex d IIC Gb / Ex e IIC GB  
Ex tb IIIC Db  
Ex I M2 / Ex d I Mb / Ex e I Mb

**Note** Ex e/d adapter to enlarge or to reduce entry  
threads on enclosures and machines.

Für besondere Bedingungen oder Einschränkungen siehe entsprechende Produktdokumentation.

For specific conditions or limitations please see relevant product documentation.

Zulassungen / Approvals



\* abweichende Artikelnummer / variant article number

ITS16ATEX101336X IECExITS16.0011X EA9C RU C-GB.MIO62.B.00447 1003277 NCC 18.0133X GYJ18.1471X 2020 32231 3001350

Artikel- Nummer RST Article Code RST	Hersteller- Nummer Manufacturer Code	Artikel- Nummer RST Article Code RST	Hersteller- Nummer Manufacturer Code	Hersteller Manufacturer	Gewinde Entry Thread			Di (mm)	L (mm)	H (mm)	VPE PU
					AG / Male	IG / Female					
	Messing vern. NP Brass	Edelstahl Stainless Steel	Edelstahl Stainless Steel	<b>RAXTON</b>	NPT 1/2"	NPT 3/4"	30.5	14.0	20.2	21.0	1
RX745134	ABA4243YXN	RX745139	ABE4243Y		NPT 3/4"	NPT 1/2"	27.9	-	20.5	4.0	1
RX744884	BBA4342YXN	RX744889	BBE4342Y		NPT 3/4"	NPT 1"	37.6	19.2	20.5	27.0	1
RX745404	ABA4344YXN	RX745409	ABE4344Y		NPT 1"	NPT 1/2"	37.6	-	25.3	5.0	1
RX744894	BBA4442YXN	RX744899	BBE4442Y		NPT 1"	NPT 3/4"	37.6	-	25.3	5.0	1
RX745154	BBA4443YXN	RX745159	BBE4443Y		NPT 1"	NPT 1 1/4"	47.2	26.0	25.3	26.5	1
RX745674	ABA4445YXN	RX745679	ABE4445Y		NPT 1 1/4"	NPT 3/4"	47.2	-	26.0	5.0	1
RX745164	BBA4543YXN	RX745169	BBE4543Y		NPT 1 1/4"	NPT 1"	47.2	-	26.0	5.0	1
RX745424	BBA4544YXN	RX745429	BBE4544Y		NPT 1 1/4"	NPT 1 1/2"	55.9	34.0	26.0	28.5	1
RX745944	ABA4546YXN	RX745949	ABE4546Y		NPT 1 1/2"	NPT 1"	56.4	-	26.5	6.0	1
RX745434	BBA4644YXN	RX745439	BBE4644Y		NPT 1 1/2"	NPT 1 1/4"	56.4	-	26.5	6.0	1
RX745694	BBA4645YXN	RX745699	BBE4645Y		NPT 1 1/2"	NPT 2"	70.1	41.0	26.5	29.0	1
RX746214	ABA4647YXN	RX746219	ABE4647Y		NPT 2"	NPT 1"	70.1	-	27.2	6.0	1
RX745444	BBA4744YXN	RX745449	BBE4744Y		NPT 2"	NPT 1 1/4"	70.1	-	27.2	6.0	1
RX745704	BBA4745YXN	RX745709	BBE4745Y		NPT 2"	NPT 1 1/2"	80.0	54.0	27.2	40.0	1
RX745964	BBA4746YXN	RX745969	BBE4746Y		NPT 2 1/2"	NPT 1 1/2"	80.0	-	40.5	6.5	1
RX746484	ABA4748YXN	RX746489	ABE4748Y		NPT 2 1/2"	NPT 2"	80.0	-	40.5	6.5	1
a.A. / o.R.	BBA4846YXN	a.A. / o.R.	BBE4846Y		NPT 2 1/2"	NPT 3"	105.0	64.5	40.5	41.0	1
RX746234	BBA4847YXN	RX746239	BBE4847Y		NPT 3"	NPT 2"	89.0	-	42.0	8.0	1
RX746754	ABA4849YXN	RX746759	ABE4849Y		NPT 3"	NPT 2 1/2"	89.0	-	42.0	8.0	1
RX746244	BBA4947YXN	RX746249	BBE4947Y		NPT 3"	NPT 3 1/2"	120.0	79.0	42.0	43.0	1
RX746504	BBA4948YXN	RX746509	BBE4948Y		NPT 3 1/2"	NPT 3"	110.0	-	43.2	8.5	1
RX744634	ABA4986YXN	RX744639	ABE4986Y		NPT 3 1/2"	NPT 4"	120.0	-	44.5	10.0	1
a.A. / o.R.	BBA8648YXN	a.A. / o.R.	BBE8648Y								
a.A. / o.R.	BBA8649YXN	a.A. / o.R.	BBE8649Y								
a.A. / o.R.	BBA8749YXN	a.A. / o.R.	BBE8749Y								
a.A. / o.R.	BBA8786YXN	a.A. / o.R.	BBE8786Y								

Weitere Größen/Gewindekombinationen auf Anfrage. / Further sizes/thread combination on request.  
Weitere Produkte des Herstellers auf Anfrage. / Further products of the manufacturer on request.

