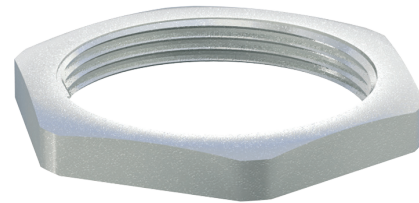


Material

Messing, vernickelt

Material

Nickel Plated Brass



Zubehör

*Accessories*

GEGENMUTTER

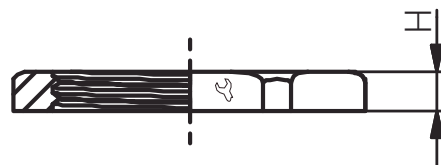
M / PG / NPT

*LOCKNUT*

M / PG / NPT

Produktdokumentation

*Product Documentation*



RST Rabe-System-Technik und Vertriebs-GmbH  
Otto-Lilienthal-Strasse 19  
49134 Wallenhorst


DEUTSCHLAND

+49 5407 8766-0

+49 5407 8766-99

info@rst.eu

www.rst.eu

Artikel Article	Innengewinde Female Thread		H (mm)	VPE PU	Zulassungen Approvals
61006512	M12x1.5	15	2.80	100	-
61006516	M16x1.5	19	2.80	100	-
61006520	M20x1.5	24	3.00	100	-
61006525	M25x1.5	30	3.50	100	-
61006532	M32x1.5	36	4.00	100	-
61006540	M40x1.5	46	5.00	50	-
61006550	M50x1.5	57	5.00	25	-
61006563	M63x1.5	70	6.00	25	-
61006575	M75x1.5	80	7.00	5	-
61006575P200	M75x2.0	80	7.00	5	-
61006580	M80x2.0	90	8.00	5	-
61006585	M85x2.0	95	8.00	5	-
61006590	M90x2.0	100	8.00	5	-
61006407	PG 7	15	2.80	100	-
61006409	PG 9	18	2.80	100	-
61006411	PG 11	21	3.00	100	-
61006413	PG 13.5	23	3.00	100	-
61006416	PG 16	26	3.00	100	-
61006421	PG 21	32	3.50	100	-
61006429	PG 29	41	4.00	50	-
61006436	PG 36	51	5.00	50	-
61006442	PG 42	60	5.00	25	-
61006448	PG 48	64	5.50	10	-
00280104	NPT 1/4"	18	3.0	1	-
00280114	NPT 3/8"	22	3.5	1	-
00280124	NPT 1/2"	28	3.75	1	-
00280134	NPT 3/4"	33	4.0	1	-
00280144	NPT 1"	40	4.75	1	-
00280154	NPT 1 1/4"	50	5.25	1	-
00280164	NPT 1 1/2"	56	5.75	1	-
00280174	NPT 2"	70	6.25	1	-
00280184	NPT 2 1/2"	90	9.0	1	-
00280194	NPT 3"	105	10.0	1	-
00280204	NPT 3 1/2"	120	12.0	1	-
00280214	NPT 4"	135	14.0	1	-

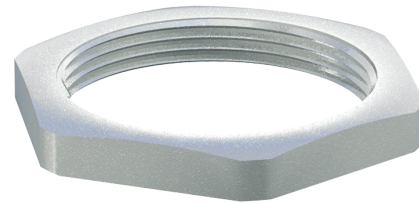
Weitere Gewindegrößen und -typen auf Anfrage. / Additional threadsizes and -types on request.

Material

Edelstahl 1.4305/1.4404

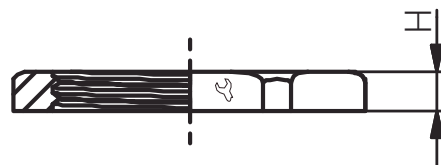
Material

Stainless Steel 3003/316L



Zubehör  
*Accessories*  
GEGENMUTTER  
M / PG / NPT  
*LOCKNUT*  
M / PG / NPT


Produktdokumentation  
*Product Documentation*



RST Rabe-System-Technik und Vertriebs-GmbH  
Otto-Lilienthal-Strasse 19  
49134 Wallenhorst

DEUTSCHLAND

+49 5407 8766-0  
+49 5407 8766-99  
info@rst.eu  
www.rst.eu

Artikel Article		Innengewinde Female Thread			H (mm)		VPE PU		Zulassungen Approvals
1.4305 / 303	1.4404 / 316L		1.4305 / 303	1.4404 / 316L	1.4305 / 303	1.4404 / 316L	1.4305 / 303	1.4404 / 316L	
-	00221099	M10x1,0	-	15.8	-	3.20	-	lose / loose	-
91006512	00221299	M12x1.5	15	17	2.80	3.20	10	lose / loose	-
91006516	00221699	M16x1.5	19	19	3.00	3.20	10	lose / loose	-
91006520	00222099	M20x1.5	24	25.4	3.50	3.50	10	lose / loose	-
91006525	00222599	M25x1.5	30	30	4.00	4.00	10	lose / loose	-
91006532	00223299	M32x1.5	36	36	5.00	4.50	5	lose / loose	-
91006540	00224099	M40x1.5	46	46	5.00	4.80	5	lose / loose	-
91006550	00225099	M50x1.5	55	54	5.00	4.70	2	lose / loose	-
91006563	00226399	M63x1.5	70	80	6.00	6.40	lose / loose	lose / loose	-
91006575	00227599	M75x1.5	80	95	7.00	6.40	5	lose / loose	-
91006575P200	-	M75x2.0	80	-	7.00	-	5	-	-
91006580	00228099	M80x2.0	90	100	8.00	8.50	5	lose / loose	-
91006585	-	M85x2.0	95	-	8.00	-	lose / loose	-	-
91006590	00229099	M90x2.0	100	110	8.00	8.50	5	lose / loose	-

91006407	-	PG 7	17	-	2.80	-	50	-	-
91006409	-	PG 9	19	-	2.80	-	50	-	-
91006411	-	PG 11	22	-	3.00	-	50	-	-
91006413	-	PG 13,5	24	-	3.00	-	50	-	-
91006416	-	PG 16	27	-	3.00	-	50	-	-
91006421	-	PG 21	32	-	3.50	-	25	-	-
91006429	-	PG 29	41	-	4.00	-	25	-	-
91006436	-	PG 36	60	-	5.00	-	50	-	-
91006442	-	PG 42	60	-	5.00	-	25	-	-
91006448	-	PG 48	65	-	5.50	-	10	-	-

-	00280119	NPT 3/8"	-	22	-	3.50	-	lose / loose	-
-	00280129	NPT 1/2"	-	28	-	3.75	-	lose / loose	-
-	00280139	NPT 3/4"	-	33	-	4.00	-	lose / loose	-
-	00280149	NPT 1"	-	41	-	4.75	-	lose / loose	-
-	00280159	NPT 1 1/4"	-	50	-	5.25	-	lose / loose	-
-	00280169	NPT 1 1/2"	-	56	-	5.75	-	lose / loose	-
-	00280179	NPT 2"	-	70	-	6.25	-	lose / loose	-
-	00280189	NPT 2 1/2"	-	90	-	9.00	-	lose / loose	-
-	00280199	NPT 3"	-	105	-	10.00	-	lose / loose	-
-	00280209	NPT 3 1/2"	-	120	-	12.00	-	lose / loose	-
-	00280219	NPT 4"	-	135	-	14.00	-	lose / loose	-

Weitere Gewindegrößen und -typen auf Anfrage. / Additional threadsizes and -types on request.