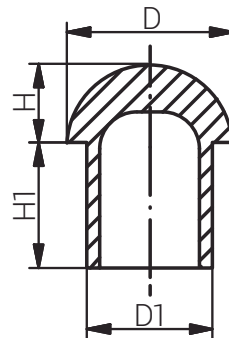


Material Polyamid 6  
Einsatztemperatur -20°C bis +100°C  
kurzzeitig: -30°C bis +150°C

Material Polyamide 6  
Operating Temperature -20°C to +100°C  
intermittent: -30°C to +150°C



Zubehör  
Accessories  
BLINDSTOPFEN  
PROTECTION TAB

Produktdokumentation  
Product Documentation



RST Rabe-System-Technik und Vertriebs-GmbH  
Otto-Lilienthal-Strasse 19  
49134 Wallenhorst

DEUTSCHLAND

+49 5407 8766-0  
+49 5407 8766-99  
info@rst.eu  
www.rst.eu

Artikel Article			kompatibel mit Klemmbereich Compatible with Clamping Range (mm)				D1 (mm)	D (mm)	H1 (mm)	H (mm)	VPE PU	Zulassungen Approvals
RAL7035	RAL7001	RAL9005	Standard Standard	Reduziert Reduced	Doppeldichtung (innen) Double Seal (inner part)	Doppeldichtung (außen) Double Seal (outer part)						
71007407DS	72007407DS	73007407DS		2-5	2-4		4.0	9.2	12.0	4.0	100	-
71007407	72007407	73007512	3-6.5			3-6.5	6.4	9.2	12.0	4.0	100	-
71007409DS	72007409DS	73007409DS		2-6	3-5		5.0	10.5	14.0	5.0	100	-
71007409	72007409	73007516	4-8			4-8	8.0	10.5	13.7	4.7	100	-
71007411DS	72007411DS	73007411DS		3-7	3-7		7.0	13.3	15.0	5.7	100	-
71007411	72007411	73007517	5-10			5-10	9.7	13.3	9.0	5.3	100	-
71007413DS	72007413DS	73007413DS		5-9	5-8.5		8.5	15.8	13.0	7.7	100	-
71007413	72007413	73007520	6-12			6-12	12.0	15.8	13.0	7.7	100	-
71007416DS	72007416DS	73007416DS		7-12	7-12		11.0	18.0	13.5	8.5	50	-
71007416	72007416	73007416	10-14			10-14	13.6	18.0	13.5	8.7	50	-
71007525DS	72007525DS	73007525DS		9-13	8-13		13.0	20.0	14.5	7.0	50	-
71007525	72007525	73007525	11-17			11-17	16.4	20.0	14.5	7.3	50	-
71007421DS	72007421DS	73007421DS		11-15	9-14		14.0	22.0	14.0	9.5	50	-
71007421	72007421	73007421	13-18			13-18	17.8	22.0	14.0	10.0	50	-
71007532DS	72007532DS	73007532DS		9-16	11-16		16.1	24.0	15.5	9.0	10	-
71007532	72007532	73007532	15-21			15-21	20.4	24.0	15.5	9.2	10	-
71007429DS	72007429DS	73007429DS		12-20	13-20		19.7	28.5	15.0	9.7	10	-
71007429	72007429	73007429	18-25			18-25	25.0	28.5	15.0	9.7	10	-
71007540DS	72007540DS	73007540DS		16-23	16-21		20.5	31.5	15.8	9.2	10	-
71007540	72007540	73007540	19-28			19-28	27.3	31.5	15.8	9.2	10	-
71007436DS	72007436DS	73007436DS		20-26	20-26		25.7	36.8	17.0	10.7	10	-
71007436	72007436	73007436	22-32			22-32	31.8	36.8	17.0	10.7	10	-
71007442DS	72007442DS	73007442DS		25-31	21-31		30.6	43.3	20.2	11.9	10	-
71007442	72007442	73007442	30-38			30-38	38.0	43.3	20.2	11.9	10	-
71007448DS	72007448DS	73007448DS		29-35	27-35		34.6	51.0	22.5	16.0	10	-
71007448	72007448	73007448	34-44			34-44	44.2	51.0	22.5	16.0	10	-