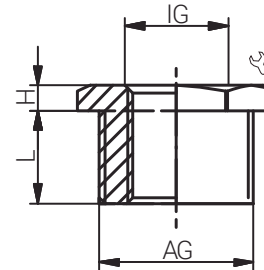
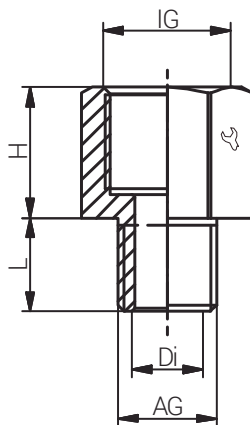
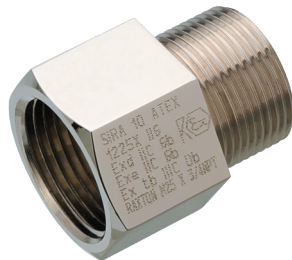


| | |
|-----------|--|
| Material | Messing, blank; Messing, vernickelt; Edelstahl 1.4404 (Weitere auf Anfrage) |
| Schutzart | IP66 / IP68 |

| | |
|------------------|--|
| Material | Natural Brass; Nickel Plated Brass; Stainless Steel 316L (Further on Request) |
| Protection Class | IP66 / IP68 |

Für besondere Bedingungen oder Einschränkungen siehe entsprechende Produktdokumentation.

For specific conditions or limitations please see relevant product documentation.



Zubehör

Accessories

ERWEITERUNG & REDUZIERUNGEN /M x M
ENLARGER & REDUCER
M x M

Produktdokumentation
Product Documentation



RST Rabe-System-Technik und Vertriebs-GmbH
Otto-Lilienthal-Strasse 19
49134 Wallenhorst
DEUTSCHLAND

+49 5407 8766-0
+49 5407 8766-99
info@rst.eu
www.rst.eu

| Artikelnummer RST Article Code RST | Hersteller-nummer Manufacturer Code | Artikelnummer RST Article Code RST | Hersteller-nummer Manufacturer Code | Hersteller Manufacturer | Gewinde Entry Thread | |  | Di (mm) | L (mm) | H (mm) | VPE PU | Zulassungen Approvals |
|---------------------------------------|--|---------------------------------------|--|---|-------------------------|-------------|---|------------|-----------|-----------|---|---|
| | | | | | AG / Male | IG / Female | | | | | | |
| RX745834 | BBA1104YXN | RX745839 | BBE1104Y |  | M16x1.5 | M12x1.5 | 19.0 | - | 15.0 | 3.5 | 1 | ATEX/IECEX/EAC/cCSAus/ INMETRO/NEPSI/CCC/UKEX |
| RX740274 | ABA1112YXN | RX740279 | ABE1112Y | | M16x1.5 | M20x1.5 | 24.0 | 10.4 | 15.0 | 21.0 | 1 | ATEX/IECEX/EAC/cCSAus/ INMETRO/NEPSI/CCC/UKEX |
| RX745844 | BBA1204YXN | RX745849 | BBE1204Y | | M20x1.5 | M12x1.5 | 24.0 | - | 15.0 | 4.0 | 1 | ATEX/IECEX/EAC/cCSAus/ INMETRO/NEPSI/CCC/UKEX |
| RX740024 | BBA1211YXN | RX740029 | BBE1211Y | | M20x1.5 | M16x1.5 | 24.0 | - | 15.0 | 4.0 | 1 | ATEX/IECEX/EAC/cCSAus/ INMETRO/NEPSI/CCC/UKEX |
| RX740544 | ABA1213YXN | RX740549 | ABE1213Y | | M20x1.5 | M25x1.5 | 30.5 | 14.4 | 15.0 | 21.0 | 1 | ATEX/IECEX/EAC/cCSAus/ INMETRO/NEPSI/CCC/UKEX |
| RX740034 | BBA1311YXN | RX740039 | BBE1311Y | | M25x1.5 | M16x1.5 | 28.0 | - | 15.0 | 4.0 | 1 | ATEX/IECEX/EAC/cCSAus/ INMETRO/NEPSI/CCC/UKEX |
| RX740294 | BBA1312YXN | RX740299 | BBE1312Y | | M25x1.5 | M20x1.5 | 28.0 | - | 15.0 | 4.0 | 1 | ATEX/IECEX/EAC/cCSAus/ INMETRO/NEPSI/CCC/UKEX |
| RX740814 | ABA1314YXN | RX740819 | ABE1314Y | | M25x1.5 | M32x1.5 | 37.5 | 19.4 | 15.0 | 22.0 | 1 | ATEX/IECEX/EAC/cCSAus/ INMETRO/NEPSI/CCC/UKEX |
| RX740304 | BBA1412YXN | RX740309 | BBE1412Y | | M32x1.5 | M20x1.5 | 37.5 | - | 15.0 | 4.0 | 1 | ATEX/IECEX/EAC/cCSAus/ INMETRO/NEPSI/CCC/UKEX |
| RX740564 | BBA1413YXN | RX740569 | BBE1413Y | | M32x1.5 | M25x1.5 | 37.5 | - | 15.0 | 4.0 | 1 | ATEX/IECEX/EAC/cCSAus/ INMETRO/NEPSI/CCC/UKEX |
| RX741084 | ABA1415YXN | RX741089 | ABE1415Y | | M32x1.5 | M40x1.5 | 47.0 | 26.8 | 15.0 | 22.0 | 1 | ATEX/IECEX/EAC/cCSAus/ INMETRO/NEPSI/CCC/UKEX |
| RX740574 | BBA1513YXN | RX740579 | BBE1513Y | | M40x1.5 | M25x1.5 | 47.0 | - | 15.0 | 5.0 | 1 | ATEX/IECEX/EAC/cCSAus/ INMETRO/NEPSI/CCC/UKEX |
| RX740834 | BBA1514YXN | RX740839 | BBE1514Y | | M40x1.5 | M32x1.5 | 47.0 | - | 15.0 | 5.0 | 1 | ATEX/IECEX/EAC/cCSAus/ INMETRO/NEPSI/CCC/UKEX |
| RX741354 | ABA1516YXN | RX741359 | ABE1516Y | | M40x1.5 | M50x1.5 | 56.0 | 33.5 | 15.0 | 22.0 | 1 | ATEX/IECEX/EAC/cCSAus/ INMETRO/NEPSI/CCC/UKEX |
| RX740844 | BBA1614YXN | RX740849 | BBE1614Y | | M50x1.5 | M32x1.5 | 56.0 | - | 15.0 | 5.5 | 1 | ATEX/IECEX/EAC/cCSAus/ INMETRO/NEPSI/CCC/UKEX |
| RX741104 | BBA1615YXN | RX741109 | BBE1615Y | | M50x1.5 | M40x1.5 | 56.0 | - | 15.0 | 5.5 | 1 | ATEX/IECEX/EAC/cCSAus/ INMETRO/NEPSI/CCC/UKEX |
| RX741624 | ABA1617YXN | RX741629 | ABE1617Y | | M50x1.5 | M63x1.5 | 70.0 | 42.8 | 15.0 | 22.0 | 1 | ATEX/IECEX/EAC/cCSAus/ INMETRO/NEPSI/CCC/UKEX |
| RX741114 | BBA1715YXN | RX741119 | BBE1715Y | | M63x1.5 | M40x1.5 | 70.0 | - | 15.0 | 6.0 | 1 | ATEX/IECEX/EAC/cCSAus/ INMETRO/NEPSI/CCC/UKEX |
| RX741374 | BBA1716YXN | RX741379 | BBE1716Y | | M63x1.5 | M50x1.5 | 70.0 | - | 15.0 | 6.0 | 1 | ATEX/IECEX/EAC/cCSAus/ INMETRO/NEPSI/CCC/UKEX |
| RX741894 | ABA1718YXN | RX741899 | ABE1718Y | | M63x1.5 | M75x1.5 | 80.0 | 54.4 | 15.0 | 22.0 | 1 | ATEX/IECEX/EAC/cCSAus/ INMETRO/NEPSI/CCC/UKEX |
| RX741384 | BBA1816YXN | RX741389 | BBE1816Y | | M75x1.5 | M50x1.5 | 80.0 | - | 15.0 | 8.0 | 1 | ATEX/IECEX/EAC/cCSAus/ INMETRO/NEPSI/CCC/UKEX |
| RX741644 | BBA1817YXN | RX741649 | BBE1817Y | | M75x1.5 | M63x1.5 | 80.0 | - | 15.0 | 8.0 | 1 | ATEX/IECEX/EAC/cCSAus/ INMETRO/NEPSI/CCC/UKEX |
| RX745394 | ABA1881YXN | RX745399 | ABE1881Y | | M75x1.5 | M90x2.0 | 95.0 | 66.8 | 15.0 | 27.0 | 1 | ATEX/IECEX/EAC/cCSAus/ INMETRO/NEPSI/CCC/UKEX |
| RX745854 | BBA8117YXN | RX745859 | BBE8117Y | | M90x2.0 | M63x1.5 | 95.0 | - | 20.0 | 9.0 | 1 | ATEX/IECEX/EAC/cCSAus/ INMETRO/NEPSI/CCC/UKEX |
| RX745864 | BBA8118YXN | RX745869 | BBE8118Y | | M90x2.0 | M75x1.5 | 95.0 | - | 20.0 | 9.0 | 1 | ATEX/IECEX/EAC/cCSAus/ INMETRO/NEPSI/CCC/UKEX |
| RX745484 | ABA8182YXN | RX745489 | ABE8182Y | | M90x2.0 | M100x2.0 | 105.0 | 80.5 | 20.0 | 27.0 | 1 | ATEX/IECEX/EAC/cCSAus/ INMETRO/NEPSI/CCC/UKEX |
| a.A. / o.R. | BBA8218YXN | a.A. / o.R. | BBE8218Y | M100x2.0 | M75x1.5 | 110.0 | - | 20.0 | 10.0 | 1 | ATEX/IECEX/EAC/cCSAus/ INMETRO/NEPSI/CCC/UKEX | |
| a.A. / o.R. | BBA8280YXN | a.A. / o.R. | BBE8280Y | M100x2.0 | M80x2.0 | 110.0 | - | 20.0 | 10.0 | 1 | ATEX/IECEX/EAC/cCSAus/ INMETRO/NEPSI/CCC/UKEX | |

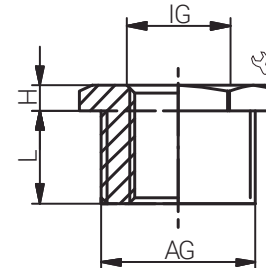
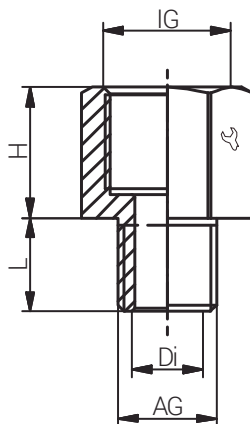
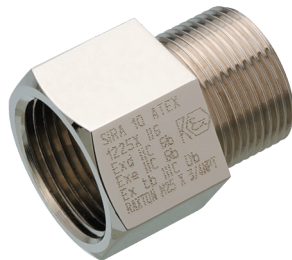
Weitere Größen/Gewindekombinationen auf Anfrage. / Further sizes/thread combination on request.
 Weitere Produkte des Herstellers auf Anfrage. / Further products of the manufacturer on request.

| | |
|-----------|--|
| Material | Messing, blank; Messing, vernickelt; Edelstahl 1.4404 (Weitere auf Anfrage) |
| Schutzart | IP66 / IP68 |

| | |
|------------------|--|
| Material | Natural Brass; Nickel Plated Brass; Stainless Steel 316L (Further on Request) |
| Protection Class | IP66 / IP68 |

Für besondere Bedingungen oder Einschränkungen siehe entsprechende Produktdokumentation.

For specific conditions or limitations please see relevant product documentation.



Zubehör

Accessories



ERWEITERUNG & REDU-
ZIERUNGEN / M x NPT
ENLARGER & REDUCER
M x NPT

Produktdokumentation
Product Documentation



RST Rabe-System-Technik und Vertriebs-GmbH
Otto-Lilienthal-Strasse 19
49134 Wallenhorst
DEUTSCHLAND

+49 5407 8766-0
+49 5407 8766-99
info@rst.eu
www.rst.eu

| Artikelnummer RST Article Code RST | Herstellernummer Manufacturer Code | Artikelnummer RST Article Code RST | Herstellernummer Manufacturer Code | Hersteller Manufacturer | Gewinde Entry Thread | |  | Di (mm) | L (mm) | H (mm) | VPE PU | Zulassungen Approvals |
|---------------------------------------|---------------------------------------|---------------------------------------|---------------------------------------|--|-------------------------|------------|---|------------|-----------|-----------|---|---|
| | | | | | AG/Male | IG/Female | | | | | | |
| RX744694 | ABA1142YXN | RX744699 | ABE1142Y |  | M16x1.5 | NPT 1/2" | 24.0 | 11.0 | 15.0 | 21.0 | 1 | ATEX/IECEX/EAC/cCSAus/ INMETRO/NEPSI/CCC/UKEX |
| RX744704 | ABA1242YXN | RX744709 | ABE1242Y | | M20x1.5 | NPT 1/2" | 24.0 | 14.4 | 15.0 | 21.0 | 1 | ATEX/IECEX/EAC/cCSAus/ INMETRO/NEPSI/CCC/UKEX |
| RX744964 | ABA1243YXN | RX744969 | ABE1243Y | | M20x1.5 | NPT 3/4" | 30.5 | 14.4 | 15.0 | 21.0 | 1 | ATEX/IECEX/EAC/cCSAus/ INMETRO/NEPSI/CCC/UKEX |
| RX744714 | BBA1342YXN | RX744719 | BBE1342Y | | M25x1.5 | NPT 1/2" | 28.0 | - | 15.0 | 4.0 | 1 | ATEX/IECEX/EAC/cCSAus/ INMETRO/NEPSI/CCC/UKEX |
| RX744974 | ABA1343YXN | RX744979 | ABE1343Y | | M25x1.5 | NPT 3/4" | 30.5 | 19.4 | 15.0 | 21.0 | 1 | ATEX/IECEX/EAC/cCSAus/ INMETRO/NEPSI/CCC/UKEX |
| RX745234 | ABA1344YXN | RX745239 | ABE1344Y | | M25x1.5 | NPT 1" | 37.5 | 19.4 | 15.0 | 26.0 | 1 | ATEX/IECEX/EAC/cCSAus/ INMETRO/NEPSI/CCC/UKEX |
| RX744724 | BBA1442YXN | RX744729 | BBE1442Y | | M32x1.5 | NPT 1/2" | 37.5 | - | 15.0 | 4.0 | 1 | ATEX/IECEX/EAC/cCSAus/ INMETRO/NEPSI/CCC/UKEX |
| RX744984 | BBA1443YXN | RX744989 | BBE1443Y | | M32x1.5 | NPT 3/4" | 37.5 | - | 15.0 | 4.0 | 1 | ATEX/IECEX/EAC/cCSAus/ INMETRO/NEPSI/CCC/UKEX |
| RX745244 | ABA1444YXN | RX745249 | ABE1444Y | | M32x1.5 | NPT 1" | 37.5 | 26.8 | 15.0 | 27.0 | 1 | ATEX/IECEX/EAC/cCSAus/ INMETRO/NEPSI/CCC/UKEX |
| RX745504 | ABA1445YXN | RX745509 | ABE1445Y | | M32x1.5 | NPT 1 1/4" | 47.2 | 26.8 | 15.0 | 27.5 | 1 | ATEX/IECEX/EAC/cCSAus/ INMETRO/NEPSI/CCC/UKEX |
| RX744994 | BBA1543YXN | RX744999 | BBE1543Y | | M40x1.5 | NPT 3/4" | 47.2 | - | 15.0 | 5.0 | 1 | ATEX/IECEX/EAC/cCSAus/ INMETRO/NEPSI/CCC/UKEX |
| RX745254 | BBA1544YXN | RX745259 | BBE1544Y | | M40x1.5 | NPT 1" | 47.2 | - | 15.0 | 5.0 | 1 | ATEX/IECEX/EAC/cCSAus/ INMETRO/NEPSI/CCC/UKEX |
| RX745514 | ABA1545YXN | RX745519 | ABE1545Y | | M40x1.5 | NPT 1 1/4" | 47.2 | 33.4 | 15.0 | 27.5 | 1 | ATEX/IECEX/EAC/cCSAus/ INMETRO/NEPSI/CCC/UKEX |
| RX745774 | ABA1546YXN | RX745779 | ABE1546Y | | M40x1.5 | NPT 1 1/2" | 56.0 | 33.4 | 15.0 | 28.0 | 1 | ATEX/IECEX/EAC/cCSAus/ INMETRO/NEPSI/CCC/UKEX |
| RX745264 | BBA1644YXN | RX745269 | BBE1644Y | | M50x1.5 | NPT 1" | 56.0 | - | 15.0 | 5.5 | 1 | ATEX/IECEX/EAC/cCSAus/ INMETRO/NEPSI/CCC/UKEX |
| RX745524 | BBA1645YXN | RX745529 | BBE1645Y | | M50x1.5 | NPT 1 1/4" | 56.0 | - | 15.0 | 5.5 | 1 | ATEX/IECEX/EAC/cCSAus/ INMETRO/NEPSI/CCC/UKEX |
| RX745784 | ABA1646YXN | RX745789 | ABE1646Y | | M50x1.5 | NPT 1 1/2" | 56.0 | 42.8 | 15.0 | 28.0 | 1 | ATEX/IECEX/EAC/cCSAus/ INMETRO/NEPSI/CCC/UKEX |
| RX746044 | ABA1647YXN | RX746049 | ABE1647Y | | M50x1.5 | NPT 2" | 70.0 | 42.8 | 15.0 | 29.0 | 1 | ATEX/IECEX/EAC/cCSAus/ INMETRO/NEPSI/CCC/UKEX |
| RX745274 | BBA1744YXN | RX745279 | BBE1744Y | | M63x1.5 | NPT 1" | 70.0 | - | 15.0 | 6.0 | 1 | ATEX/IECEX/EAC/cCSAus/ INMETRO/NEPSI/CCC/UKEX |
| RX745534 | BBA1745YXN | RX745539 | BBE1745Y | | M63x1.5 | NPT 1 1/4" | 70.0 | - | 15.0 | 6.0 | 1 | ATEX/IECEX/EAC/cCSAus/ INMETRO/NEPSI/CCC/UKEX |
| RX745794 | BBA1746YXN | RX745799 | BBE1746Y | | M63x1.5 | NPT 1 1/2" | 70.0 | - | 15.0 | 6.0 | 1 | ATEX/IECEX/EAC/cCSAus/ INMETRO/NEPSI/CCC/UKEX |
| RX746054 | ABA1747YXN | RX746059 | ABE1747Y | | M63x1.5 | NPT 2" | 70.0 | 55.2 | 15.0 | 29.0 | 1 | ATEX/IECEX/EAC/cCSAus/ INMETRO/NEPSI/CCC/UKEX |
| RX746314 | ABA1748YXN | RX746319 | ABE1748Y | | M63x1.5 | NPT 2 1/2" | 80.0 | 55.2 | 15.0 | 40.0 | 1 | ATEX/IECEX/EAC/cCSAus/ INMETRO/NEPSI/CCC/UKEX |
| RX745804 | BBA1846YXN | RX745809 | BBE1846Y | | M75x1.5 | NPT 1 1/2" | 80.0 | - | 15.0 | 8.0 | 1 | ATEX/IECEX/EAC/cCSAus/ INMETRO/NEPSI/CCC/UKEX |
| RX746064 | BBA1847YXN | RX746069 | BBE1847Y | | M75x1.5 | NPT 2" | 80.0 | - | 15.0 | 8.0 | 1 | ATEX/IECEX/EAC/cCSAus/ INMETRO/NEPSI/CCC/UKEX |
| RX746324 | ABA1848YXN | RX746329 | ABE1848Y | | M75x1.5 | NPT 2 1/2" | 80.0 | 66.7 | 15.0 | 40.0 | 1 | ATEX/IECEX/EAC/cCSAus/ INMETRO/NEPSI/CCC/UKEX |
| RX746584 | ABA1849YXN | RX746589 | ABE1849Y | | M75x1.5 | NPT 3" | 105.0 | 66.7 | 15.0 | 41.0 | 1 | ATEX/IECEX/EAC/cCSAus/ INMETRO/NEPSI/CCC/UKEX |
| RX744284 | BBA8147YXN | RX744289 | BBE8147Y | | M90x2.0 | NPT 2" | 95.0 | - | 20.0 | 9.0 | 1 | ATEX/IECEX/EAC/cCSAus/ INMETRO/NEPSI/CCC/UKEX |
| RX744294 | BBA8148YXN | RX744299 | BBE8148Y | | M90x2.0 | NPT 2 1/2" | 95.0 | - | 20.0 | 9.0 | 1 | ATEX/IECEX/EAC/cCSAus/ INMETRO/NEPSI/CCC/UKEX |
| RX744304 | ABA8149YXN | RX744309 | ABE8149Y | | M90x2.0 | NPT 3" | 105.0 | 80.0 | 20.0 | 41.0 | 1 | ATEX/IECEX/EAC/cCSAus/ INMETRO/NEPSI/CCC/UKEX |
| RX744314 | ABA8186YXN | RX744319 | ABE8186Y | M90x2.0 | NPT 3 1/2" | 120.0 | 80.0 | 20.0 | 43.0 | 1 | ATEX/IECEX/EAC/cCSAus/ INMETRO/NEPSI/CCC/UKEX | |
| a.A./o.R. | BBA8247YXN | a.A./o.R. | BBE8247Y | M100x2.0 | NPT 2" | 110.0 | - | 20.0 | 10.0 | 1 | ATEX/IECEX/EAC/cCSAus/ INMETRO/NEPSI/CCC/UKEX | |
| a.A./o.R. | BBA8248YXN | a.A./o.R. | BBE8248Y | M100x2.0 | NPT 2 1/2" | 110.0 | - | 20.0 | 10.0 | 1 | ATEX/IECEX/EAC/cCSAus/ INMETRO/NEPSI/CCC/UKEX | |
| a.A./o.R. | BBA8249YXN | a.A./o.R. | BBE8249Y | M100x2.0 | NPT 3" | 110.0 | - | 20.0 | 10.0 | 1 | ATEX/IECEX/EAC/cCSAus/ INMETRO/NEPSI/CCC/UKEX | |
| RX744434 | ABA8286YXN | RX744439 | ABE8286Y | M100x2.0 | NPT 3 1/2" | 120.0 | 90.0 | 20.0 | 43.0 | 1 | ATEX/IECEX/EAC/cCSAus/ INMETRO/NEPSI/CCC/UKEX | |
| a.A./o.R. | ABA8287YXN | a.A./o.R. | ABE8287Y | M100x2.0 | NPT 4" | 130.0 | 90.0 | 20.0 | 44.0 | 1 | ATEX/IECEX/EAC/cCSAus/ INMETRO/NEPSI/CCC/UKEX | |

Weitere Größen/Gewindekombinationen auf Anfrage. / Further sizes/thread combination on request.

Weitere Produkte des Herstellers auf Anfrage. / Further products of the manufacturer on request.

Material Messing, blank; Messing, vernickelt;
Edelstahl 1.4404 (Weitere auf Anfrage)

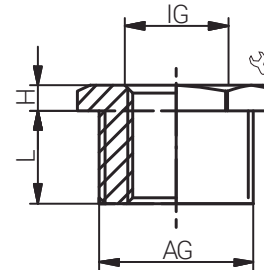
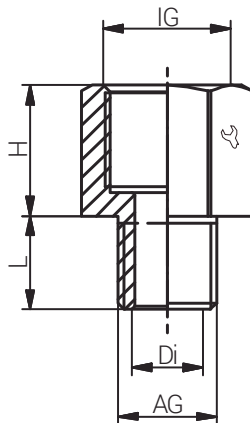
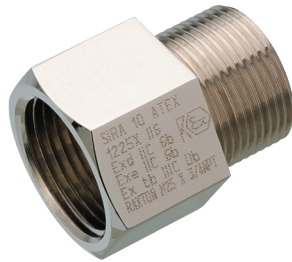
Schutzart IP66 / IP68

Material Natural Brass; Nickel Plated Brass;
Stainless Steel 316L (Further on Request)

Protection Class IP66 / IP68

Für besondere Bedingungen oder Einschränkungen siehe entsprechende Produktdokumentation.

For specific conditions or limitations please see relevant product documentation.



Zubehör

Accessories



ERWEITERUNG & REDU-
ZIERUNGEN /NPT x M
ENLARGER & REDUCER
NPT x M

Produktdokumentation
Product Documentation



RST Rabe-System-Technik und Vertriebs-GmbH
Otto-Lilienthal-Strasse 19
49134 Wallenhorst
DEUTSCHLAND

+49 5407 8766-0
+49 5407 8766-99
info@rst.eu
www.rst.eu

| Artikelnummer RST Article Code RST | Herstellernummer Manufacturer Code | Artikelnummer RST Article Code RST | Herstellernummer Manufacturer Code | Hersteller Manufacturer | Gewinde Entry Thread | |  | Di (mm) | L (mm) | H (mm) | VPE PU | Zulassungen Approvals |
|---------------------------------------|---------------------------------------|---------------------------------------|---------------------------------------|---|-------------------------|-----------|---|------------|-----------|-----------|-----------|---|
| | | | | | AG/Male | IG/Female | | | | | | |
| RX740194 | BBA4211YXN | RX740199 | BBE4211Y |  | NPT 1/2" | M16x1.5 | 24.0 | - | 20.2 | 4.0 | 1 | ATEX/IECEX/EAC/cCSAus/ INMETRO/NEPSI/CCC/UKEX |
| RX740454 | ABA4212YXN | RX740459 | ABE4212Y | | NPT 1/2" | M20x1.5 | 24.0 | 14.0 | 20.2 | 21.0 | 1 | ATEX/IECEX/EAC/cCSAus/ INMETRO/NEPSI/CCC/UKEX |
| RX740714 | ABA4213YXN | RX740719 | ABE4213Y | | NPT 1/2" | M25x1.5 | 30.5 | 14.0 | 20.2 | 21.0 | 1 | ATEX/IECEX/EAC/cCSAus/ INMETRO/NEPSI/CCC/UKEX |
| RX740204 | BBA4311YXN | RX740209 | BBE4311Y | | NPT 3/4" | M16x1.5 | 27.9 | - | 20.5 | 4.0 | 1 | ATEX/IECEX/EAC/cCSAus/ INMETRO/NEPSI/CCC/UKEX |
| RX740464 | BBA4312YXN | RX740469 | BBE4312Y | | NPT 3/4" | M20x1.5 | 27.9 | - | 20.5 | 4.0 | 1 | ATEX/IECEX/EAC/cCSAus/ INMETRO/NEPSI/CCC/UKEX |
| RX740724 | ABA4313YXN | RX740729 | ABE4313Y | | NPT 3/4" | M25x1.5 | 30.5 | 19.2 | 20.5 | 21.0 | 1 | ATEX/IECEX/EAC/cCSAus/ INMETRO/NEPSI/CCC/UKEX |
| RX740984 | ABA4314YXN | RX740989 | ABE4314Y | | NPT 3/4" | M32x1.5 | 37.6 | 19.2 | 20.5 | 21.0 | 1 | ATEX/IECEX/EAC/cCSAus/ INMETRO/NEPSI/CCC/UKEX |
| RX740474 | BBA4412YXN | RX740479 | BBE4412Y | | NPT 1" | M20x1.5 | 37.6 | - | 20.5 | 5.0 | 1 | ATEX/IECEX/EAC/cCSAus/ INMETRO/NEPSI/CCC/UKEX |
| RX740734 | BBA4413YXN | RX740739 | BBE4413Y | | NPT 1" | M25x1.5 | 37.6 | - | 25.3 | 5.0 | 1 | ATEX/IECEX/EAC/cCSAus/ INMETRO/NEPSI/CCC/UKEX |
| RX740994 | ABA4414YXN | RX740999 | ABE4414Y | | NPT 1" | M32x1.5 | 37.6 | 25.0 | 25.3 | 21.0 | 1 | ATEX/IECEX/EAC/cCSAus/ INMETRO/NEPSI/CCC/UKEX |
| RX741254 | ABA4415YXN | RX741259 | ABE4415Y | | NPT 1" | M40x1.5 | 47.2 | 25.0 | 25.3 | 22.0 | 1 | ATEX/IECEX/EAC/cCSAus/ INMETRO/NEPSI/CCC/UKEX |
| RX740744 | BBA4513YXN | RX740749 | BBE4513Y | | NPT 1 1/4" | M25x1.5 | 47.2 | - | 26.0 | 5.0 | 1 | ATEX/IECEX/EAC/cCSAus/ INMETRO/NEPSI/CCC/UKEX |
| RX741004 | BBA4514YXN | RX741009 | BBE4514Y | | NPT 1 1/4" | M32x1.5 | 47.2 | - | 26.0 | 5.0 | 1 | ATEX/IECEX/EAC/cCSAus/ INMETRO/NEPSI/CCC/UKEX |
| RX741264 | ABA4515YXN | RX741269 | ABE4515Y | | NPT 1 1/4" | M40x1.5 | 47.2 | 34.0 | 26.0 | 22.0 | 1 | ATEX/IECEX/EAC/cCSAus/ INMETRO/NEPSI/CCC/UKEX |
| RX741524 | ABA4516YXN | RX741529 | ABE4516Y | | NPT 1 1/4" | M50x1.5 | 55.9 | 34.0 | 26.0 | 22.0 | 1 | ATEX/IECEX/EAC/cCSAus/ INMETRO/NEPSI/CCC/UKEX |
| RX741014 | BBA4614YXN | RX741019 | BBE4614Y | | NPT 1 1/2" | M32x1.5 | 56.4 | - | 26.5 | 6.0 | 1 | ATEX/IECEX/EAC/cCSAus/ INMETRO/NEPSI/CCC/UKEX |
| RX741274 | BBA4615YXN | RX741279 | BBE4615Y | | NPT 1 1/2" | M40x1.5 | 56.4 | - | 26.5 | 6.0 | 1 | ATEX/IECEX/EAC/cCSAus/ INMETRO/NEPSI/CCC/UKEX |
| RX741534 | ABA4616YXN | RX741539 | ABE4616Y | | NPT 1 1/2" | M50x1.5 | 55.9 | 40.0 | 26.5 | 22.0 | 1 | ATEX/IECEX/EAC/cCSAus/ INMETRO/NEPSI/CCC/UKEX |
| RX741794 | ABA4617YXN | RX741799 | ABE4617Y | | NPT 1 1/2" | M63x1.5 | 70.1 | 40.0 | 26.5 | 22.0 | 1 | ATEX/IECEX/EAC/cCSAus/ INMETRO/NEPSI/CCC/UKEX |
| RX741284 | BBA4715YXN | RX741289 | BBE4715Y | | NPT 2" | M40x1.5 | 70.1 | - | 27.2 | 6.0 | 1 | ATEX/IECEX/EAC/cCSAus/ INMETRO/NEPSI/CCC/UKEX |
| RX741544 | BBA4716YXN | RX741549 | BBE4716Y | | NPT 2" | M50x1.5 | 70.1 | - | 27.2 | 6.0 | 1 | ATEX/IECEX/EAC/cCSAus/ INMETRO/NEPSI/CCC/UKEX |
| RX741804 | ABA4717YXN | RX741809 | ABE4717Y | | NPT 2" | M63x1.5 | 70.1 | 52.0 | 27.2 | 22.0 | 1 | ATEX/IECEX/EAC/cCSAus/ INMETRO/NEPSI/CCC/UKEX |
| RX742064 | ABA4718YXN | RX742069 | ABE4718Y | | NPT 2" | M75x1.5 | 80.0 | 52.0 | 27.2 | 22.0 | 1 | ATEX/IECEX/EAC/cCSAus/ INMETRO/NEPSI/CCC/UKEX |
| RX741554 | BBA4816YXN | RX741559 | BBE4816Y | | NPT 2 1/2" | M50x1.5 | 80.0 | - | 40.5 | 6.5 | 1 | ATEX/IECEX/EAC/cCSAus/ INMETRO/NEPSI/CCC/UKEX |
| RX741814 | BBA4817YXN | RX741819 | BBE4817Y | | NPT 2 1/2" | M63x1.5 | 80.0 | - | 40.5 | 6.5 | 1 | ATEX/IECEX/EAC/cCSAus/ INMETRO/NEPSI/CCC/UKEX |
| RX742074 | ABA4818YXN | RX742079 | ABE4818Y | | NPT 2 1/2" | M75x1.5 | 80.0 | 63.0 | 40.5 | 22.0 | 1 | ATEX/IECEX/EAC/cCSAus/ INMETRO/NEPSI/CCC/UKEX |
| RX741154 | ABA4881YXN | RX741159 | ABE4881Y | | NPT 2 1/2" | M90x2.0 | 95.0 | 63.0 | 40.5 | 27.0 | 1 | ATEX/IECEX/EAC/cCSAus/ INMETRO/NEPSI/CCC/UKEX |
| RX741824 | BBA4917YXN | RX741829 | BBE4917Y | | NPT 3" | M63x1.5 | 89.0 | - | 42.0 | 8.0 | 1 | ATEX/IECEX/EAC/cCSAus/ INMETRO/NEPSI/CCC/UKEX |
| RX742084 | BBA4918YXN | RX742089 | BBE4918Y | | NPT 3" | M75x1.5 | 89.0 | - | 42.0 | 8.0 | 1 | ATEX/IECEX/EAC/cCSAus/ INMETRO/NEPSI/CCC/UKEX |
| RX741244 | ABA4981YXN | RX741249 | ABE4981Y | | NPT 3" | M90x2.0 | 95.0 | 78.5 | 42.0 | 27.0 | 1 | ATEX/IECEX/EAC/cCSAus/ INMETRO/NEPSI/CCC/UKEX |
| RX741314 | ABA4982YXN | RX741319 | ABE4982Y | | NPT 3" | M100x2.0 | 105.0 | 78.5 | 42.0 | 27.0 | 1 | ATEX/IECEX/EAC/cCSAus/ INMETRO/NEPSI/CCC/UKEX |
| RX741434 | BBA8618YXN | RX741439 | BBE8618Y | | NPT 3 1/2" | M75x1.5 | 110.0 | - | 43.2 | 8.5 | 1 | ATEX/IECEX/EAC/cCSAus/ INMETRO/NEPSI/CCC/UKEX |
| RX741454 | ABA8682YXN | RX741459 | ABE8682Y | | NPT 3 1/2" | M100x2.0 | 105.0 | 90.0 | 43.2 | 27.0 | 1 | ATEX/IECEX/EAC/cCSAus/ INMETRO/NEPSI/CCC/UKEX |
| a.A./o.R. | BBA8781YXN | a.A./o.R. | BBE8781Y | | NPT 4" | M90x2.0 | 120.0 | - | 44.5 | 10.0 | 1 | ATEX/IECEX/EAC/cCSAus/ INMETRO/NEPSI/CCC/UKEX |

Weitere Größen/Gewindekombinationen auf Anfrage. / Further sizes/thread combination on request.

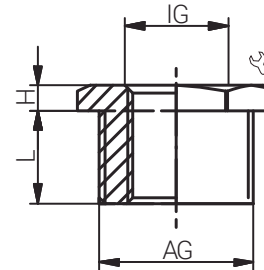
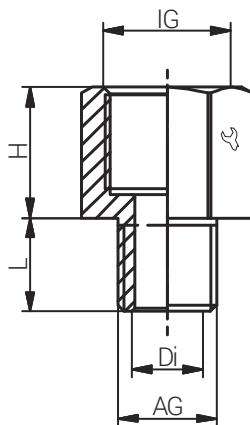
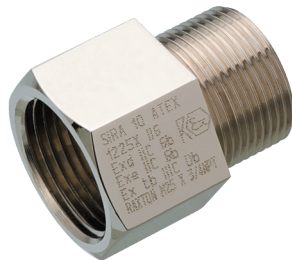
Weitere Produkte des Herstellers auf Anfrage. / Further products of the manufacturer on request.

| | |
|-----------|--|
| Material | Messing, blank; Messing, vernickelt; Edelstahl 1.4404 (Weitere auf Anfrage) |
| Schutzart | IP66 / IP68 |

| | |
|------------------|--|
| Material | Natural Brass; Nickel Plated Brass; Stainless Steel 316L (Further on Request) |
| Protection Class | IP66 / IP68 |

Für besondere Bedingungen oder Einschränkungen siehe entsprechende Produktdokumentation.

For specific conditions or limitations please see relevant product documentation.



Zubehör

Accessories



ERWEITERUNG & REDU-
ZIERUNGEN / NPT x NPT
ENLARGER & REDUCER
NPT x NPT

Produktdokumentation
Product Documentation



RST Rabe-System-Technik und Vertriebs-GmbH
Otto-Lilienthal-Strasse 19
49134 Wallenhorst
DEUTSCHLAND

+49 5407 8766-0
+49 5407 8766-99
info@rst.eu
www.rst.eu

| Artikelnummer RST Article Code RST | Herstellernummer Manufacturer Code | Artikelnummer RST Article Code RST | Herstellernummer Manufacturer Code | Hersteller Manufacturer | Gewinde Entry Thread | |  | Di (mm) | L (mm) | H (mm) | VPE PU | Zulassungen Approvals |
|---------------------------------------|---------------------------------------|---------------------------------------|---------------------------------------|---|-------------------------|-------------|---|------------|-----------|-----------|-----------|---|
| | | | | | AG / Male | IG / Female | | | | | | |
| RX745134 | ABA4243YXN | RX745139 | ABE4243Y |  | NPT 1/2" | NPT 3/4" | 30.5 | 14.0 | 20.2 | 21.0 | 1 | ATEX/IECEX/EAC/cCSAus/ INMETRO/NEPSI/CCC/UKEX |
| RX744884 | BBA4342YXN | RX744889 | BBE4342Y | | NPT 3/4" | NPT 1/2" | 27.9 | - | 20.5 | 4.0 | 1 | ATEX/IECEX/EAC/cCSAus/ INMETRO/NEPSI/CCC/UKEX |
| RX745404 | ABA4344YXN | RX745409 | ABE4344Y | | NPT 3/4" | NPT 1" | 37.6 | 19.2 | 20.5 | 27.0 | 1 | ATEX/IECEX/EAC/cCSAus/ INMETRO/NEPSI/CCC/UKEX |
| RX744894 | BBA4442YXN | RX744899 | BBE4442Y | | NPT 1" | NPT 1/2" | 37.6 | - | 25.3 | 5.0 | 1 | ATEX/IECEX/EAC/cCSAus/ INMETRO/NEPSI/CCC/UKEX |
| RX745154 | BBA4443YXN | RX745159 | BBE4443Y | | NPT 1" | NPT 3/4" | 37.6 | - | 25.3 | 5.0 | 1 | ATEX/IECEX/EAC/cCSAus/ INMETRO/NEPSI/CCC/UKEX |
| RX745674 | ABA4445YXN | RX745679 | ABE4445Y | | NPT 1" | NPT 1 1/4" | 47.2 | 26.0 | 25.3 | 26.5 | 1 | ATEX/IECEX/EAC/cCSAus/ INMETRO/NEPSI/CCC/UKEX |
| RX745164 | BBA4543YXN | RX745169 | BBE4543Y | | NPT 1 1/4" | NPT 3/4" | 47.2 | - | 26.0 | 5.0 | 1 | ATEX/IECEX/EAC/cCSAus/ INMETRO/NEPSI/CCC/UKEX |
| RX745424 | BBA4544YXN | RX745429 | BBE4544Y | | NPT 1 1/4" | NPT 1" | 47.2 | - | 26.0 | 5.0 | 1 | ATEX/IECEX/EAC/cCSAus/ INMETRO/NEPSI/CCC/UKEX |
| RX745944 | ABA4546YXN | RX745949 | ABE4546Y | | NPT 1 1/4" | NPT 1 1/2" | 55.9 | 34.0 | 26.0 | 28.5 | 1 | ATEX/IECEX/EAC/cCSAus/ INMETRO/NEPSI/CCC/UKEX |
| RX745434 | BBA4644YXN | RX745439 | BBE4644Y | | NPT 1 1/2" | NPT 1" | 56.4 | - | 26.5 | 6.0 | 1 | ATEX/IECEX/EAC/cCSAus/ INMETRO/NEPSI/CCC/UKEX |
| RX745694 | BBA4645YXN | RX745699 | BBE4645Y | | NPT 1 1/2" | NPT 1 1/4" | 56.4 | - | 26.5 | 6.0 | 1 | ATEX/IECEX/EAC/cCSAus/ INMETRO/NEPSI/CCC/UKEX |
| RX746214 | ABA4647YXN | RX746219 | ABE4647Y | | NPT 1 1/2" | NPT 2" | 70.1 | 41.0 | 26.5 | 29.0 | 1 | ATEX/IECEX/EAC/cCSAus/ INMETRO/NEPSI/CCC/UKEX |
| RX745444 | BBA4744YXN | RX745449 | BBE4744Y | | NPT 2" | NPT 1" | 70.1 | - | 27.2 | 6.0 | 1 | ATEX/IECEX/EAC/cCSAus/ INMETRO/NEPSI/CCC/UKEX |
| RX745704 | BBA4745YXN | RX745709 | BBE4745Y | | NPT 2" | NPT 1 1/4" | 70.1 | - | 27.2 | 6.0 | 1 | ATEX/IECEX/EAC/cCSAus/ INMETRO/NEPSI/CCC/UKEX |
| RX745964 | BBA4746YXN | RX745969 | BBE4746Y | | NPT 2" | NPT 1 1/2" | 70.1 | - | 27.2 | 6.0 | 1 | ATEX/IECEX/EAC/cCSAus/ INMETRO/NEPSI/CCC/UKEX |
| RX746484 | ABA4748YXN | RX746489 | ABE4748Y | | NPT 2" | NPT 2 1/2" | 80.0 | 54.0 | 27.2 | 40.0 | 1 | ATEX/IECEX/EAC/cCSAus/ INMETRO/NEPSI/CCC/UKEX |
| a.A. / o.R. | BBA4846YXN | a.A. / o.R. | BBE4846Y | | NPT 2 1/2" | NPT 1 1/2" | 80.0 | - | 40.5 | 6.5 | 1 | ATEX/IECEX/EAC/cCSAus/ INMETRO/NEPSI/CCC/UKEX |
| RX746234 | BBA4847YXN | RX746239 | BBE4847Y | | NPT 2 1/2" | NPT 2" | 80.0 | - | 40.5 | 6.5 | 1 | ATEX/IECEX/EAC/cCSAus/ INMETRO/NEPSI/CCC/UKEX |
| RX746754 | ABA4849YXN | RX746759 | ABE4849Y | | NPT 2 1/2" | NPT 3" | 105.0 | 64.5 | 40.5 | 41.0 | 1 | ATEX/IECEX/EAC/cCSAus/ INMETRO/NEPSI/CCC/UKEX |
| RX746244 | BBA4947YXN | RX746249 | BBE4947Y | | NPT 3" | NPT 2" | 89.0 | - | 42.0 | 8.0 | 1 | ATEX/IECEX/EAC/cCSAus/ INMETRO/NEPSI/CCC/UKEX |
| RX746504 | BBA4948YXN | RX746509 | BBE4948Y | | NPT 3" | NPT 2 1/2" | 89.0 | - | 42.0 | 8.0 | 1 | ATEX/IECEX/EAC/cCSAus/ INMETRO/NEPSI/CCC/UKEX |
| RX744634 | ABA4986YXN | RX744639 | ABE4986Y | | NPT 3" | NPT 3 1/2" | 120.0 | 79.0 | 42.0 | 43.0 | 1 | ATEX/IECEX/EAC/cCSAus/ INMETRO/NEPSI/CCC/UKEX |
| a.A. / o.R. | BBA8648YXN | a.A. / o.R. | BBE8648Y | | NPT 3 1/2" | NPT 2 1/2" | 110.0 | - | 43.2 | 8.5 | 1 | ATEX/IECEX/EAC/cCSAus/ INMETRO/NEPSI/CCC/UKEX |
| a.A. / o.R. | BBA8649YXN | a.A. / o.R. | BBE8649Y | | NPT 3 1/2" | NPT 3" | 110.0 | - | 43.2 | 8.5 | 1 | ATEX/IECEX/EAC/cCSAus/ INMETRO/NEPSI/CCC/UKEX |
| a.A. / o.R. | BBA8749YXN | a.A. / o.R. | BBE8749Y | | NPT 4" | NPT 3" | 120.0 | - | 44.5 | 10.0 | 1 | ATEX/IECEX/EAC/cCSAus/ INMETRO/NEPSI/CCC/UKEX |
| a.A. / o.R. | BBA8786YXN | a.A. / o.R. | BBE8786Y | | NPT 4" | NPT 3 1/2" | 120.0 | - | 44.5 | 10.0 | 1 | ATEX/IECEX/EAC/cCSAus/ INMETRO/NEPSI/CCC/UKEX |

Weitere Größen/Gewindekombinationen auf Anfrage. / Further sizes/thread combination on request.

Weitere Produkte des Herstellers auf Anfrage. / Further products of the manufacturer on request.