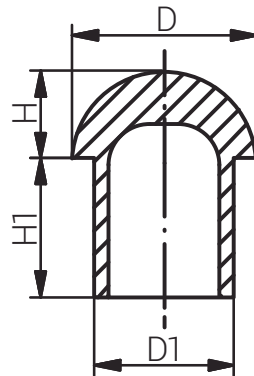


Material Polyamid 6
Einsatztemperatur -40°C bis +70°C

Material Polyamid 6
Operating Temperature -40°C to +70°C

Für besondere Bedingungen oder Einschränkungen siehe entsprechende Produktdokumentation.

For specific conditions or limitations please see relevant product documentation.



Zubehör
Accessories
BLINDSTOPFEN X3
PROTECTION TAB X3

Produktdokumentation
Product Documentation



RST Rabe-System-Technik und Vertriebs-GmbH
Otto-Lilienthal-Strasse 19
49134 Wallenhorst
DEUTSCHLAND

+49 5407 8766-0
+49 5407 8766-99
info@rst.eu
www.rst.eu

Artikelnummer RST Article Code RST	Hersteller- nummer Manufacturer Code	Hersteller Manufacturer	kompatibel mit Klemmbereich Compatible with Clamping Range (mm)			D1 (mm)	D (mm)	H1 (mm)	H (mm)	VPE * PU *	Zulassungen Approvals
			Standard Standard	Doppel- dichtung (innen) Double Seal (inner part)	Doppel- dichtung (außen) Double Seal (outer part)						
RAL 9005											
82007512X3DS	BDPX-09-21	bimed		3-4		4.0	9.2	12.0	4.0	100	ATEX / IECEx / EAC / INMETRO / DNV-GL
82007512X3	BDPX-09-22		4-6.5		4-6.5	6.4	9.2	12.0	4.0	100	ATEX / IECEx / EAC / INMETRO / DNV-GL
82007516X3DS	BDPX-11-21			4-5		5.0	10.5	14.0	5.0	50	ATEX / IECEx / EAC / INMETRO / DNV-GL
82007516X3	BDPX-11-22		5-8		5-8	8.0	10.5	13.7	4.7	50	ATEX / IECEx / EAC / INMETRO / DNV-GL
82007517X3DS	BDPX-13-21			4-6		7.0	13.3	15.0	5.7	50	ATEX / IECEx / EAC / INMETRO / DNV-GL
82007517X315	BDPX-13-22S		6-10		6-10	9.7	13.3	15.0	5.7	50	ATEX / IECEx / EAC / INMETRO / DNV-GL
82007520X3DS	BDPX-16-21			6-7.5		8.5	15.8	13.0	7.7	50	ATEX / IECEx / EAC / INMETRO / DNV-GL
82007520X3	BDPX-16-22		7-12		7.5-12	12.0	15.8	13.0	8.0	50	ATEX / IECEx / EAC / INMETRO / DNV-GL
82007519X3DS	BDPX-16-20			4-7		7.0	15.8	14.0	7.5	50	ATEX / IECEx / EAC / INMETRO / DNV-GL
82007523X3DS	BDPX-16-23		7-13		7-13	13.0	15.8	14.0	7.5	50	ATEX / IECEx / EAC / INMETRO / DNV-GL
82007522X3DS	BDPX-18-21			8-11		11.0	18.0	13.5	8.5	50	ATEX / IECEx / EAC / INMETRO / DNV-GL
82007522X3	BDPX-18-22		11-14		11-14	13.6	18.0	13.5	8.7	50	ATEX / IECEx / EAC / INMETRO / DNV-GL
82007525X3DS	BDPX-20-21			9-13		13.0	20.0	14.5	7.0	50	ATEX / IECEx / EAC / INMETRO / DNV-GL
82007525X3	BDPX-20-22		12-17		13-17	16.4	19.9	14.5	7.3	50	ATEX / IECEx / EAC / INMETRO / DNV-GL
82007526X3DS	BDPX-22-21			10-13		14.0	22.0	14.0	9.5	25	ATEX / IECEx / EAC / INMETRO / DNV-GL
82007526X3	BDPX-22-22		14-18		13-18	17.8	22.0	14.0	10.0	25	ATEX / IECEx / EAC / INMETRO / DNV-GL
82007532X3DS	BDPX-24-21			12-16		16.1	24.0	15.5	9.0	25	ATEX / IECEx / EAC / INMETRO / DNV-GL
82007532X3	BDPX-24-22		16-21		16-21	20.4	24.1	15.5	9.2	25	ATEX / IECEx / EAC / INMETRO / DNV-GL
82007533X3DS	BDPX-29-21			14-20		19.7	28.5	15.0	9.7	25	ATEX / IECEx / EAC / INMETRO / DNV-GL
82007533X3	BDPX-29-22		19-25		20-25	25.0	28.5	15.0	9.7	25	ATEX / IECEx / EAC / INMETRO / DNV-GL
82007540X3DS	BDPX-32-21			17-21		20.5	31.5	15.8	9.2	10	ATEX / IECEx / EAC / INMETRO / DNV-GL
82007540X3	BDPX-32-22		20-28		21-28	27.3	31.5	15.8	9.2	10	ATEX / IECEx / EAC / INMETRO / DNV-GL
82007541X3DS	BDPX-37-21			21-25		25.7	36.8	17.0	10.7	10	ATEX / IECEx / EAC / INMETRO / DNV-GL
82007541X3	BDPX-37-22		23-32		25-32	31.8	36.8	17.0	10.7	10	ATEX / IECEx / EAC / INMETRO / DNV-GL
82007550X3DS	BDPX-45-21			22-31		30.6	43.3	20.2	11.9	10	ATEX / IECEx / EAC / INMETRO / DNV-GL
82007550X3	BDPX-45-22		31-38		31-38	38.0	43.3	20.2	11.9	10	ATEX / IECEx / EAC / INMETRO / DNV-GL
82007563X3DS	BDPX-52-21			28-35		34.6	51.0	22.5	16.0	10	ATEX / IECEx / EAC / INMETRO / DNV-GL
82007563X3	BDPX-52-22		35-44		35-44	44.2	51.0	22.5	16.0	10	ATEX / IECEx / EAC / INMETRO / DNV-GL

Weitere Produkte des Herstellers auf Anfrage. / Further products of the manufacturer on request.

* Mindestbestellmenge (MOQ) kann größer sein als Verpackungseinheit (VPE). / * Minimum order quantity (MOQ) can be larger than packaging unit (PU).