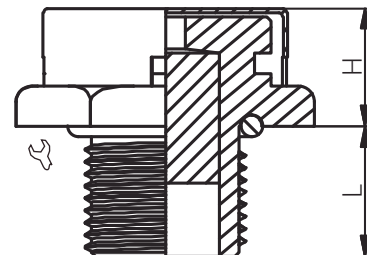
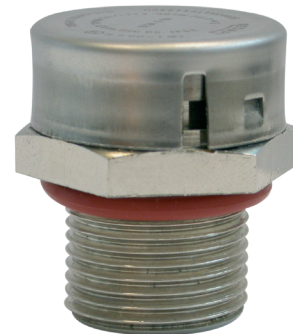


Material  
 O-Ring  
 Einsatztemperatur  
 Schutzart  
 ATEX-Kennzeichnung

Messing, vernickelt; Messing, blank; Edelstahl  
 Edelstahl 1.4404  
 Silikon  
 Metrisch (mit O-Ring): -60°C bis +180°C  
 NPT (ohne O-Ring): -60°C bis +200°C  
 IP66  
 Ex II 2 GD / Ex e IIC Gb / Ex tb IIIC Db  
 Ex I M2 / Ex e I/II Mb GB / Ex tb IIIC Db

Material  
 O-Ring  
 Operating Temperature  
 Protection Class  
 ATEX Marking

Nickel Plated Brass; Natural Brass;  
 Stainless steel 316L  
 Silicone  
 Metric (with O-Ring): -60°C to +180°C  
 NPT (without O-Ring): -60°C to +200°C  
 IP66  
 Ex II 2 GD / Ex e IIC Gb / Ex tb IIIC Db  
 Ex I M2 / Ex e I/II Mb GB / Ex tb IIIC Db




Druckausgleichs-  
 lösungen  
*Pressure Equalisation  
 Solutions*  
 BDU / M / NPT

Produktdokumentation  
*Product Documentation*



RST Rabe-System-Technik und Vertriebs-GmbH  
 Otto-Lilienthal-Strasse 19  
 49134 Wallenhorst  
 DEUTSCHLAND  
 +49 5407 8766-0  
 +49 5407 8766-99  
 info@rst.eu  
 www.rst.eu

Artikelnummer RST <i>Article Code RST</i>	Herstellernummer <i>Manufacturer Code</i>	Hersteller <i>Manufacturer</i>	Gewinde <i>Entry Thread</i>		L <i>(mm)</i>	H <i>(mm)</i>	VPE <i>PU</i>	Zulassungen <i>Approvals</i>	
			AG	(mm)	(mm)	(mm)			
<i>Messing, vernickelt / Nickel Plated Brass</i>									
75001521SI	BDU1104D1	<b>REDAPT</b>	M20x1.5	27.00	16.0	15.0	lose / loose	ATEX / IECEx / EAC / INMETRO	
75001526SI	BDU1105D1		M25x1.5	31.75	16.0	15.0	lose / loose	ATEX / IECEx / EAC / INMETRO	
75001013	BDU1129D0		NPT 1/2"	27.00	20.0	15.0	lose / loose	ATEX / IECEx / EAC / INMETRO	
75001035	BDU1130D0		NPT 3/4"	31.75	20.0	15.0	lose / loose	ATEX / IECEx / EAC / INMETRO	
<i>Messing / Brass</i>									
77001521SI	BDU1004D1		M20x1.5	27.00	16.0	15.0	lose / loose	ATEX / IECEx / EAC / INMETRO	
77001526SI	BDU1005D1		M25x1.5	31.75	16.0	15.0	lose / loose	ATEX / IECEx / EAC / INMETRO	
77001013	BDU1029D0		NPT 1/2"	27.00	20.0	15.0	lose / loose	ATEX / IECEx / EAC / INMETRO	
77001035	BDU1030D0		NPT 3/4"	31.75	20.0	15.0	lose / loose	ATEX / IECEx / EAC / INMETRO	
<i>Edelstahl 1.4404 / Stainless Steel 316L</i>									
76001521SI	BDU3004D1		M20x1.5	27.00	16.0	15.0	lose / loose	ATEX / IECEx / EAC / INMETRO	
76001526SI	BDU3005D1		M25x1.5	31.75	16.0	15.0	lose / loose	ATEX / IECEx / EAC / INMETRO	
76001013	BDU3029D0	NPT 1/2"	27.00	20.0	15.0	lose / loose	ATEX / IECEx / EAC / INMETRO		
76001035	BDU3030D0	NPT 3/4"	31.75	20.0	15.0	lose / loose	ATEX / IECEx / EAC / INMETRO		

Weitere Produkte des Herstellers auf Anfrage. / *Further products of the manufacturer on request.*



## Der RST-Druckausgleichsrechner

Berechnen Sie unkompliziert die für Ihre Anwendung sinnvolle Art und Anzahl an Druckausgleichslösungen.