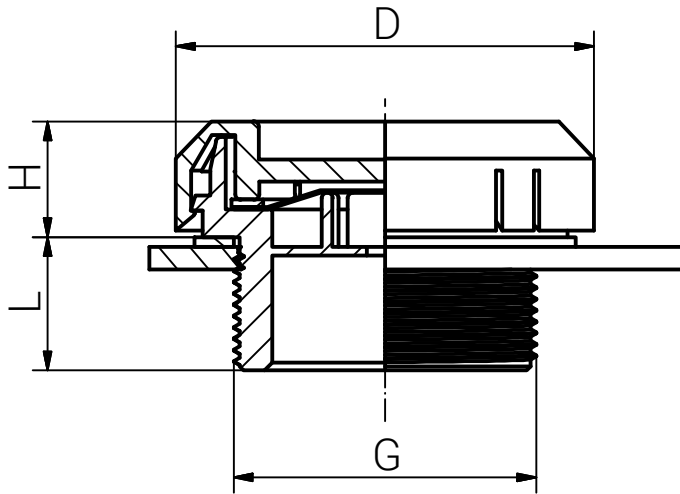
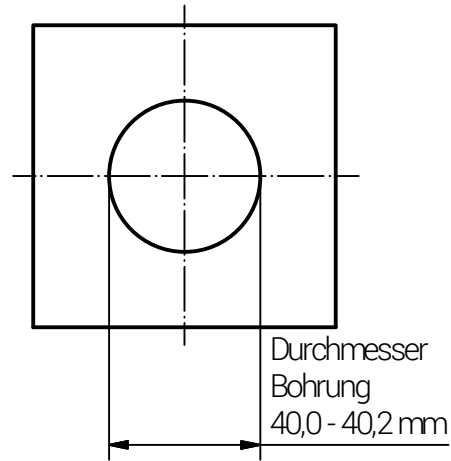
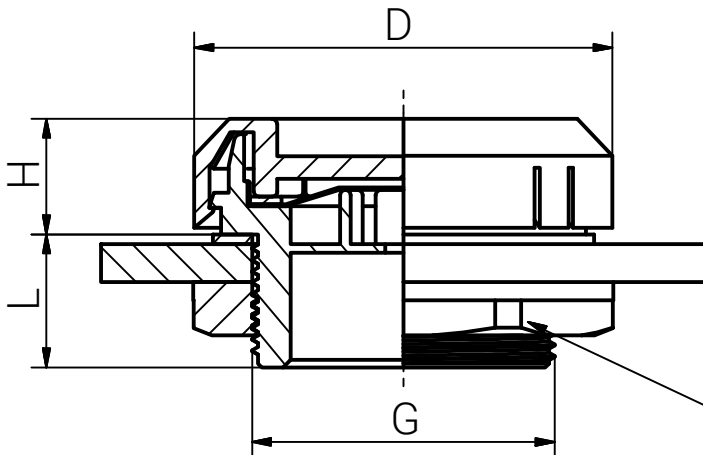


# Montageanleitung

Gewindebohrung  
mit Flachdichtung



Durchgangsbohrung  
mit Flachdichtung



Schritt	Montageschritt								
	1	Druckausgleichselement mit dem Anschlussgewinde am Gegenstück (z.B. Elektronikgehäuse) montieren und soweit anziehen, dass die Flachdichtung ihre Funktion erfüllt. Zu festes Anziehen kann zu Beschädigungen führen. Das Druckausgleichselement sollte seitlich montiert werden.							
		Artikel		Membrantyp	Gewinde	D	L	H	Anzugsdrehmoment (Nm) ADM
		RAL7035	RAL9005	H	G	(mm)	(mm)	(mm)	Toleranz ±0,5
		11087540HLD	13087540HLD		M40x1,5	55,3	18,0	15,5	5,0



RST Rabe-System-Technik und Vertriebs-GmbH  
Otto-Lilienthal-Strasse 19  
49134 Wallenhorst  
☎ +49 5407 8766-0  
☎ +49 5407 8766-99  
✉ info@rst.eu

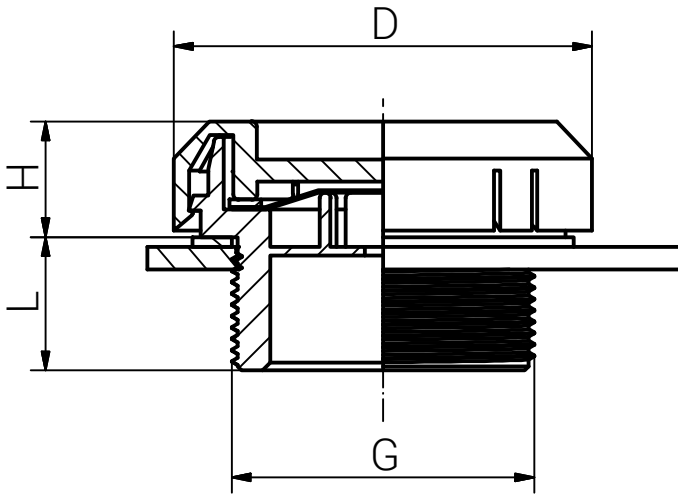
Unless otherwise specified on the drawing:  
Metric Thread = EN 60423  
PG Thread = DIN 40430  
NPT Thread = ANSI B1.20.1  
Tolerance: DIN ISO 2768-m  
All dimensions in mm

Abusive use, in particular reproduction and dissemination to third parties is not permitted. You can be punished by civil law. Technical changes are reserved.

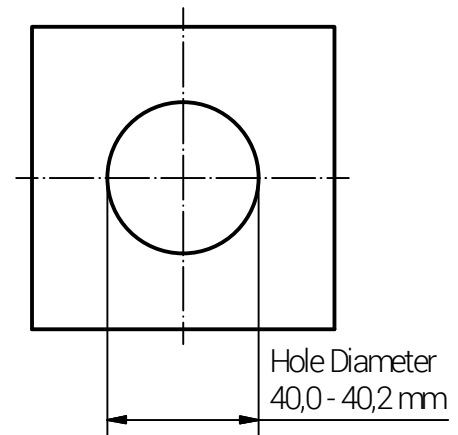
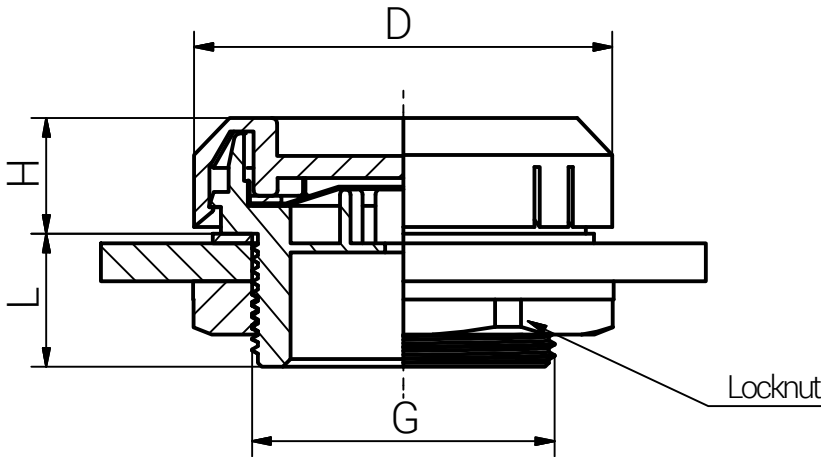
				Date	Name	<h2>UL-Druckausgleichselement Kunststoff M 40x1,5</h2>				
				Draw.	09.06.2020					SL
				Appr.	09.06.2020					KH
				Norm						1:1/1:2
				Scale:						
				Material:		Polycarbonat		Drawing-Nr.: <b>1x087540HLD_SZM_TD_German</b>	1 of 1 A4	
A	Text	09.11.2020	SL							
Status	Modification	Date	Name	Z:\Inventor\Montageanleitung\Druckausgleichselemente\UL-DAE_Kunststoff\M_1x087540HLD\DAE-01-1-BG-0001-1x087540HLD_SZM_TD_German.idw						
									V4	

# Mounting Instruction

## Threaded Enclosure Flat Washer Application



## Non Threaded Enclosure Flat Washer Application



### Step Assembly Steps

1 Mount the pressure balance element with the connection thread on the counterpart (e.g. electronic enclosure) and tighten until the washer fulfills its function. Over tightening may cause damage.

The pressure equalization element should be mounted laterally.

Article	Type of membrane	Thread	D (mm)	L (mm)	H (mm)	Tighting Torque (Nm) TT	
RAL7035	RAL9005	G	(mm)	(mm)	(mm)	Tolerances ±0,5	
11087540HLD	13087540HLD	H	M40x1,5	55,3	18,0	15,5	5,0



RST Rabe-System-Technik und Vertriebs-GmbH  
Otto-Lilienthal-Strasse 19  
49134 Wallenhorst  
☎ +49 5407 8766-0  
☎ +49 5407 8766-99  
✉ info@rst.eu

Unless otherwise specified on the drawing:  
Metric Thread = EN 60423  
PG Thread = DIN 40430  
NPT Thread = ANSI B1.20.1  
Tolerance: DIN ISO 2768-m  
All dimensions in mm

Abusively use, in particular reproduction and dissemination to third parties is not permitted. You can be punished by civil law. Technical changes are reserved.

			Date	Name
	Draw.		09.06.2020	SL
	Appr.		09.06.2020	KH
	Norm			1:1/1:2
	Scale:			
	Material:			Polycarbonate
A	Text	09.11.2020	SL	
Status	Modification	Date	Name	Z:\Inventor\Montageanleitung\Druckausgleichselemente\UL-DAE_Kunststoff\M_1x087540HLD\DAE-01-1-BG-0001-1x087540HLD_SZM_TD_Englsh.idw

## UL-Pressure Balance Elements Plastic M 40x1,5

Drawing-Nr.: 1x087540HLD\_SZM\_TD\_Englsh

1 of 1  
A4