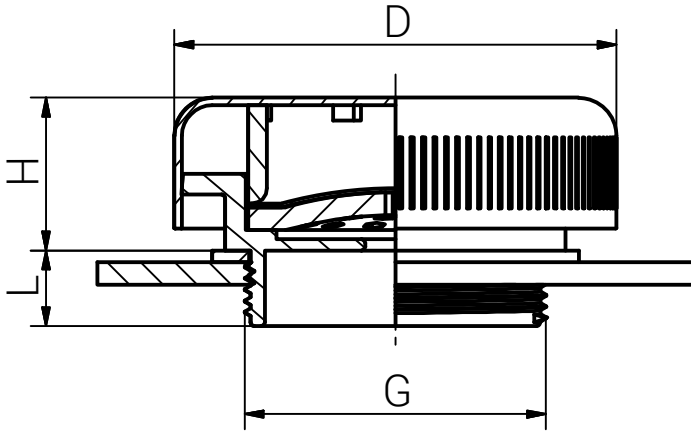
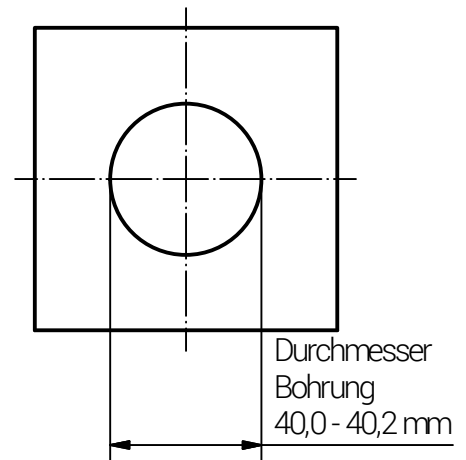
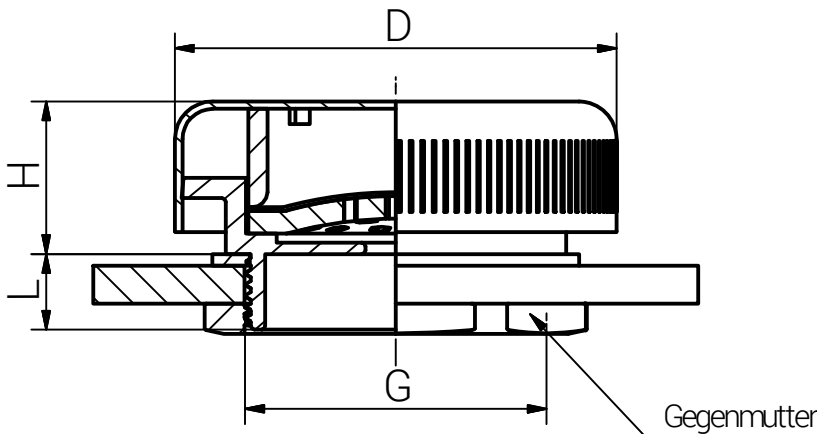


Montageanleitung

Gewindebohrung mit Flachdichtung



Durchgangsbohrung mit Flachdichtung



Schritt	Montageschritt
1	Druckausgleichselement mit dem Anschlussgewinde am Gegenstück (z.B. Elektronikgehäuse) montieren und so weit anziehen, dass die Flachdichtung ihre Funktion erfüllt. Zu festes Anziehen kann zu Beschädigungen führen.

Das Druckausgleichselement sollte seitlich montiert werden.

Artikel	Membrantyp	Gewinde	D (mm)	L (mm)	H (mm)	Anzugsdrehmoment (Nm) ADM Toleranz ±0,5
90000540	H	M40x1,5	58,0	10,0	20,7	6,5



RST Rabe-System-Technik und Vertriebs-GmbH
 Otto-Lilienthal-Strasse 19
 49134 Wallenhorst
 ☎ +49 5407 8766-0
 ☎ +49 5407 8766-99
 ✉ info@rst.eu

Unless otherwise specified on the drawing:
 Metric Thread = EN 60423
 PG Thread = DIN 40430
 NPT Thread = ANSI B1.20.1
 Tolerance: DIN ISO 2768-m
 All dimensions in mm

Abusively use, in particular reproduction and dissemination to third parties is not permitted. You can be punished by civil law. Technical changes are reserved.

				Date	Name
				13.05.2020	SL
				13.05.2020	KH
					1:1/1:2
					Scale:
					Material:
					Edelstahl 1.4305
B	Anzugsdrehmoment	10.05.2021	SL		
A	Text	09.11.2020	SL		
Status	Modification	Date	Name	Z:\inventor\Montageanleitung\Druckausgleichselemente\DAE_Edelstahl_M_90000540\DAE-01-1-BG-0001-90000540_SZM_TD_German.idw	

Druckausgleichselement Edelstahl M40x1,5

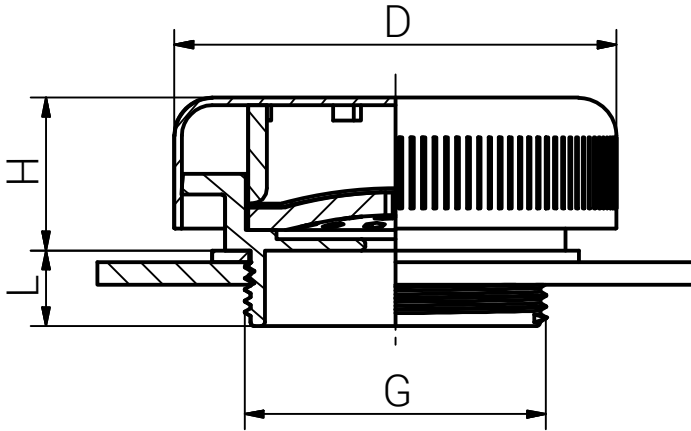
Drawing-Nr.: 90000540_SZM_TD_German

1 of 1
A4

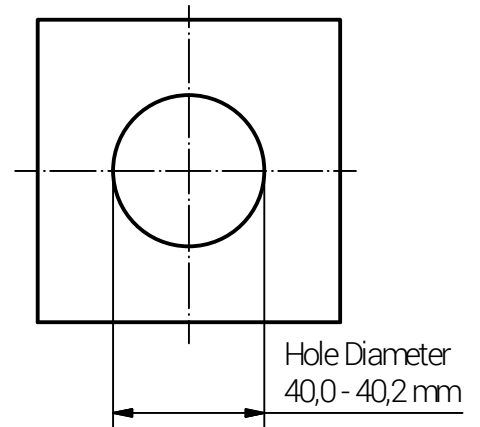
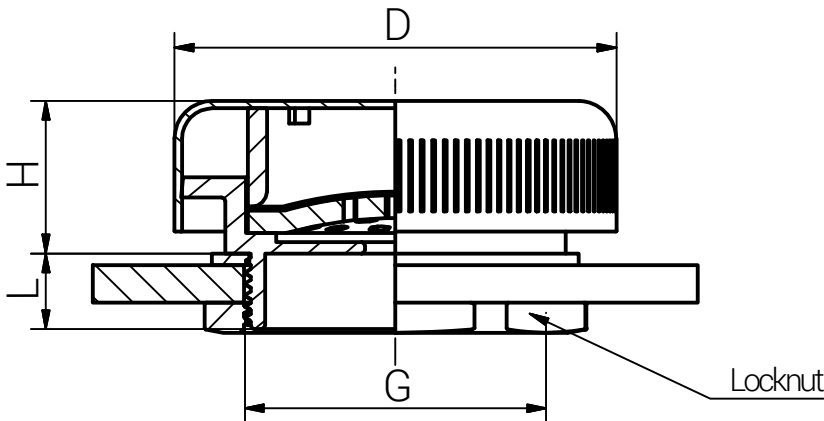
V6

Mounting Instruction

Threaded Enclosure Flat Washer Application




Non Threaded Enclosure Flat Washer Application



Step	Assembly Steps
1	Mount the pressure balance element with the connection thread on the counterpart (e.g. electronic enclosure) and tighten until the washer fulfills its function. Over tightening may cause damage.

The pressure equalization element should be mounted laterally.

Article	Type of membrane	Thread	D (mm)	L (mm)	H (mm)	Tightening Torque (Nm) TT
90000540	H	M40x1,5	58,0	10,0	20,7	6,5

 <small>connected by competence</small>	RST Pabe-System-Technik und Vertriebs-GmbH Otto-Lilienthal-Strasse 19 49134 Wallenhorst ☎ +49 5407 8766-0 ☎ +49 5407 8766-99 ✉ info@rst.eu	Unless otherwise specified on the drawing: Metric Thread = EN 60423 PG Thread = DIN 40430 NPT Thread = ANSI B1.20.1 Tolerance: DIN ISO 2768-m All dimensions in mm	Abusively use, in particular reproduction and dissemination to third parties is not permitted. You can be punished by civil law. Technical changes are reserved.
--	---	---	--

				Date	Name
			Draw.	13.05.2020	SL
			Appr.	13.05.2020	KH
			Norm		1:1/1:2
			Scale:		
			Material:		
					Stainless Steel 303

<h2 style="margin: 0;">Pressure Balance Elements Stainless Steel M 40x1,5</h2>
Drawing-Nr.: 90000540_SZM_TD_Englisch
1 of 1 A4 V8

Please note that the above representation is just a dimension illustration.