

Montageanleitung

Schritt 3

Schritt 4

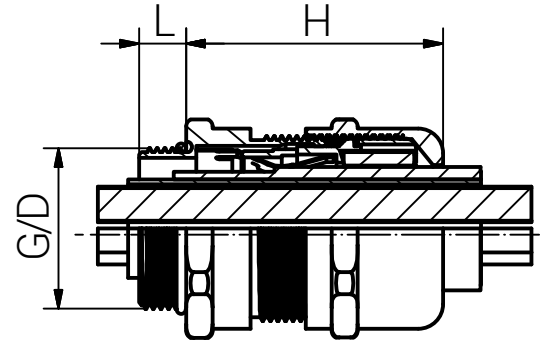
Schritt 1

Schritt 2


Schritt 5

SW 1 / ADM

SW 2 / ADM



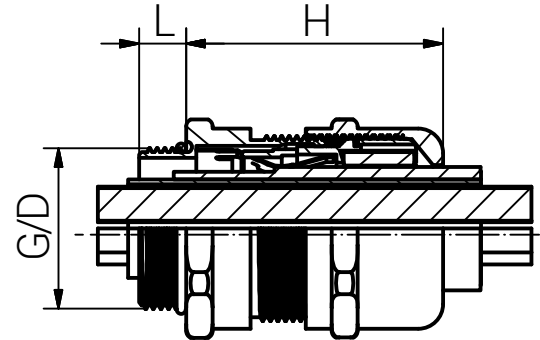
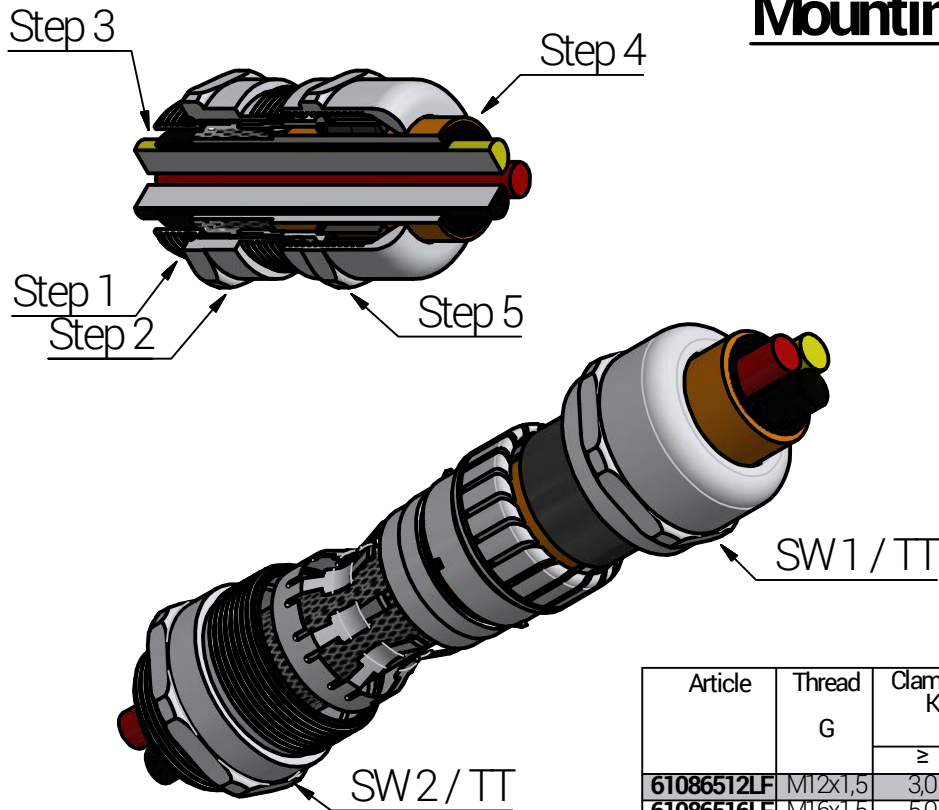
Artikel	Gewinde G	Klemmbereich KB (mm)		Klemmbereich Schirm (mm)		SW1 (mm)	SW2 (mm)	L (mm)	H max. (mm)	D (mm)	Durchgangs- bohrung (mm)	Anzugsdreh- moment (Nm) ADM		Kategorie der Schlagein- wirkung
		≥	≤	≥	≤							Hutmutter	Stutzen	
61086512LF	M12x1,5	3,0	6,5	2,0	5,0	14	14	6,0	30,0	12,0	12 (0/+0,2)	5,0	5,0	2
61086516LF	M16x1,5	5,0	10,0	3,5	8,0	20	20	6,0	35,0	16,0	16 (0/+0,2)	6,0	6,0	2
61086522LF	M20x1,5	7,5	14,0	5,5	11,5	24	24	8,0	41,5	20,0	20 (0/+0,2)	10,0	6,0	-
61086525LF	M25x1,5	10,0	18,0	7,0	14,0	30	30	8,0	44,5	25,0	25 (0/+0,2)	15,0	6,0	4
61086532LF	M32x1,5	16,0	25,0	12,0	20,0	40	40	9,0	55,0	32,0	32 (0/+0,2)	22,0	6,0	4
61086540LF	M40x1,5	22,0	32,0	18,0	27,0	50	50	9,0	62,5	40,0	40 (0/+0,2)	42,0	12,0	4
61086550LF	M50x1,5	30,0	38,0	26,0	34,0	58	58	9,0	74,0	50,0	50 (0/+0,2)	42,0	18,0	4
61086563LF	M63x1,5	34,0	44,0	30,0	40,0	64	68	14,0	60,0	63,0	63 (0/+0,2)	43,0	25,0	4

 <p>connected by competence</p>	RST Rabe-System-Technik und Vertriebs-GmbH Otto-Lilienthal-Strasse 19 49134 Wallenhorst ☎ +49 5407 8766-0 ☎ +49 5407 8766-99 ✉ info@rst.eu	Unless otherwise specified on the drawing: Metric Thread = EN 60423 PG Thread = DIN 40430 NPT Thread = ANSI B1.20.1 Tolerance: DIN ISO 2768-m All dimensions in mm.	Abusively use, in particular reproduction and dissemination to third parties is not permitted. You can be punished by civil law. Technical changes are reserved.

Euro-Top EMV LF Metrisch (4. Generation)	Drawing-Nr.: 610865xxLF_SZM_TD_German	1 of 1		
			A4	
IP-Schutzart ist IP 68 (5 bar / 30 min.).		V24		
Status	Modification	Date	Name	Z:\Inventor\Montageanleitung\Euro-Top-EMV-4.Generation-bleifrei\Euro-Top-EMV-04-1-BT-0001-610865xxLF_SZM_TD_German.idw

Bitte beachten Sie, dass es sich bei der o.a. Darstellung nur um ein Maßbild handelt.

Mounting Instruction



Article	Thread G	Clamping Range KB (mm)		Shield Diameter (mm)		SW1 (mm)	SW2 (mm)	L (mm)	H max. (mm)	D (mm)	Non Threaded Enclosure (mm)	Tightening Torque (Nm) TT		Impact Category
		≥	≤	≥	≤							Cap	Body	
61086512LF	M12x1,5	3,0	6,5	2,0	5,0	14	14	6,0	30,0	12,0	12 (0/+0,2)	5,0	5,0	2
61086516LF	M16x1,5	5,0	10,0	3,5	8,0	20	20	6,0	35,0	16,0	16 (0/+0,2)	6,0	6,0	2
61086522LF	M20x1,5	7,5	14,0	5,5	11,5	24	24	8,0	41,5	20,0	20 (0/+0,2)	10,0	6,0	-
61086525LF	M25x1,5	10,0	18,0	7,0	14,0	30	30	8,0	44,5	25,0	25 (0/+0,2)	15,0	6,0	4
61086532LF	M32x1,5	16,0	25,0	12,0	20,0	40	40	9,0	55,0	32,0	32 (0/+0,2)	22,0	6,0	4
61086540LF	M40x1,5	22,0	32,0	18,0	27,0	50	50	9,0	62,5	40,0	40 (0/+0,2)	42,0	12,0	4
61086550LF	M50x1,5	30,0	38,0	26,0	34,0	58	58	9,0	74,0	50,0	50 (0/+0,2)	42,0	18,0	4
61086563LF	M63x1,5	34,0	44,0	30,0	40,0	64	68	14,0	60,0	63,0	63 (0/+0,2)	43,0	25,0	4

Step	Assembly Steps (The installation should only be done by a qualified Electricians who are trained in the installation of cable glands.)
1	Mount the cable gland with the connection thread on the counterpart (e.g. electronic enclosure).
2	Tighten the body until the O-Ring fulfills its function. The guiding value is the TT mentioned in the table. Over tightening may cause damage.
3	Prepare the cable (dismantle) and pass it through the cable gland so that the EMC element of the cable gland and the shielding of the cable can be contacted.
4	Tighten the cap until the seal fulfills its function and that the EMC element and the shielding are in contact. Over tightening may cause damage.
Diameter of the mounting hole: - Threaded hole according to EN 60423 - Through hole see table.	
Type of cable anchorage according to EN62444:2013 - Clamping range 3-4mm = cable retention - Balance = Category A	
Degree of protection: IP 68 (5 bar / 30 min.).	



RST Rabe-System-Technik und Vertriebs-GmbH
 Otto-Lilienthal-Strasse 19
 49134 Wallenhorst
 ☎ +49 5407 8766-0
 ☎ +49 5407 8766-99
 ✉ info@rst.eu

Unless otherwise specified on the drawing:
 Metric Thread = EN 60423
 PG Thread = DIN 40430
 NPT Thread = ANSI B1.20.1
 Tolerance: DIN ISO 2768-m
 All dimensions in mm.

Abusively use, in particular reproduction and dissemination to third parties is not permitted. You can be punished by civil law. Technical changes are reserved.

Date		Name	
Draw.	29.04.2021	SL	
Appr.	29.04.2021	KH	
Norm			
Scale:		1:1,5	
Material:		Nickel Plated Brass (lead free) CuZn42	
Status	Modification	Date	Name

Euro-Top EMC LF Metric (4th Generation)	
Drawing-Nr.:	610865xxLF_SZM_TD_English
1	of 1
A4	
V75	

Please note that the above representation is just a dimension illustration.