

Material	Messing, blank; Messing, vern.; Edelstahl 1.4404 (Weitere auf Anfrage)
Gewinde	Metrisch nach EN 60423
Schutzart	IP66 / IP68
ATEX-Kennzeichnung	Ex II2 GD / Ex d IIC Gb / Ex e IIC GB Ex tb IIIC Db Ex I M2 / Ex d I Mb / Ex e I Mb
Hinweis	Für das Adaptieren von Gewindearten und -größen.

Material	Natural Brass; Nickel Plated Brass; Stainless Steel 316L (Further on Request)
Thread	Metric acc. to EN 60423
Protection Class	IP66 / IP68
ATEX Marking	Ex II2 GD / Ex d IIC Gb / Ex e IIC GB Ex tb IIIC Db Ex I M2 / Ex d I Mb / Ex e I Mb
Note	For adapting thread types and sizes.

Für besondere Bedingungen oder Einschränkungen siehe entsprechende Produktdokumentation.

For specific conditions or limitations please see relevant product documentation.

Zulassungen / Approvals

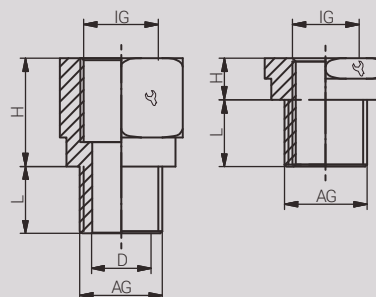
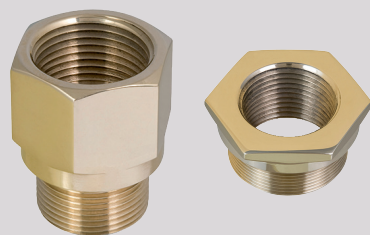


SIRA10ATEX1225X IECExSIR07.0010X TC RU C-GB.F506.B.00105 200455-1003277 NCC 12.0764X GYJ13.1314X

* abweichende Artikelnummer /
* variant article number

Artikel- Nummer RST Article Code RST	Hersteller- Nummer Manufacturer Code	Artikel- Nummer RST Article Code RST	Hersteller- Nummer Manufacturer Code	Hersteller Manufacturer	Gewinde Entry Thread			D (mm)	L (mm)	H (mm)	VPE PU
					AG / Male	IG / Female					
Messing vern. NP Brass	Messing vern. NP Brass	Edelstahl Stainless Steel	Edelstahl Stainless Steel		M 16 x 1.5	M 12 x 1.5	19.0	-	15.0	3.5	1
RX745834	BBA1104YXN	RX745839	BBE1104Y		M 16 x 1.5	M 20 x 1.5	24.0	10.4	15.0	21.0	1
RX740274	ABA1112YXN	RX740279	ABE1112Y		M 20 x 1.5	M 12 x 1.5	24.0	-	15.0	4.0	1
RX745844	BBA1204YXN	RX745849	BBE1204Y		M 20 x 1.5	M 16 x 1.5	24.0	-	15.0	4.0	1
RX740024	BBA1211YXN	RX740029	BBE1211Y		M 20 x 1.5	M 25 x 1.5	30.5	14.4	15.0	21.0	1
RX740544	ABA1213YXN	RX740549	ABE1213Y		M 20 x 1.5	M 16 x 1.5	28.0	-	15.0	4.0	1
RX740034	BBA1311YXN	RX740039	BBE1311Y		M 25 x 1.5	M 20 x 1.5	28.0	-	15.0	4.0	1
RX740294	BBA1312YXN	RX740299	BBE1312Y		M 25 x 1.5	M 32 x 1.5	37.5	19.4	15.0	22.0	1
RX740814	ABA1314YXN	RX740819	ABE1314Y		M 32 x 1.5	M 20 x 1.5	37.5	-	15.0	4.0	1
RX740304	BBA1412YXN	RX740309	BBE1412Y		M 32 x 1.5	M 25 x 1.5	37.5	-	15.0	4.0	1
RX740564	BBA1413YXN	RX740569	BBE1413Y		M 32 x 1.5	M 40 x 1.5	47.0	26.8	15.0	22.0	1
RX741084	ABA1415YXN	RX741089	ABE1415Y		M 40 x 1.5	M 25 x 1.5	47.0	-	15.0	5.0	1
RX740574	BBA1513YXN	RX740579	BBE1513Y		M 40 x 1.5	M 32 x 1.5	47.0	-	15.0	5.0	1
RX740834	BBA1514YXN	RX740839	BBE1514Y		M 40 x 1.5	M 50 x 1.5	56.0	33.5	15.0	22.0	1
RX741354	ABA1516YXN	RX741359	ABE1516Y		M 50 x 1.5	M 32 x 1.5	56.0	-	15.0	5.5	1
RX740844	BBA1614YXN	RX740849	BBE1614Y		M 50 x 1.5	M 40 x 1.5	56.0	-	15.0	5.5	1
RX741104	BBA1615YXN	RX741109	BBE1615Y		M 50 x 1.5	M 63 x 1.5	70.0	42.8	15.0	22.0	1
RX741624	ABA1617YXN	RX741629	ABE1617Y		M 63 x 1.5	M 40 x 1.5	70.0	-	15.0	6.0	1
RX741114	BBA1715YXN	RX741119	BBE1715Y		M 63 x 1.5	M 50 x 1.5	70.0	-	15.0	6.0	1
RX741374	BBA1716YXN	RX741379	BBE1716Y		M 63 x 1.5	M 75 x 1.5	80.0	54.4	15.0	22.0	1
RX741894	ABA1718YXN	RX741899	ABE1718Y		M 75 x 1.5	M 50 x 1.5	80.0	-	15.0	8.0	1
RX741384	BBA1816YXN	RX741389	BBE1816Y		M 75 x 1.5	M 63 x 1.5	80.0	-	15.0	8.0	1
RX741644	BBA1817YXN	RX741649	BBE1817Y		M 75 x 1.5	M 90 x 2.0	95.0	66.8	15.0	27.0	1
RX745394	ABA1881YXN	RX745399	ABE1881Y		M 90 x 2.0	M 63 x 1.5	95.0	-	20.0	9.0	1
RX745854	BBA8117YXN	RX745859	BBE8117Y		M 90 x 2.0	M 75 x 1.5	95.0	-	20.0	9.0	1
RX745864	BBA8118YXN	RX745869	BBE8118Y		M 90 x 2.0	M 100 x 2.0	105.0	80.5	20.0	27.0	1
RX745484	ABA8182YXN	RX745489	ABE8182Y	M 100 x 2.0	M 75 x 1.5	110.0	-	20.0	10.0	1	
a.A. / o.R.	BBA8218YXN	a.A. / o.R.	BBE8218Y	M 100 x 2.0	M 80 x 2.0	110.0	-	20.0	10.0	1	
a.A. / o.R.	BBA8280YXN	a.A. / o.R.	BBE8280Y								

Weitere Größen/Gewindekombinationen auf Anfrage. / Further sizes/thread combination on request.
Weitere Produkte des Herstellers auf Anfrage. / Further products of the manufacturer on request.



Material	Messing, blank; Messing, vern.; Edelstahl 1.4404 (Weitere auf Anfrage)
Gewinde	Metrisch nach EN 60423 NPT nach ANSI B1.20.1
Schutzart	IP66 / IP68
ATEX-Kennzeichnung	Ex II2 GD / Ex d IIC Gb / Ex e IIC GB Ex tb IIIC Db Ex I M2 / Ex d I Mb / Ex e I Mb
Hinweis	Für das Adaptieren von Gewindearten und -größen.

Material	Natural Brass; Nickel Plated Brass; Stainless Steel 316L (Further on Request)
Thread	Metric acc. to EN 60423 NPT acc. to ANSI B1.20.1
Protection Class	IP66 / IP68
ATEX Marking	Ex II2 GD / Ex d IIC Gb / Ex e IIC GB Ex tb IIIC Db Ex I M2 / Ex d I Mb / Ex e I Mb
Note	For adapting thread types and sizes.



Für besondere Bedingungen oder Einschränkungen siehe entsprechende Produktdokumentation.

For specific conditions or limitations please see relevant product documentation.

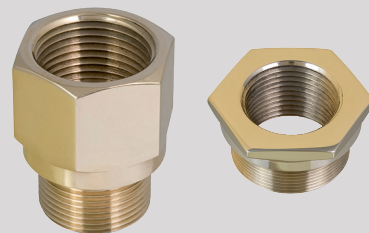
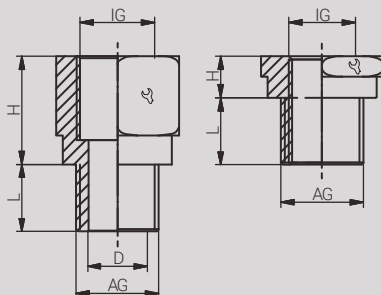
Zulassungen / Approvals



* abweichende Artikelnummer /
* variant article number

Artikel- Nummer RST Article Code RST	Hersteller- Nummer Manufacturer Code	Artikel- Nummer RST Article Code RST	Hersteller- Nummer Manufacturer Code	Hersteller Manufacturer	Gewinde Entry Thread			D (mm)	L (mm)	H (mm)	VPE PU
					AG / Male	IG / Female					
RX744694	ABA1142YXN	RX744699	ABE1142Y		M 16 x 1.5	NPT 1/2"	24.0	11.0	15.0	21.0	1
RX744704	BBA1242YXN	RX744709	BBE1242Y		M 20 x 1.5	NPT 1/2"	24.0	-	15.0	21.0	1
RX744964	ABA1243YXN	RX744969	ABE1243Y		M 20 x 1.5	NPT 3/4"	30.5	14.4	15.0	21.0	1
RX744714	BBA1342YXN	RX744719	BBE1342Y		M 25 x 1.5	NPT 1/2"	28.0	-	15.0	4.0	1
RX744974	BBA1343YXN	RX744979	BBE1343Y		M 25 x 1.5	NPT 3/4"	30.5	-	15.0	21.0	1
RX745234	ABA1344YXN	RX745239	ABE1344Y		M 25 x 1.5	NPT 1"	37.5	19.4	15.0	26.0	1
RX744724	BBA1442YXN	RX744729	BBE1442Y		M 32 x 1.5	NPT 1/2"	37.5	-	15.0	4.0	1
RX744984	BBA1443YXN	RX744989	BBE1443Y		M 32 x 1.5	NPT 3/4"	37.5	-	15.0	4.0	1
RX745244	BBA1444YXN	RX745249	BBE1444Y		M 32 x 1.5	NPT 1"	37.5	-	15.0	27.0	1
RX745504	ABA1445YXN	RX745509	ABE1445Y		M 32 x 1.5	NPT 1 1/4"	47.0	26.8	15.0	27.5	1
RX744994	BBA1543YXN	RX744999	BBE1543Y		M 40 x 1.5	NPT 3/4"	47.0	-	15.0	5.0	1
RX745254	BBA1544YXN	RX745259	BBE1544Y		M 40 x 1.5	NPT 1"	47.0	-	15.0	5.0	1
RX745514	BBA1545YXN	RX745519	BBE1545Y		M 40 x 1.5	NPT 1 1/4"	47.0	-	15.0	27.5	1
RX745774	ABA1546YXN	RX745779	ABE1546Y		M 40 x 1.5	NPT 1 1/2"	56.0	33.4	15.0	28.0	1
RX745264	BBA1644YXN	RX745269	BBE1644Y		M 50 x 1.5	NPT 1"	56.0	-	15.0	5.5	1
RX745524	BBA1645YXN	RX745529	BBE1645Y		M 50 x 1.5	NPT 1 1/4"	56.0	-	15.0	5.5	1
RX745784	BBA1646YXN	RX745789	BBE1646Y		M 50 x 1.5	NPT 1 1/2"	56.0	-	15.0	28.0	1
RX746044	ABA1647YXN	RX746049	ABE1647Y		M 50 x 1.5	NPT 2"	70.0	42.8	15.0	29.0	1
RX745274	BBA1744YXN	RX745279	BBE1744Y		M 63 x 1.5	NPT 1"	70.0	-	15.0	6.0	1
RX745534	BBA1745YXN	RX745539	BBE1745Y		M 63 x 1.5	NPT 1 1/4"	70.0	-	15.0	6.0	1
RX745794	BBA1746YXN	RX745799	BBE1746Y		M 63 x 1.5	NPT 1 1/2"	70.0	-	15.0	6.0	1
RX746054	BBA1747YXN	RX746059	BBE1747Y		M 63 x 1.5	NPT 2"	70.0	-	15.0	29.0	1
RX746314	ABA1748YXN	RX746319	ABE1748Y		M 63 x 1.5	NPT 2 1/2"	80.0	55.2	15.0	40.0	1
RX745804	BBA1846YXN	RX745809	BBE1846Y		M 75 x 1.5	NPT 1 1/2"	80.0	-	15.0	8.0	1
RX746064	BBA1847YXN	RX746069	BBE1847Y		M 75 x 1.5	NPT 2"	80.0	-	15.0	8.0	1
RX746324	BBA1848YXN	RX746329	BBE1848Y		M 75 x 1.5	NPT 2 1/2"	80.0	-	15.0	40.0	1
RX746584	ABA1849YXN	RX746589	ABE1849Y		M 75 x 1.5	NPT 3"	105.0	66.7	15.0	41.0	1
RX744284	BBA8147YXN	RX744289	BBE8147Y		M 90 x 2.0	NPT 2"	95.0	-	20.0	9.0	1
RX744294	BBA8148YXN	RX744299	BBE8148Y		M 90 x 2.0	NPT 2 1/2"	95.0	-	20.0	9.0	1
RX744304	ABA8149YXN	RX744309	ABE8149Y		M 90 x 2.0	NPT 3"	105.0	80.0	20.0	41.0	1
RX744314	ABA8186YXN	RX744319	ABE8186Y		M 90 x 2.0	NPT 3 1/2"	120.0	80.0	20.0	43.0	1
a.A. / o.R.	BBA8247YXN	a.A. / o.R.	BBE8247Y		M 100 x 2.0	NPT 2"	110.0	-	20.0	10.0	1
a.A. / o.R.	BBA8248YXN	a.A. / o.R.	BBE8248Y		M 100 x 2.0	NPT 2 1/2"	110.0	-	20.0	10.0	1
a.A. / o.R.	BBA8249YXN	a.A. / o.R.	BBE8249Y		M 100 x 2.0	NPT 3"	110.0	-	20.0	10.0	1
RX744434	ABA8286YXN	RX744439	ABE8286Y		M 100 x 2.0	NPT 3 1/2"	120.0	90.0	20.0	43.0	1
a.A. / o.R.	ABA8287YXN	a.A. / o.R.	ABE8287Y		M 100 x 2.0	NPT 4"	130.0	90.0	20.0	44.0	1

Weitere Größen/Gewindekombinationen auf Anfrage. / Further sizes/thread combination on request.
Weitere Produkte des Herstellers auf Anfrage. / Further products of the manufacturer on request.



Material	Messing, blank; Messing, vern.; Edelstahl 1.4404 (Weitere auf Anfrage)
Gewinde	Metrisch nach EN 60423 NPT nach ANSI B1.20.1
Schutzart	IP66 / IP68
ATEX-Kennzeichnung	Ex II2 GD / Ex d IIC Gb / Ex e IIC GB Ex tb IIIC Db Ex I M2 / Ex d I Mb / Ex e I Mb
Hinweis	Für das Adaptieren von Gewindearten und -größen.

Material	Natural Brass; Nickel Plated Brass; Stainless Steel 316L (Further on Request)
Thread	Metric acc. to EN 60423 NPT acc. to ANSI B1.20.1
Protection Class	IP66 / IP68
ATEX Marking	Ex II2 GD / Ex d IIC Gb / Ex e IIC GB Ex tb IIIC Db Ex I M2 / Ex d I Mb / Ex e I Mb
Note	For adapting thread types and sizes.

Für besondere Bedingungen oder Einschränkungen siehe entsprechende Produktdokumentation.

For specific conditions or limitations please see relevant product documentation.

Zulassungen / Approvals

ATEX



ERC*

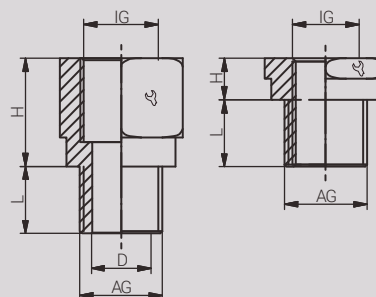
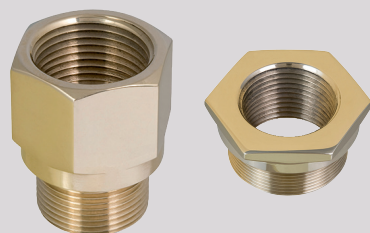


* abweichende Artikelnummer /
* variant article number

SIRA10ATEX1225X IECExSIR07.0010X TC RU C-GB.F506.B.00105 200455-1003277 NCC 12.0764X GYJ13.1314X

Artikel- Nummer RST Article Code RST	Hersteller- Nummer Manufacturer Code	Artikel- Nummer RST Article Code RST	Hersteller- Nummer Manufacturer Code	Hersteller Manufacturer	Gewinde Entry Thread			D (mm)	L (mm)	H (mm)	VPE PU				
					AG / Male	IG / Female									
Messing vern. NP Brass	Messing vern. NP Brass	Edelstahl Stainless Steel	Edelstahl Stainless Steel		NPT 1/2"	M 16 x 1.5	24.0	-	20.2	4.0	1				
RX740194	BBA4211YXN	RX740199	BBE4211Y		RX740454	ABA4212YXN	RX740459	ABE4212Y	NPT 1/2"	M 20 x 1.5	24.0	14.0	20.2	21.0	1
RX740714	ABA4213YXN	RX740719	ABE4213Y		RX740204	BBA4311YXN	RX740209	BBE4311Y	NPT 1/2"	M 25 x 1.5	30.5	14.0	20.2	21.0	1
RX740204	BBA4311YXN	RX740209	BBE4311Y		RX740464	BBA4312YXN	RX740469	BBE4312Y	NPT 3/4"	M 16 x 1.5	27.9	-	20.5	4.0	1
RX740464	BBA4312YXN	RX740469	BBE4312Y		RX740724	ABA4313YXN	RX740729	ABE4313Y	NPT 3/4"	M 20 x 1.5	27.9	-	20.5	4.0	1
RX740724	ABA4313YXN	RX740729	ABE4313Y		RX740984	ABA4314YXN	RX740989	ABE4314Y	NPT 3/4"	M 25 x 1.5	30.5	19.2	20.5	21.0	1
RX740984	ABA4314YXN	RX740989	ABE4314Y		RX740474	BBA4412YXN	RX740479	BBE4412Y	NPT 3/4"	M 32 x 1.5	37.6	19.2	20.5	21.0	1
RX740474	BBA4412YXN	RX740479	BBE4412Y		RX740734	BBA4413YXN	RX740739	BBE4413Y	NPT 1"	M 20 x 1.5	37.6	-	20.5	5.0	1
RX740734	BBA4413YXN	RX740739	BBE4413Y		RX740994	ABA4414YXN	RX740999	ABE4414Y	NPT 1"	M 25 x 1.5	37.6	-	25.3	5.0	1
RX740994	ABA4414YXN	RX740999	ABE4414Y		RX741254	ABA4415YXN	RX741259	ABE4415Y	NPT 1"	M 32 x 1.5	37.6	25.0	25.3	21.0	1
RX741254	ABA4415YXN	RX741259	ABE4415Y		RX740744	BBA4513YXN	RX740749	BBE4513Y	NPT 1"	M 40 x 1.5	47.2	25.0	25.3	22.0	1
RX740744	BBA4513YXN	RX740749	BBE4513Y		RX741004	BBA4514YXN	RX741009	BBE4514Y	NPT 1 1/4"	M 25 x 1.5	47.2	-	26.0	5.0	1
RX741004	BBA4514YXN	RX741009	BBE4514Y		RX741264	ABA4515YXN	RX741269	ABE4515Y	NPT 1 1/4"	M 32 x 1.5	47.2	-	26.0	5.0	1
RX741264	ABA4515YXN	RX741269	ABE4515Y		RX741524	ABA4516YXN	RX741529	ABE4516Y	NPT 1 1/4"	M 40 x 1.5	47.2	34.0	26.0	22.0	1
RX741524	ABA4516YXN	RX741529	ABE4516Y		RX741014	BBA4614YXN	RX741019	BBE4614Y	NPT 1 1/4"	M 50 x 1.5	55.9	34.0	26.0	22.0	1
RX741014	BBA4614YXN	RX741019	BBE4614Y		RX741274	BBA4615YXN	RX741279	BBE4615Y	NPT 1 1/2"	M 63 x 1.5	56.4	-	26.5	6.0	1
RX741274	BBA4615YXN	RX741279	BBE4615Y		RX741534	ABA4616YXN	RX741539	ABE4616Y	NPT 1 1/2"	M 40 x 1.5	56.4	-	26.5	6.0	1
RX741534	ABA4616YXN	RX741539	ABE4616Y		RX741794	ABA4617YXN	RX741799	ABE4617Y	NPT 1 1/2"	M 50 x 1.5	55.9	40.0	26.5	22.0	1
RX741794	ABA4617YXN	RX741799	ABE4617Y		RX741284	BBA4715YXN	RX741289	BBE4715Y	NPT 1 1/2"	M 63 x 1.5	70.1	40.0	26.5	22.0	1
RX741284	BBA4715YXN	RX741289	BBE4715Y		RX741544	ABA4716YXN	RX741549	ABE4716Y	NPT 2"	M 40 x 1.5	70.1	-	27.2	6.0	1
RX741544	ABA4716YXN	RX741549	ABE4716Y		RX741804	ABA4717YXN	RX741809	ABE4717Y	NPT 2"	M 50 x 1.5	70.1	-	27.2	6.0	1
RX741804	ABA4717YXN	RX741809	ABE4717Y		RX742064	ABA4718YXN	RX742069	ABE4718Y	NPT 2"	M 63 x 1.5	70.1	52.0	27.2	22.0	1
RX742064	ABA4718YXN	RX742069	ABE4718Y		RX741554	BBA4816YXN	RX741559	BBE4816Y	NPT 2"	M 75 x 1.5	80.0	52.0	27.2	22.0	1
RX741554	BBA4816YXN	RX741559	BBE4816Y		RX741814	BBA4817YXN	RX741819	BBE4817Y	NPT 2 1/2"	M 50 x 1.5	80.0	-	40.5	6.5	1
RX741814	BBA4817YXN	RX741819	BBE4817Y		RX742074	ABA4818YXN	RX742079	ABE4818Y	NPT 2 1/2"	M 63 x 1.5	80.0	-	40.5	6.5	1
RX742074	ABA4818YXN	RX742079	ABE4818Y		RX741154	ABA4881YXN	RX741159	ABE4881Y	NPT 2 1/2"	M 75 x 1.5	80.0	63.0	40.5	22.0	1
RX741154	ABA4881YXN	RX741159	ABE4881Y		RX741824	BBA4917YXN	RX741829	BBE4917Y	NPT 2 1/2"	M 90 x 2.0	95.0	63.0	40.5	27.0	1
RX741824	BBA4917YXN	RX741829	BBE4917Y		RX741314	ABA4982YXN	RX741319	ABE4982Y	NPT 3"	M 63 x 1.5	89.0	-	42.0	8.0	1
RX741314	ABA4982YXN	RX741319	ABE4982Y		RX742084	BBA4918YXN	RX742089	BBE4918Y	NPT 3"	M 75 x 1.5	89.0	-	42.0	8.0	1
RX742084	BBA4918YXN	RX742089	BBE4918Y		RX741244	ABA4981YXN	RX741249	ABE4981Y	NPT 3"	M 90 x 2.0	95.0	78.5	42.0	27.0	1
RX741244	ABA4981YXN	RX741249	ABE4981Y		RX741314	ABA4982YXN	RX741319	ABE4982Y	NPT 3"	M 100 x 2.0	105.0	78.5	42.0	27.0	1
RX741314	ABA4982YXN	RX741319	ABE4982Y		RX741434	BBA8618YXN	RX741439	BBE8618Y	NPT 3 1/2"	M 75 x 1.5	110.0	-	43.2	8.5	1
RX741434	BBA8618YXN	RX741439	BBE8618Y	RX741454	ABA8682YXN	RX741459	ABE8682Y	NPT 3 1/2"	M 90 x 2.0	105.0	90.0	43.2	27.0	1	
RX741454	ABA8682YXN	RX741459	ABE8682Y	a.A. / o.R.	BBA8781YXN	a.A. / o.R.	BBE8781Y	NPT 4"	M 90 x 2.0	120.0	-	44.5	10.0	1	

Weitere Größen/Gewindekombinationen auf Anfrage. / Further sizes/thread combination on request.
Weitere Produkte des Herstellers auf Anfrage. / Further products of the manufacturer on request.



Material	Messing, blank; Messing, vern.; Edelstahl 1.4404 (Weitere auf Anfrage)
Gewinde	NPT nach ANSI B1.20.1
Schutzart	IP66 / IP68
ATEX-Kennzeichnung	Ex II2 GD / Ex d IIC Gb / Ex e IIC GB Ex tb IIIC Db Ex I M2 / Ex d I Mb / Ex e I Mb
Hinweis	Für das Adaptieren von Gewindearten und -größen.

Material	Natural Brass; Nickel Plated Brass; Stainless Steel 316L (Further on Request)
Thread	NPT acc. to ANSI B1.20.1
Protection Class	IP66 / IP68
ATEX Marking	Ex II2 GD / Ex d IIC Gb / Ex e IIC GB Ex tb IIIC Db Ex I M2 / Ex d I Mb / Ex e I Mb
Note	For adapting thread types and sizes.

Für besondere Bedingungen oder Einschränkungen siehe entsprechende Produktdokumentation.

For specific conditions or limitations please see relevant product documentation.

Zulassungen / Approvals











SIRA10ATEX1225X IECExSIR07.0010X TC RU C-GB.F506.B.00105 200455-1003277 NCC 12.0764X GYJ13.1314X

* abweichende Artikelnummer /
* variant article number

Artikel- Nummer RST Article Code RST	Hersteller- Nummer Manufacturer Code	Artikel- Nummer RST Article Code RST	Hersteller- Nummer Manufacturer Code	Hersteller Manufacturer	Gewinde Entry Thread			D (mm)	L (mm)	H (mm)	VPE PU
					AG / Male	IG / Female					
Messing vern. NP Brass	Messing vern. NP Brass	Edelstahl Stainless Steel	Edelstahl Stainless Steel		AG / Male	IG / Female		D (mm)	L (mm)	H (mm)	VPE PU
RX745134	ABA4243YXN	RX745139	ABE4243Y		NPT 1/2"	NPT 3/4"	30.5	15.0	20.2	21.0	1
RX744884	BBA4342YXN	RX744889	BBE4342Y		NPT 3/4"	NPT 1/2"	27.9	-	20.5	4.0	1
RX745404	ABA4344YXN	RX745409	ABE4344Y		NPT 3/4"	NPT 1"	37.6	20.1	20.5	26.0	1
RX744894	BBA4442YXN	RX744899	BBE4442Y		NPT 1"	NPT 1/2"	37.6	-	25.3	5.0	1
RX745154	BBA4443YXN	RX745159	BBE4443Y		NPT 1"	NPT 3/4"	37.6	-	25.3	5.0	1
RX745674	ABA4445YXN	RX745679	ABE4445Y		NPT 1"	NPT 1 1/4"	47.2	26.0	25.3	26.5	1
RX745164	BBA4543YXN	RX745169	BBE4543Y		NPT 1 1/4"	NPT 3/4"	47.2	-	26.0	5.0	1
RX745424	BBA4544YXN	RX745429	BBE4544Y		NPT 1 1/4"	NPT 1"	47.2	-	26.0	5.0	1
RX745944	ABA4546YXN	RX745949	ABE4546Y		NPT 1 1/4"	NPT 1 1/2"	55.9	34.8	26.0	28.0	1
RX745434	BBA4644YXN	RX745439	BBE4644Y		NPT 1 1/2"	NPT 1"	56.4	-	26.5	6.0	1
RX745694	BBA4645YXN	RX745699	BBE4645Y		NPT 1 1/2"	NPT 1 1/4"	56.4	-	26.5	6.0	1
RX746214	ABA4647YXN	RX746219	ABE4647Y		NPT 1 1/2"	NPT 2"	70.1	40.8	26.5	29.0	1
RX745444	BBA4744YXN	RX745449	BBE4744Y		NPT 2"	NPT 1"	70.1	-	27.2	6.0	1
RX745704	BBA4745YXN	RX745709	BBE4745Y		NPT 2"	NPT 1 1/4"	70.1	-	27.2	6.0	1
RX745964	BBA4746YXN	RX745969	BBE4746Y		NPT 2"	NPT 1 1/2"	70.1	-	27.2	6.0	1
RX746484	ABA4748YXN	RX746489	ABE4748Y		NPT 2"	NPT 2 1/2"	80.0	52.4	27.2	40.0	1
a.A. / o.R.	BBA4846YXN	a.A. / o.R.	BBE4846Y		NPT 2 1/2"	NPT 1 1/2"	80.0	-	40.5	6.5	1
RX746234	BBA4847YXN	RX746239	BBE4847Y		NPT 2 1/2"	NPT 2"	80.0	-	40.5	6.5	1
RX746754	ABA4849YXN	RX746759	ABE4849Y		NPT 2 1/2"	NPT 3"	105.0	68.2	40.5	41.0	1
RX746244	BBA4947YXN	RX746249	BBE4947Y		NPT 3"	NPT 2"	89.0	-	42.0	8.0	1
RX746504	BBA4948YXN	RX746509	BBE4948Y		NPT 3"	NPT 2 1/2"	89.0	-	42.0	8.0	1
RX744634	ABA4986YXN	RX744639	ABE4986Y		NPT 3"	NPT 3 1/2"	120.0	80.5	42.0	43.0	1
a.A. / o.R.	BBA8648YXN	a.A. / o.R.	BBE8648Y		NPT 3 1/2"	NPT 2 1/2"	110.0	-	43.2	8.5	1
a.A. / o.R.	BBA8649YXN	a.A. / o.R.	BBE8649Y		NPT 3 1/2"	NPT 3"	110.0	-	43.2	8.5	1
a.A. / o.R.	BBA8749YXN	a.A. / o.R.	BBE8749Y		NPT 4"	NPT 3"	120.0	-	44.5	10.0	1
a.A. / o.R.	BBA8786YXN	a.A. / o.R.	BBE8786Y		NPT 4"	NPT 3 1/2"	120.0	-	44.5	10.0	1

Weitere Größen/Gewindekombinationen auf Anfrage. / Further sizes/thread combination on request.
Weitere Produkte des Herstellers auf Anfrage. / Further products of the manufacturer on request.

