



REDUZIERUNG SECHSKANT / M x M / REDUCER HEXAGON / M x M

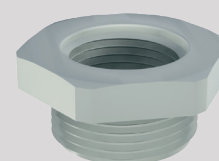
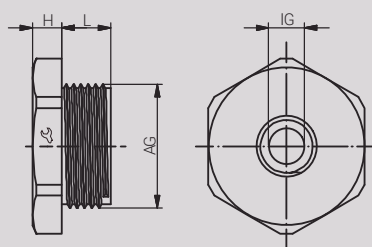
Material	Polyamid 6 GF 30
Einsatztemperatur	-30°C bis +100°C
Schutzart	Abhängig von der Kombination mit weiteren Komponenten.
Hinweis	Adapter, um Gewindeeingänge an Gehäusen und Maschinen zu verkleinern.

Material	Polyamide 6 GF 30
Operating Temperature	-30°C to +100°C
Protection Class	Depending on the combination with further components.
Note	Adapter to reduce entry threads on enclosures and machines.

Zulassungen / Approvals



Artikel Article	Gewinde Entry Thread			L (mm)	H (mm)	VPE PU
	AG / Male	IG / Female				
RAL7035						
11081612	M16x1.5	M12x1.5	24	8.0	4.0	100
11082012	M20x1.5	M12x1.5	24	8.0	4.0	100
11082016	M20x1.5	M16x1.5	24	8.0	4.0	100
11082512	M25x1.5	M12x1.5	32	8.0	6.0	100
11082516	M25x1.5	M16x1.5	32	8.0	6.0	100
11082520	M25x1.5	M20x1.5	32	8.0	6.0	100
11083212	M32x1.5	M12x1.5	36	10.0	5.9	50
11083216	M32x1.5	M16x1.5	36	10.0	6.0	50
11083220	M32x1.5	M20x1.5	36	10.0	6.1	50
11083225	M32x1.5	M25x1.5	36	10.0	5.9	50
11084016	M40x1.5	M16x1.5	46	12.0	7.0	25
11084020	M40x1.5	M20x1.5	46	12.0	7.0	25
11084025	M40x1.5	M25x1.5	46	12.0	7.0	25
11084032	M40x1.5	M32x1.5	46	12.0	7.0	25
11085020	M50x1.5	M20x1.5	55	14.0	7.0	5
11085025	M50x1.5	M25x1.5	55	14.0	7.0	5
11085032	M50x1.5	M32x1.5	55	14.0	7.0	5
11085040	M50x1.5	M40x1.5	55	14.0	7.0	5
11086325	M63x1.5	M25x1.5	68	12.0	6.0	25
11086332	M63x1.5	M32x1.5	65	15.0	7.0	5
11086340	M63x1.5	M40x1.5	65	15.0	7.0	5
11086350	M63x1.5	M50x1.5	65	15.0	7.0	5





Material Polyamid 6 GF 30

Einsatztemperatur -30°C bis +100°C

Schutzart Abhängig von der Kombination mit weiteren Komponenten.

Hinweis Adapter, um Gewindeeingänge an Gehäusen und Maschinen zu verkleinern.

Material Polyamide 6 GF 30

Operating Temperature -30°C to +100°C

Protection Class Depending on the combination with further components.

Note Adapter to reduce entry threads on enclosures and machines.

Zulassungen / Approvals



Artikel Article	Gewinde Entry Thread		Baupform Model		L (mm)	H (mm)	VPE PU
	AG / Male	IG / Female					
RAL7035							
11080907	PG 9	PG 7	B	19	8.0	12.5	100
11081107	PG 11	PG 7	A	22	8.0	6.0	100
11081109	PG 11	PG 9	B	22	8.0	14.5	100
11081307	PG 13.5	PG 7	A	24	9.0	6.0	100
11081309	PG 13.5	PG 9	A	24	9.0	6.0	100
11081311	PG 13.5	PG 11	B	24	9.0	15.0	100
11081609	PG 16	PG 9	A	27	10.0	6.0	100
11081611	PG 16	PG 11	B	27	10.0	18.0	100
11081613	PG 16	PG 13.5	B	27	10.0	18.0	100
11082111	PG 21	PG 11	A	32	11.0	5.0	100
11082113	PG 21	PG 13.5	A	32	11.0	5.0	100
11082116	PG 21	PG 16	A	32	11.0	5.0	100
11082913	PG 29	PG 13.5	A	40	11.0	6.0	50
11082916	PG 29	PG 16	A	40	11.0	6.0	50
11082921	PG 29	PG 21	A	40	11.0	6.0	50
11083616	PG 36	PG 16	A	53	14.0	7.0	50
11083621	PG 36	PG 21	A	50	13.0	6.0	50
11083629	PG 36	PG 29	A	50	18.0	6.0	50
11084221	PG 42	PG 21	A	55	16.0	6.0	25
11084229	PG 42	PG 29	A	55	18.0	6.0	25
11084236	PG 42	PG 36	A	55	18.0	6.0	25
11084829	PG 48	PG 29	A	60	18.0	6.0	25
11084836	PG 48	PG 36	A	60	14.0	6.0	25
11084842	PG 48	PG 42	A	60	17.0	6.0	25

