



## ERWEITERUNG RUND / M x M / ENLARGER ROUND / M x M

**Material** Messing, vernickelt

**Schutzart** Abhängig von der Kombination mit weiteren Komponenten.

**Hinweis** Adapter, um Gewindeeingänge an Gehäusen und Maschinen zu vergrößern.

**Material** Nickel Plated Brass

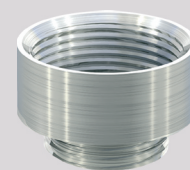
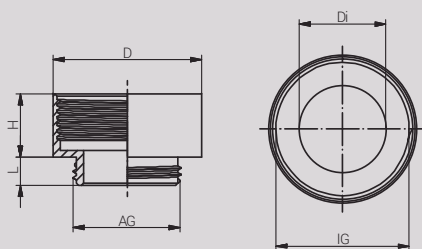
**Protection Class** Depending on the combination with further components.

**Note** Adapter to enlarge entry threads on enclosures and machines.

## Zulassungen / Approvals



Artikel Article	Gewinde Entry Thread		D (mm)	Di (mm)	L (mm)	H (mm)	VPE PU
	AG / Male	IG / Female					
62081216	M12x1.5	M16x1.5	18.0	8.0	5.0	10.0	100
62081620	M16x1.5	M20x1.5	22.0	12.0	6.0	11.5	100
62082025	M20x1.5	M25x1.5	27.0	15.0	6.5	12.5	50
62082532	M25x1.5	M32x1.5	34.0	20.0	6.5	14.5	50
62083240	M32x1.5	M40x1.5	42.0	26.0	7.0	16.0	50
62084050	M40x1.5	M50x1.5	53.0	35.0	9.0	22.0	10
62085063	M50x1.5	M63x1.5	66.0	44.0	9.0	22.0	10





**Material** Messing, vernickelt

**Schutzart** Abhängig von der Kombination mit weiteren Komponenten.

**Hinweis** Adapter, um Gewindeeingänge an Gehäusen und Maschinen zu vergrößern.

**Material** Nickel Plated Brass

**Protection Class** Depending on the combination with further components.

**Note** Adapter to enlarge entry threads on enclosures and machines.

Zulassungen / Approvals



Artikel Article	Gewinde Entry Thread		D (mm)	Di (mm)	L (mm)	H (mm)	VPE PU
	AG / Male	IG / Female					
62060709	PG 7	PG 9	17.0	10.0	5.0	10.0	100
62060911	PG 9	PG 11	20.0	12.5	6.0	10.5	100
62060913	PG 9	PG 13.5	22.0	12.5	6.0	11.5	100
62061113	PG 11	PG 13.5	22.0	15.0	6.0	11.5	100
62061116	PG 11	PG 16	24.0	15.0	6.0	12.5	100
62061316	PG 13.5	PG 16	24.0	17.0	6.5	12.5	100
62061321	PG 13.5	PG 21	30.0	17.0	6.5	14.5	50
62061621	PG 16	PG 21	30.0	18.5	6.5	14.5	50
62062129	PG 21	PG 29	39.0	24.0	7.0	16.0	50
62062936	PG 29	PG 36	50.0	32.0	8.0	19.5	25
62063642	PG 36	PG 42	57.0	42.0	9.0	22.0	10
62064248	PG 42	PG 48	64.0	48.0	10.0	23.0	10

