



| | |
|--------------------|--|
| Material | Messing, blank (weitere auf Anfrage) |
| Dichteinsatz | Chloropren (Silikon auf Anfrage) |
| Einsatztemperatur | -35°C bis +90°C (Silikon: -60°C bis +180°C) |
| Schutzart | IP66 / IP68 |
| ATEX-Kennzeichnung | Ex II 1D 2G Ex d IIC Gb / Ex e IIC Gb / Ex ta IIIC Da |
| Hinweis | Ex e/d-Kabelverschraubung für armierte Kabel. |

| | |
|-----------------------|--|
| Material | Natural Brass (Further on Request) |
| Sealing | Chloroprene (Silicone on Request) |
| Operating Temperature | -35°C to +90°C (Silicone: -60°C to +180°C) |
| Protection Class | IP66 / IP68 |
| ATEX Marking | Ex II 1D 2G Ex d IIC Gb / Ex e IIC Gb / Ex ta IIIC Da |
| Note | Ex e/d cable gland for armoured cable. |

Für besondere Bedingungen oder Einschränkungen siehe entsprechende Produktdokumentation.

For specific conditions or limitations please see relevant product documentation.

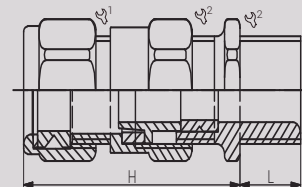
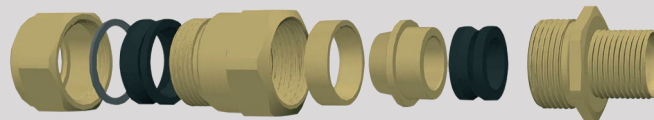
Zulassungen / Approvals



SIRA01ATEX1271X IECExSIR07.0097X TC RU C-GB.BH02.B.00693 GYJ11.1308X NCC 13.2186X 2627370 2021 31231 3000406

| Artikel-Nummer RST Article Code RST | Hersteller-Nummer Manufacturer Code | Hersteller Manufacturer | Größe Size | Gewinde Entry Thread | Klemmbereich Kabelmantel aussen Clamping Range Outer Sheath (mm) | | Klemmbereich Kabelmantel innen Clamping Range Inner Sheath (mm) | | Klemmbereich Armierung Clamping Range Armour (mm) | | 1/2 | L (mm) | H (mm) | VPE PU |
|---|--|----------------------------|---------------|-------------------------|--|------|---|------|---|---------|---------|-----------|------------|------------|
| | | | | | ≥ | ≤ | ≥ | ≤ | ≥ | ≤ | | | | |
| 77021120 | E1WBF 16/M20 | peppers | 16 | M20x1.5 | 8.4 | 13.5 | 3.5 | 8.4 | 0.90 | 0.90 | 24/24 | 16.0 | 58.0 | lose/loose |
| 77021121 | E1WBF 20s/M20 | | 20s | M20x1.5 | 12.9 | 16.0 | 8.0 | 11.7 | 0.90 | 1.25 | 24/24 | 16.0 | 58.0 | lose/loose |
| 77021122 | E1WBF 20/M20 | | 20 | M20x1.5 | 15.5 | 21.1 | 6.7 | 14.0 | 0.90 | 1.25 | 30/30 | 16.0 | 58.0 | lose/loose |
| 77021125 | E1WBF 25/M25 | | 25 | M25x1.5 | 20.3 | 27.4 | 13.0 | 20.0 | 1.25 | 1.60 | 38/38 | 16.0 | 58.0 | lose/loose |
| 77021132 | E1WBF 32/M32 | | 32 | M32x1.5 | 26.7 | 34.0 | 19.0 | 26.3 | 1.60 | 2.00 | 46/46 | 16.0 | 65.0 | lose/loose |
| 77021140 | E1WBF 40/M40 | | 40 | M40x1.5 | 33.0 | 40.6 | 25.0 | 32.2 | 1.60 | 2.00 | 55/55 | 16.0 | 72.0 | lose/loose |
| 77021150 | E1WBF 50s/M50 | | 50s | M50x1.5 | 39.4 | 46.7 | 31.5 | 38.2 | 2.00 | 2.50 | 65/65 | 16.0 | 73.0 | lose/loose |
| 77021151 | E1WBF 50/M50 | | 50 | M50x1.5 | 45.7 | 53.2 | 36.5 | 44.1 | 2.00 | 2.50 | 65/65 | 16.0 | 73.0 | lose/loose |
| 77021163 | E1WBF 63s/M63 | | 63s | M63x1.5 | 52.1 | 59.5 | 42.5 | 50.1 | 2.50 | 2.50 | 80/80 | 19.0 | 76.0 | lose/loose |
| 77021164 | E1WBF 63/M63 | | 63 | M63x1.5 | 58.4 | 65.8 | 49.5 | 56.0 | 2.50 | 2.50 | 80/80 | 19.0 | 76.0 | lose/loose |
| 77021175 | E1WBF 75s/M75 | | 75s | M75x1.5 | 64.8 | 72.2 | 54.5 | 62.0 | 2.50 | 2.50 | 90/90 | 19.0 | 82.0 | lose/loose |
| 77021176 | E1WBF 75/M75 | | 75 | M75x1.5 | 71.1 | 78.0 | 60.5 | 68.0 | 2.50 | 2.50 | 90/90 | 19.0 | 82.0 | lose/loose |
| 77021180 | E1WBF 80/M80 | | 80 | M80x2.0 | 77.0 | 84.0 | 62.2 | 72.0 | 3.15 | 3.15 | 105/104 | 25.0 | 110.0 | lose/loose |
| 77021181 | E1WBF 80H/M80 | | 80H | M80x2.0 | 79.6 | 90.0 | 62.2 | 72.0 | 3.15 | 3.15 | 105/104 | 25.0 | 110.0 | lose/loose |
| 77021185 | E1WBF 85/M85 | | 85 | M85x2.0 | 79.6 | 90.0 | 69.0 | 78.0 | 3.15 | 3.15 | 105/104 | 25.0 | 110.0 | lose/loose |
| 77021190 | E1WBF 90/M90 | | 90 | M90x2.0 | 88.0 | 96.0 | 74.0 | 84.0 | 3.15 | 3.15 | 114/114 | 25.0 | 110.0 | lose/loose |
| 77021191 | E1WBF 90H/M90 | 90H | M90x2.0 | 92.0 | 102.0 | 74.0 | 84.0 | 3.15 | 3.15 | 114/114 | 25.0 | 110.0 | lose/loose | |
| 77021100 | E1WBF 100/M100 | 100 | M100x2.0 | 92.0 | 102.0 | 82.0 | 90.0 | 3.15 | 3.15 | 114/114 | 25.0 | 110.0 | lose/loose | |

Weitere Produkte des Herstellers auf Anfrage. / Further products of the manufacturer on request.





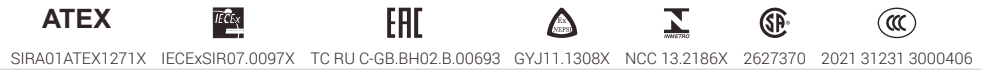
| | |
|--------------------|--|
| Material | Messing, blank (weitere auf Anfrage) |
| Dichteinsatz | Chloropren (Silikon auf Anfrage) |
| Einsatztemperatur | -35°C bis +90°C (Silikon: -60°C bis +180°C) |
| Schutzart | IP66 / IP68 |
| ATEX-Kennzeichnung | Ex II 1D 2G Ex d IIC Gb / Ex e IIC Gb / Ex ta IIIC Da |
| Hinweis | Ex e/d-Kabelverschraubung für armierte Kabel. |

| | |
|-----------------------|--|
| Material | Natural Brass (Further on Request) |
| Sealing | Chloroprene (Silicone on Request) |
| Operating Temperature | -35°C to +90°C (Silicone: -60°C to +180°C) |
| Protection Class | IP66 / IP68 |
| ATEX Marking | Ex II 1D 2G Ex d IIC Gb / Ex e IIC Gb / Ex ta IIIC Da |
| Note | Ex e/d cable gland for armoured cable. |

Für besondere Bedingungen oder Einschränkungen siehe entsprechende Produktdokumentation.

For specific conditions or limitations please see relevant product documentation.

Zulassungen / Approvals



| Artikel-Nummer RST Article Code RST | Hersteller-Nummer Manufacturer Code | Hersteller Manufacturer | Größe Size | Gewinde Entry Thread | Klemmbereich Kabelmantel aussen Clamping Range Outer Sheath (mm) | | Klemmbereich Kabelmantel innen Clamping Range Inner Sheath (mm) | | Klemmbereich Armierung Clamping Range Armour (mm) | | 1/2 | L (mm) | H (mm) | VPE PU |
|---|--|----------------------------|---------------|----------------------------|--|-------|---|------|---|------|---------|-----------|-----------|------------|
| | | | | | ≥ | ≤ | ≥ | ≤ | ≥ | ≤ | | | | |
| 77021301 | E1WBF 16/050NPT | peppers | 16 | NPT 1/2" | 8.4 | 13.5 | 3.5 | 8.4 | 0.90 | 0.90 | 24/24 | 16.0 | 58.0 | lose/loose |
| 77021302 | E1WBF 16/075NPT | | 16 | NPT 3/4" | 8.4 | 13.5 | 3.5 | 8.4 | 0.90 | 0.90 | 24/24 | 16.0 | 58.0 | lose/loose |
| 77021303 | E1WBF 20s/050NPT | | 20s | NPT 1/2" | 12.9 | 16.0 | 8.0 | 11.7 | 0.90 | 0.90 | 24/24 | 16.0 | 58.0 | lose/loose |
| 77021304 | E1WBF 20s/075NPT | | 20s | NPT 3/4" | 12.9 | 16.0 | 8.0 | 11.7 | 0.90 | 0.90 | 24/24 | 16.0 | 58.0 | lose/loose |
| 77021305 | E1WBF 20/050NPT | | 20 | NPT 1/2" | 15.5 | 21.1 | 6.7 | 14.0 | 0.90 | 0.90 | 30/30 | 16.0 | 58.0 | lose/loose |
| 77021306 | E1WBF 20/075NPT | | 20 | NPT 3/4" | 15.5 | 21.1 | 6.7 | 14.0 | 0.90 | 0.90 | 30/30 | 16.0 | 58.0 | lose/loose |
| 77021307 | E1WBF 25/075NPT | | 25 | NPT 3/4" | 20.3 | 27.4 | 13.0 | 20.0 | 1.25 | 1.25 | 38/38 | 16.0 | 58.0 | lose/loose |
| 77021308 | E1WBF 25/100NPT | | 25 | NPT 1" | 20.3 | 27.4 | 13.0 | 20.0 | 1.25 | 1.25 | 38/38 | 16.0 | 58.0 | lose/loose |
| 77021309 | E1WBF 32/100NPT | | 32 | NPT 1" | 26.7 | 34.0 | 19.0 | 26.3 | 1.60 | 1.60 | 46/46 | 16.0 | 65.0 | lose/loose |
| 77021310 | E1WBF 32/125NPT | | 32 | NPT 1 1/4" | 26.7 | 34.0 | 19.0 | 26.3 | 1.60 | 1.60 | 46/46 | 16.0 | 65.0 | lose/loose |
| 77021311 | E1WBF 40/125NPT | | 40 | NPT 1 1/4" | 33.0 | 40.6 | 25.0 | 32.2 | 1.60 | 1.60 | 55/55 | 16.0 | 72.0 | lose/loose |
| 77021312 | E1WBF 40/150NPT | | 40 | NPT 1 1/2" | 33.0 | 40.6 | 25.0 | 32.2 | 1.60 | 1.60 | 55/55 | 16.0 | 72.0 | lose/loose |
| 77021313 | E1WBF 50s/150NPT | | 50s | NPT 1 1/2" | 39.4 | 46.7 | 31.5 | 38.2 | 2.00 | 2.00 | 65/65 | 16.0 | 73.0 | lose/loose |
| 77021314 | E1WBF 50s/200NPT | | 50s | NPT 2" | 39.4 | 46.7 | 31.5 | 38.2 | 2.00 | 2.00 | 65/65 | 16.0 | 73.0 | lose/loose |
| 77021315 | E1WBF 50/200NPT | | 50 | NPT 2" | 45.7 | 53.2 | 36.5 | 44.1 | 2.00 | 2.00 | 65/65 | 16.0 | 73.0 | lose/loose |
| 77021316 | E1WBF 63s/200NPT | | 63s | NPT 2" | 52.1 | 59.5 | 42.5 | 50.1 | 2.50 | 2.50 | 80/80 | 19.0 | 76.0 | lose/loose |
| 77021317 | E1WBF 63s/250NPT | | 63s | NPT 2 1/2" | 52.1 | 59.5 | 42.5 | 50.1 | 2.50 | 2.50 | 80/80 | 19.0 | 76.0 | lose/loose |
| 77021318 | E1WBF 63/250NPT | | 63 | NPT 2 1/2" | 58.4 | 65.8 | 49.5 | 56.0 | 2.50 | 2.50 | 80/80 | 19.0 | 76.0 | lose/loose |
| 77021319 | E1WBF 75s/250NPT | | 75s | NPT 2 1/2" | 64.8 | 72.2 | 54.5 | 62.0 | 2.50 | 2.50 | 90/90 | 19.0 | 82.0 | lose/loose |
| 77021320 | E1WBF 75s/300NPT | | 75s | NPT 3" | 64.8 | 72.2 | 54.5 | 62.0 | 2.50 | 2.50 | 90/90 | 19.0 | 82.0 | lose/loose |
| 77021321 | E1WBF 75/300NPT | | 75 | NPT 3" | 71.1 | 78.0 | 60.5 | 68.0 | 2.50 | 2.50 | 90/90 | 19.0 | 82.0 | lose/loose |
| 77021322 | E1WBF 80/300NPT | | 80 | NPT 3" | 77.0 | 84.0 | 62.2 | 72.0 | 3.15 | 3.15 | 105/104 | 25.0 | 110.0 | lose/loose |
| 77021323 | E1WBF 80/350NPT | | 80 | NPT 3 1/2" | 77.0 | 84.0 | 62.2 | 72.0 | 3.15 | 3.15 | 105/104 | 25.0 | 110.0 | lose/loose |
| 77021324 | E1WBF 80H/300NPT | | 80H | NPT 3" | 79.6 | 90.0 | 62.2 | 72.0 | 3.15 | 3.15 | 105/104 | 25.0 | 110.0 | lose/loose |
| 77021325 | E1WBF 80H/350NPT | | 80H | NPT 3 1/2" | 79.6 | 90.0 | 62.2 | 72.0 | 3.15 | 3.15 | 105/104 | 25.0 | 110.0 | lose/loose |
| 77021326 | E1WBF 85/300NPT | | 85 | NPT 3" | 79.6 | 90.0 | 69.0 | 78.0 | 3.15 | 3.15 | 105/104 | 25.0 | 110.0 | lose/loose |
| 77021327 | E1WBF 85/350NPT | | 85 | NPT 3 1/2" | 79.6 | 90.0 | 69.0 | 78.0 | 3.15 | 3.15 | 105/104 | 25.0 | 110.0 | lose/loose |
| 77021328 | E1WBF 90/350NPT | | 90 | NPT 3 1/2" | 88.0 | 96.0 | 74.0 | 84.0 | 3.15 | 3.15 | 114/114 | 25.0 | 110.0 | lose/loose |
| 77021329 | E1WBF 90/400NPT | | 90 | NPT 4" | 88.0 | 96.0 | 74.0 | 84.0 | 3.15 | 3.15 | 114/114 | 25.0 | 110.0 | lose/loose |
| 77021330 | E1WBF 90H/350NPT | | 90H | NPT 3 1/2" | 92.0 | 102.0 | 74.0 | 84.0 | 3.15 | 3.15 | 114/114 | 25.0 | 110.0 | lose/loose |
| 77021331 | E1WBF 90H/400NPT | | 90H | NPT 4" | 92.0 | 102.0 | 74.0 | 84.0 | 3.15 | 3.15 | 114/114 | 25.0 | 110.0 | lose/loose |
| 77021332 | E1WBF 100/350NPT | | 100 | NPT 3 1/2" | 92.0 | 102.0 | 82.0 | 90.0 | 3.15 | 3.15 | 114/114 | 25.0 | 110.0 | lose/loose |
| 77021333 | E1WBF 100/400NPT | | 100 | NPT 4" | 92.0 | 102.0 | 82.0 | 90.0 | 3.15 | 3.15 | 114/114 | 25.0 | 110.0 | lose/loose |

Weitere Produkte des Herstellers auf Anfrage. / Further products of the manufacturer on request.

