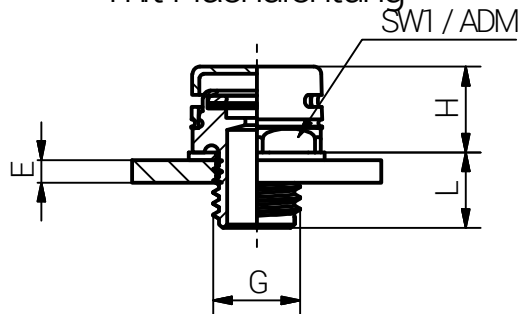


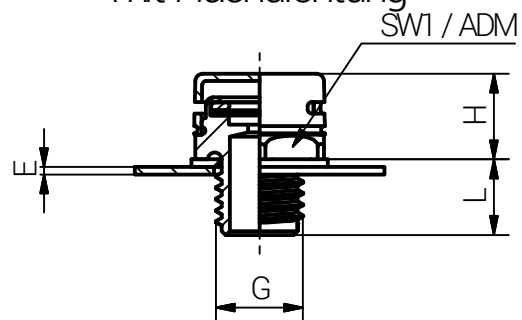
Montageanleitung

Gewindebohrung
mit Flachdichtung



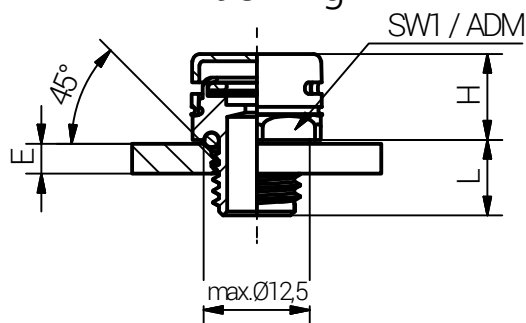
E= Min. 3,0 mm
Flachdichtung

Durchgangsbohrung
mit Flachdichtung



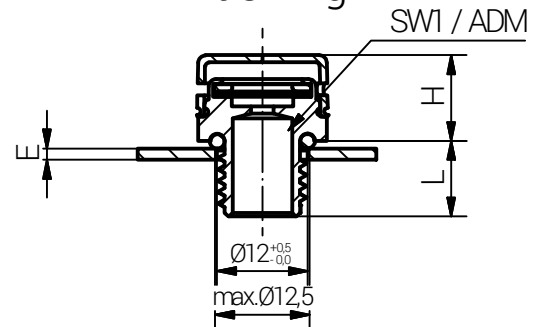
E= Max. 1,0 mm für 6,0 mm Gewindelänge
E= Max. 5,0 mm für 10,0 mm Gewindelänge

Gewindebohrung
mit O-Ring




E= Min. 3,0 mm
O-Ring

Durchgangsbohrung
mit O-Ring



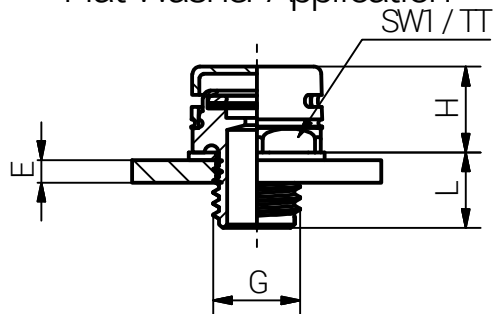
E= Max. 1,5 mm für 6,0 mm Gewindelänge
E= Max. 5,0 mm für 10,0 mm Gewindelänge

Schritt	Montageschritt (Die Installation sollte nur von einem qualifizierten Elektriker durchgeführt werden, der in der Installation von Kabelverschraubungen geschult ist.)							
1	Druckausgleichselement mit dem Anschlussgewinde am Gegenstück (z.B. Elektronikgehäuse) montieren und soweit anziehen, dass der O-Ring seine Funktion erfüllt. Zu festes Anziehen kann zu Beschädigungen führen. Das Druckausgleichselement sollte seitlich montiert werden.	Artikel	Membrantyp	Gewinde	SW1	L	H max.	Anzugsdrehmoment (Nm) ADM
		90000512HLD	H	M12x1,5	17	10,0	11,0	0,5
 <p>RST Rabe-System-Technik und Vertriebs-GmbH Otto-Lilienthal-Strasse 19 49134 Wallenhorst ☎ +49 5407 8766-0 ☎ +49 5407 8766-99 ✉ info@rst.eu</p>		Unless otherwise specified on the drawing: Metric Thread = EN 60423 PG Thread = DIN 40430 NPT Thread = ANSI B1.20.1 Tolerance: DIN ISO 2768-m All dimensions in mm.			Abusively use, in particular reproduction and dissemination to third parties is not permitted. You can be punished by civil law. Technical changes are reserved.			
				Date	Name			
			Draw.	14.04.2020	SL			
			Appr.	14.04.2020	KH			
			Norm					
			Scale:		1:1			
			Material:	Edelstahl				
				Drawing-Nr.:	90000512HLD_SZM_TD_German			1 of 1
A	Text	09.11.2020	SL					A4
Status	Modification	Date	Name	Z:\Inventor\Montageanleitung\Druckausgleichselemente\UL-DAE_Edelstahl_M,90000512HLD\DAE-02-1-BG-0001-90000512HLD_SZM_TD_German.idw				V9

Bitte beachten Sie, dass es sich bei der o.a. Darstellung nur um ein Maßbild handelt.

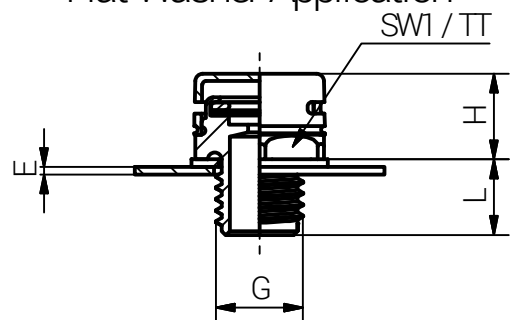
Mounting Instruction

Threaded Enclosure
Flat Washer Application



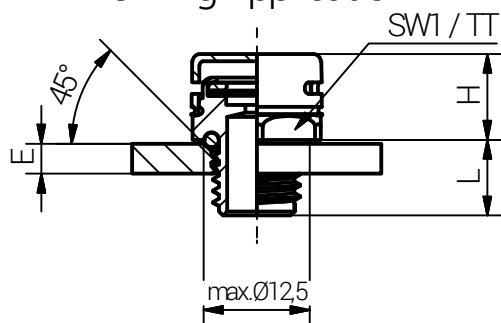
E= Min. 3,0 mm
Flat Washer

Non Threaded Enclosure
Flat Washer Application



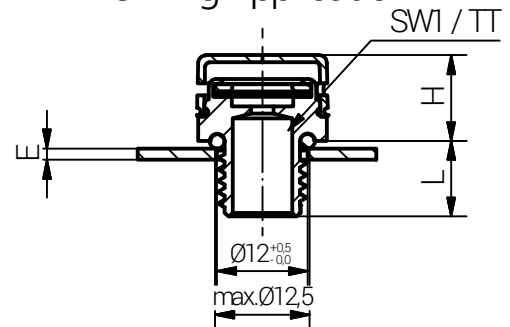
E= Max. 1,0 mm für 6,0 mm plug thread length
E= Max. 5,0 mm für 10,0 mm plug thread length

Threaded Enclosure
O-Ring Application



E= Min. 3,0 mm
O-Ring

Non Threaded Enclosure
O-Ring Application



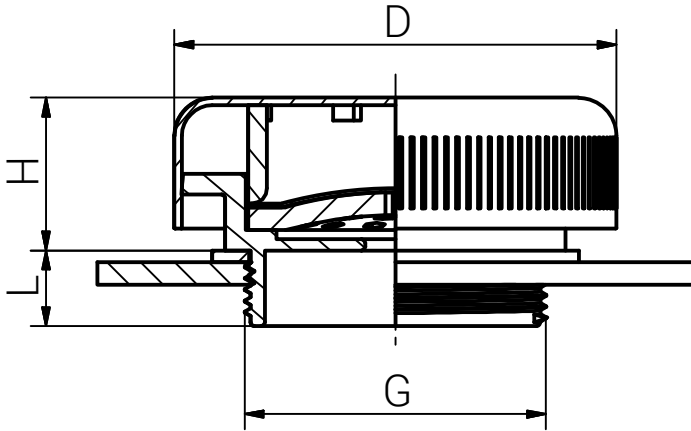
E= Max. 1,5 mm für 6,0 mm plug thread length
E= Max. 5,0 mm für 10,0 mm plug thread length

Step	Assembly Steps (The installation should only be done by a qualified electrician who are trained in the installation of cable glands.)							
1	Mount the pressure balance element with the connection thread on the counterpart (e.g. electronic enclosure) and tighten until the O-Ring fulfills its function. Over tightening may cause damage.	Article	Type of membrane	Thread	SWI (mm)	L (mm)	H max. (mm)	Tightening Torque (Nm) TT Tolerances ±0,1
The pressure equalization element should be mounted laterally.		90000512HLD	H	M12x1,5	17	10,0	11,0	0,5
RST Pabe-System-Technik und Vertriebs-GmbH Otto-Lilienthal-Strasse 19 49134 Wallenhorst ☎ +49 5407 8766-0 ☎ +49 5407 8766-99 ✉ info@rst.eu		Unless otherwise specified on the drawing: Metric Thread = EN 60423 PG Thread = DIN 40430 NPT Thread = ANSI B1.20.1 Tolerance: DIN ISO 2768-m All dimensions in mm.			Abusive use, in particular reproduction and dissemination to third parties is not permitted. You can be punished by civil law. Technical changes are reserved.			
		Date	Name		UL-Pressure Balance Elements M			
		Draw.	14.04.2020	SL				
		Appr.	14.04.2020	KH				
		Norm						
		Scale:	1:1					
		Material:			Drawing-Nr.:			1 of 1
		Stainless Steel			90000512HLD_SZM_TD_Englisch			
A	Text	09.11.2020	SL					A4
Status	Modification	Date	Name	Z:\inventor\Montageanleitung\Druckausgleichselemente\UL-DAE_Edelstahl\M,90000512HLD\DAE-02-1-BG-0001-90000512HLD_SZM_TD_Englisch.idw				V10

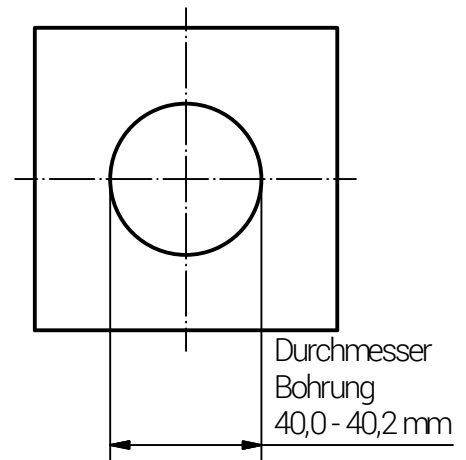
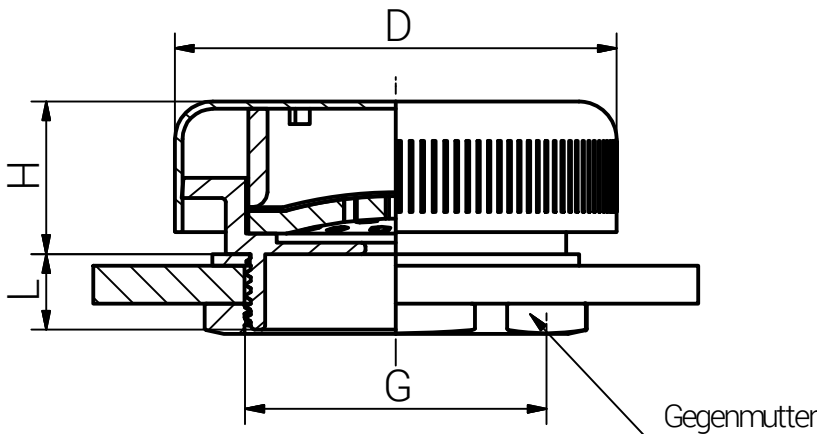
Please note that the above representation is just a dimension illustration.

Montageanleitung

Gewindebohrung mit Flachdichtung



Durchgangsbohrung mit Flachdichtung



Schritt	Montageschritt
1	Druckausgleichselement mit dem Anschlussgewinde am Gegenstück (z.B. Elektronikgehäuse) montieren und so weit anziehen, dass die Flachdichtung ihre Funktion erfüllt. Zu festes Anziehen kann zu Beschädigungen führen.

Das Druckausgleichselement sollte seitlich montiert werden.

Artikel	Membrantyp	Gewinde	D (mm)	L (mm)	H (mm)	Anzugsdrehmoment (Nm) ADM Toleranz ±0,5
90000540HLD	H	M40x1,5	58,0	10,0	20,7	5,0



RST Rabe-System-Technik und Vertriebs-GmbH
 Otto-Lilienthal-Strasse 19
 49134 Wallenhorst
 ☎ +49 5407 8766-0
 📠 +49 5407 8766-99
 ✉ info@rst.eu

Unless otherwise specified on the drawing:
 Metric Thread = EN 60423
 PG Thread = DIN 40430
 NPT Thread = ANSI B1.20.1
 Tolerance: DIN ISO 2768-m
 All dimensions in mm

Abusively use, in particular reproduction and dissemination to third parties is not permitted. You can be punished by civil law. Technical changes are reserved.

				Date	Name
				09.06.2020	SL
				09.06.2020	KH
					1:1/1:2
					Scale:
					Material:
					Edelstahl 1.4305
A	Text	09.11.2020	SL		
Status	Modification	Date	Name	Z:\inventor\Montageanleitung\Druckausgleichselemente\UL-DAE_Edelstahl\M_90000540HLD\DAE-01-1-BG-0001-90000540HLD_SZM_TD_German.idw	

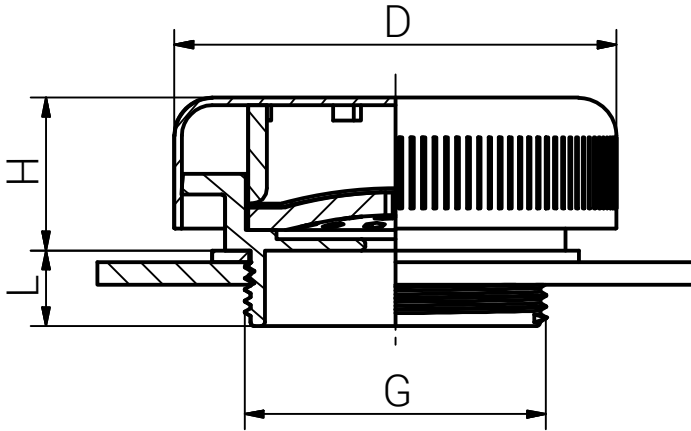
UL-Druckausgleichselement Edelstahl M40x1,5

Drawing-Nr.: 90000540HLD_SZM_TD_German

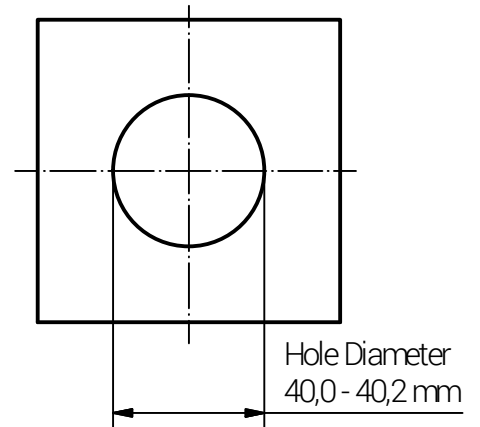
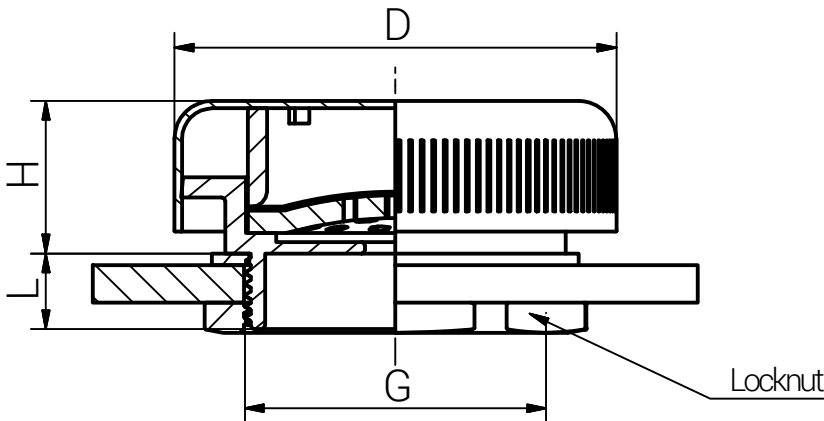
1 of 1
A4
V5

Mounting Instruction

Threaded Enclosure Flat Washer Application



Non Threaded Enclosure Flat Washer Application



Step	Assembly Steps
1	Mount the pressure balance element with the connection thread on the counterpart (e.g. electronic enclosure) and tighten until the washer fulfills its function. Over tightening may cause damage.

The pressure equalization element should be mounted laterally.

Article	Type of membrane	Thread	D (mm)	L (mm)	H (mm)	Tightening Torque (Nm) TT
90000540HLD	H	M40x1,5	58,0	10,0	20,7	5,0



RST Rabe-System-Technik und Vertriebs-GmbH
Otto-Lilienthal-Strasse 19
49134 Wallenhorst
☎ +49 5407 8766-0
☎ +49 5407 8766-99
✉ info@rst.eu

Unless otherwise specified on the drawing:
Metric Thread = EN 60423
PG Thread = DIN 40430
NPT Thread = ANSI B1.20.1
Tolerance: DIN ISO 2768-m
All dimensions in mm

Abusive use, in particular reproduction and dissemination to third parties is not permitted. You can be punished by civil law. Technical changes are reserved.

		Date	Name
	Draw.	09.06.2020	SL
	Appr.	09.06.2020	KH
	Norm		1:1/1:2
	Scale:		
	Material:	Stainless Steel 303	
A	Text	09.11.2020	SL
Status	Modification	Date	Name

UL-Pressure Balance Elements Stainless Steel M 40x1,5

Drawing-Nr.:	90000540HLD_SZM_TD_Englisch	1 of 1
		A4
		V6